

STATUTORY RIGHT OF WAY PLAN

PLAN EPP95566

Over Part of Parcel A District Lots 1430, 8172, 8173, 8176 and 8180 Cariboo District Plan PGP43619

Pursuant to Section 113 of the Land Title Act.

Integrated Survey Area No. 39 Prince George, BC NAD83 (CSRS) 4.0.0.BC.1

BCGS 936.087

SCALE:



The intended plot size of this plan is 864mm in width by 560mm in height (D size) when plotted at a scale of 1:1250.

Grid bearings are derived from observations between geodetic control monuments 85H1127 and 85H1130 and are referred to the central meridian of UTM Zone 10 North.

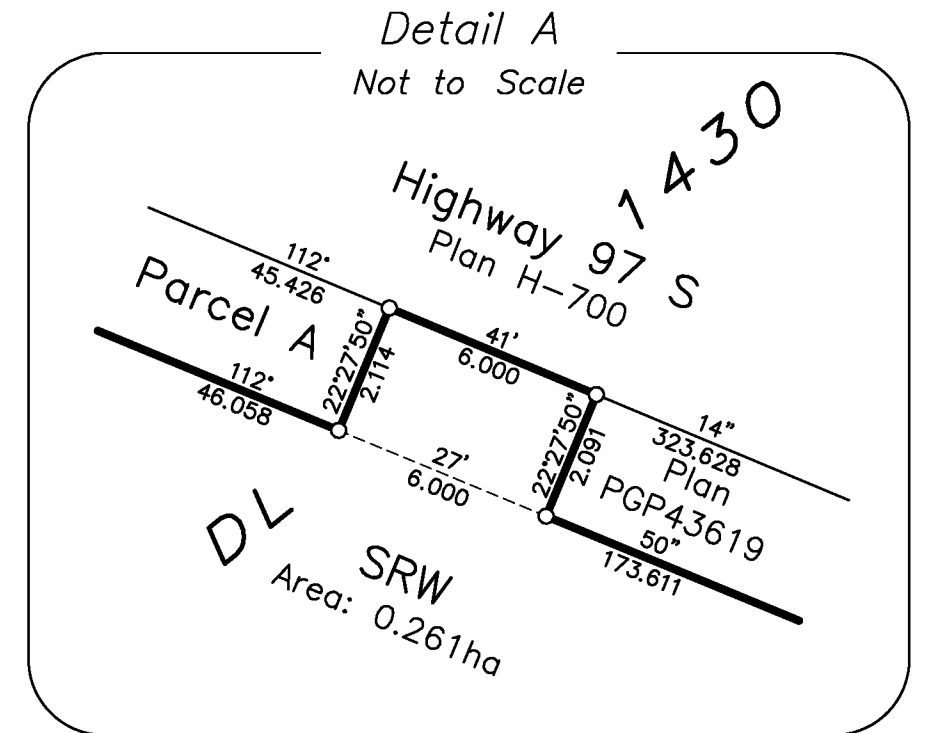
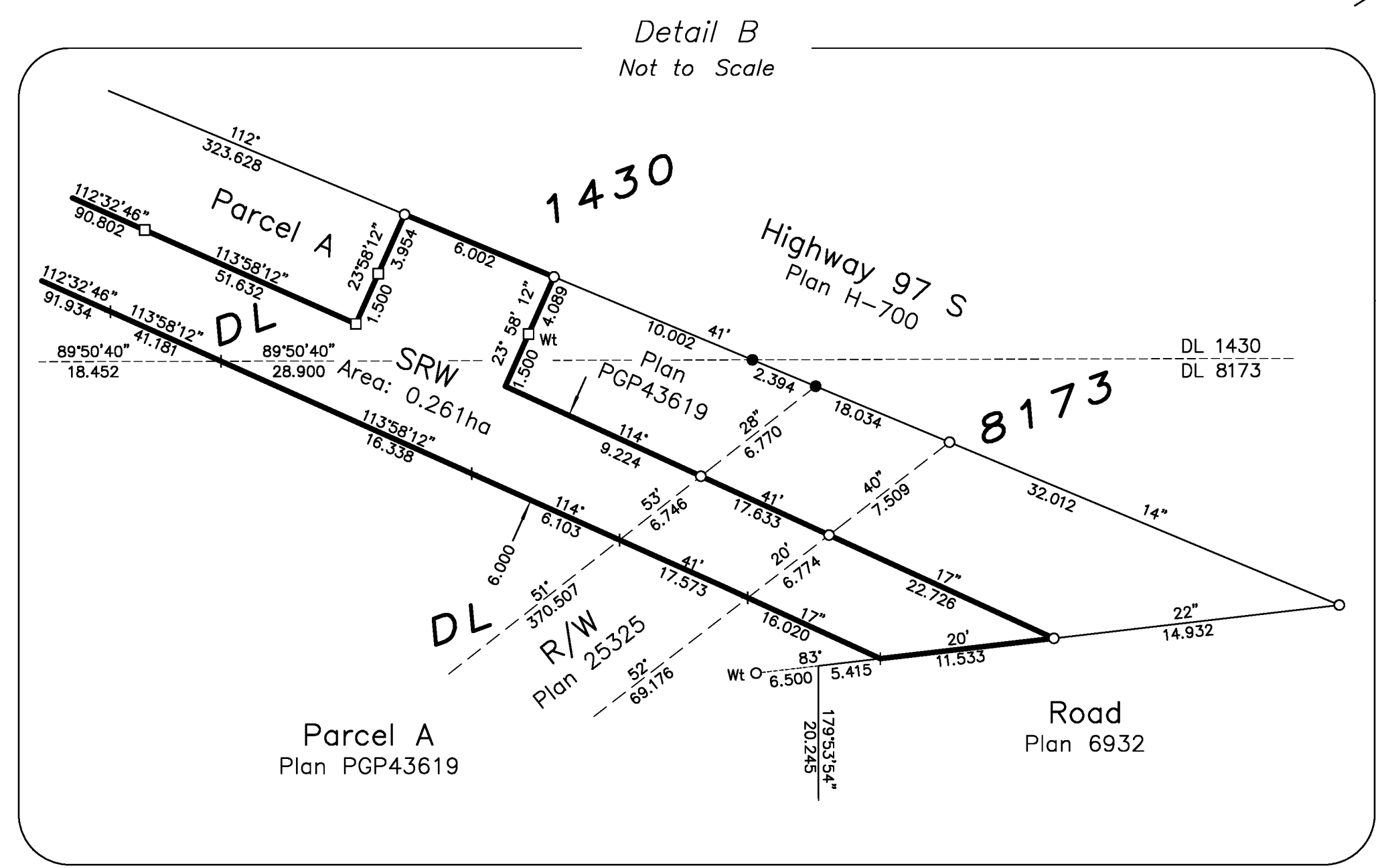
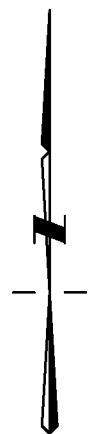
The UTM coordinates and estimated absolute accuracy achieved are derived from the MASCOB published coordinates and standard deviations for geodetic control monuments 85H1127 and 85H1130.

This plan shows horizontal ground-level distances, unless otherwise specified. To compute grid distances, multiply ground-level distances by the average combined factor of 0.9995126. The average combined factor has been determined based on geodetic control monument 85H1127.

This plan shows one or more witness posts which are not set on the true corner(s).

LEGEND:

| Symbols Found | Placed | Description                 |
|---------------|--------|-----------------------------|
| ●             | ○      | Control Monument            |
| ●             | ○      | Standard Iron Post          |
| ●             | ○      | Standard Concrete Post      |
| ●             | ○      | Lead Plug                   |
| +             |        | Unmarked measured point     |
| EAA           |        | Estimated absolute accuracy |



| UTM Zone 10 Coordinates (Published) |            |           |      |
|-------------------------------------|------------|-----------|------|
| NAD83 (CSRS) 4.0.0.BC.1             |            |           |      |
| Station                             | Northing   | Easting   | EAA  |
| 85H1127                             | 5972223.13 | 514343.20 | 0.10 |
| 85H1130                             | 5971802.05 | 514492.75 | 0.10 |

**HBH** LAND SURVEYING INC.  
 Prince George 203-1300 1st Ave. 250.640.2287  
 Smithers 3750 1st Ave. PO Box 536 250.847.3808  
 www.HBHLandSurveying.com

HBH File No. CPG1904-SRW

This plan lies within the Regional District of Fraser-Fort George.  
 The field survey represented by this plan was completed on the 19th day of February, 2020.  
 Darren Kent, BCLS 904