

REFERENCE PLAN OF RIGHT OF WAY WITHIN PART OF LOTS 1, 2 AND 3, DL 1599, CARIBOO DISTRICT, PLAN EPP9554.

PLAN EPP9555

PURSUANT TO SECTION 113 OF THE LAND TITLE ACT.

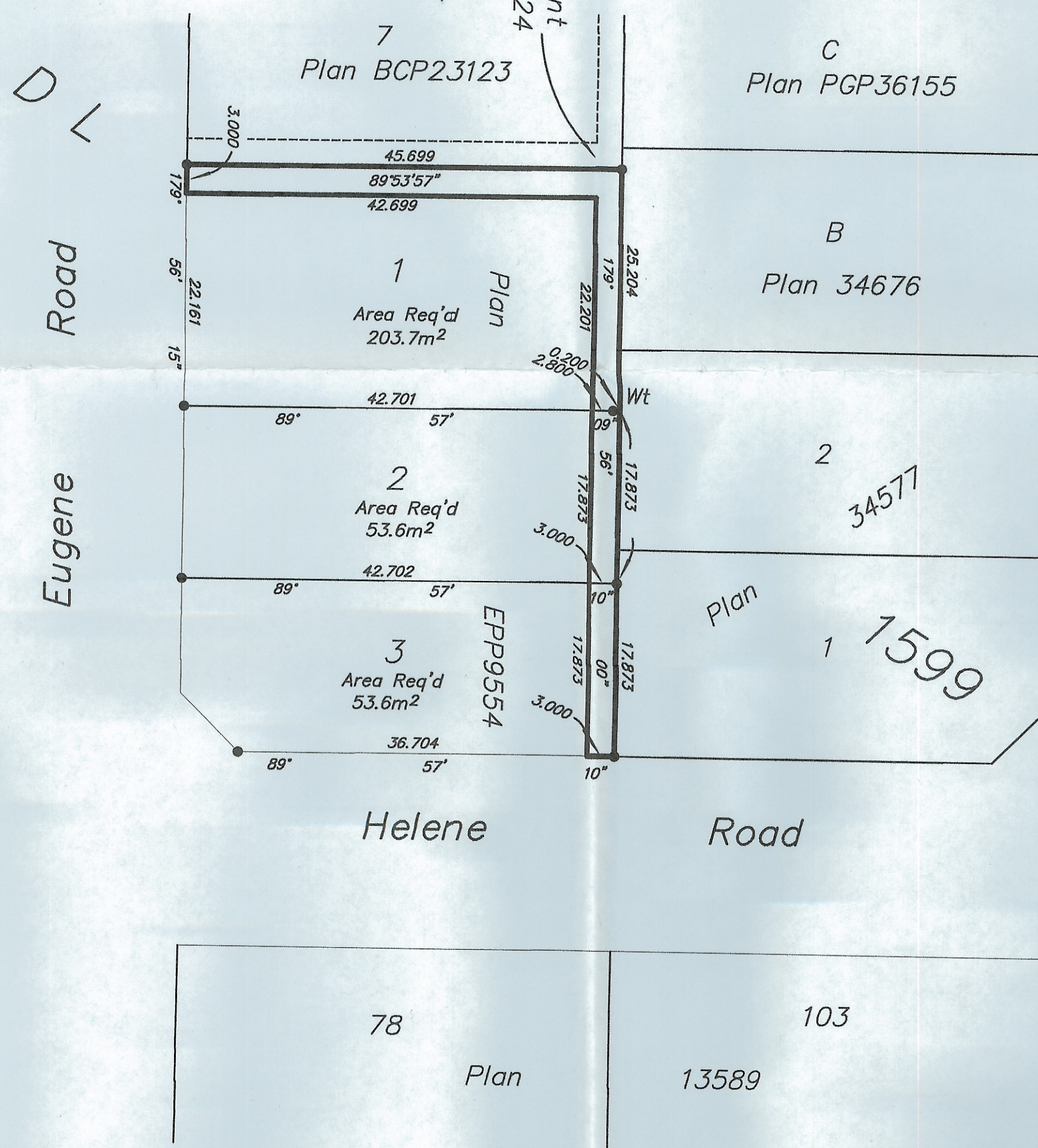
BCGS 93G.086

THE INTENDED PLOT SIZE OF THIS PLAN IS 560mm IN WIDTH BY
432mm IN HEIGHT (C SIZE) WHEN PLOTTED AT A SCALE OF 1:500

Scale: 1 : 500 (Distances are in metres)

Grid bearings are derived from previously
Integrated Plan EPP**LEGEND**

- Standard Iron Post Found
- Standard Iron Post Placed

This plan shows one or more witness posts which are set along
the production of the property boundary unless otherwise noted.

BOOK OF REFERENCE	
DESCRIPTION	AREA
Lot 1, Plan EPP9554	203.7m ²
Lot 2, Plan EPP9554	53.6m ²
Lot 3, Plan EPP9554	53.6m ²

The field survey represented by this plan was completed by
Dale Keown, BCLS on the 15th day of October, 2010.THIS PLAN LIES WITHIN THE REGIONAL
DISTRICT OF FRASER - FORT GEORGE.

McElhanney
McElhanney Associates
Land Surveying Ltd.
Prince George, B.C.

Ph: (250) 561-2229 Fax: (250) 563-1941

DL - 1599

File No. - 5844 - E

NOVEMBER 2, 2010