

**PLAN EPP95511**

**Statutory Right of Way Plan over part of Lot 1, District Lot 745, Cariboo District, Plan EPP95510.**

Pursuant to Section 113 of the Land Title Act.

Integrated survey area No. 39 Prince George, BC, NAD83 (CSRS) 4.0.0.BC.1

BCGS 93G.087



The intended plot size of this plan is 432mm in width by 559mm in height (C size) when plotted at a scale of 1:750.

All distances are in metres and decimals thereof.

Grid bearings are derived from observations between geodetic control monuments 939447(86H1740) and 294447(86H1733).

The UTM coordinates and estimated horizontal positional accuracy achieved have been derived from mascot published coordinates and standard deviations for geodetic control monuments 939447(86H1740) and 294447(86H1733).

This plan shows horizontal ground-level distances unless otherwise specified. To compute grid distances, multiply ground-level distances by the average combined factor of 0.9995130 which has been derived from control monument 939447(86H1740).

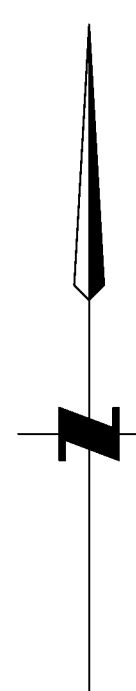
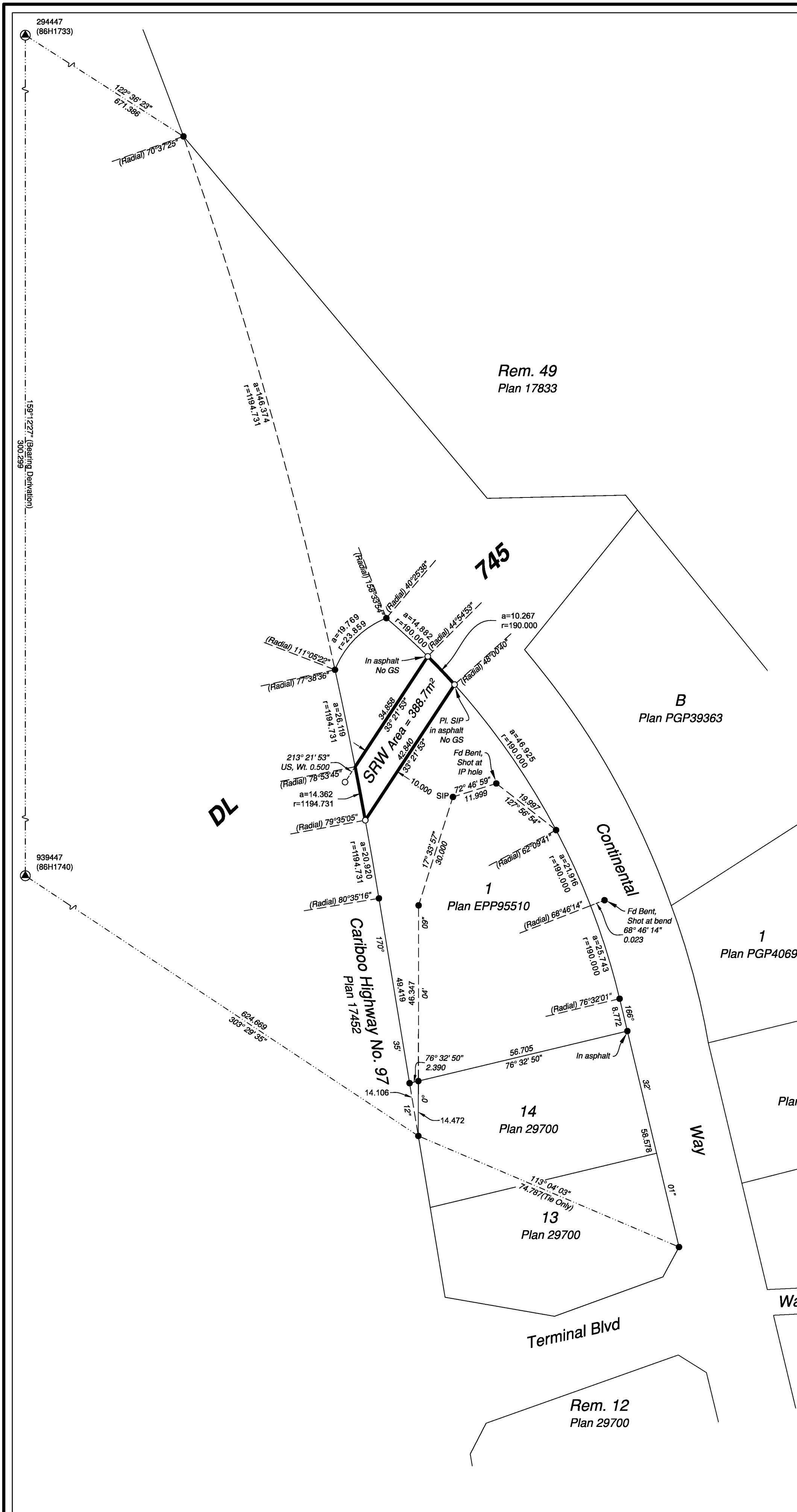
Note: This plan shows one or more witness posts which are not set on the true corner(s). Some posts are exaggerated for clarity.

Wooden guard stakes set at every placed iron post unless otherwise noted.

**Legend**

Found	Placed	Description
⊙	⊙	Control Monument
●	○	Standard Iron Post
●	●	Short Iron Post
■	■	Wooden Guard Stake
US	US	Unsuitable to Post
CSF	CSF	Combined Scale Factor
AHA	AHA	Absolute Horizontal Accuracy

Georeferencing Positions				
UTM Coordinates, Zone 10, NAD 83 (CSRS), 4.0.0.BC.1				
Station	Northing	Easting	EAHA	CSF
939447	5970239.09	516833.60	0.05	0.9995130
294447	5970519.69	516727.05	0.05	0.9995130



The field survey represented by this plan was completed on the 26th day of August, 2019.

Scott Maguire, BCLS 903

This plan lies within the Regional District of Fraser-Fort George

File: 19062-SRW

**KOEHLER LAND SURVEYING INC.**  
1698 Lyon Street South  
Prince George, BC V2N 1T3  
Tel: (250) 614-9703