

PLAN EPP95509

**Reference Plan to Accompany
By-law No. 9047,
(City of Prince George) to close
portions of Road shown dedicated
on Plans PGP35583, PGP39051,
and PGP39049, District Lot 745,
Cariboo District.**

Pursuant to Section 120 of the Land Title Act and Section 40 of the Community Charter.

Integrated survey area No. 39 Prince George, BC,
NAD83 (CSRS) 4.0.0.BC.1

BCGS 93G.087



The intended plot size of this plan is 432mm in width by 559mm in height (C size) when plotted at a scale of 1:750.

All distances are in metres and decimals thereof.

Grid bearings are derived from observations between geodetic control monuments 939447(86H1740) and 294447(86H1733).

The UTM coordinates and estimated horizontal positional accuracy achieved have been derived from mascot published coordinates and standard deviations for geodetic control monuments 939447(86H1740) and 294447(86H1733).

This plan shows horizontal ground-level distances unless otherwise specified. To compute grid distances, multiply ground-level distances by the average combined factor of 0.9995130 which has been derived from control monument 939447(86H1740).

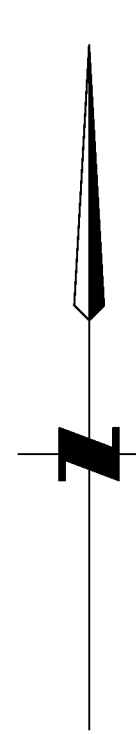
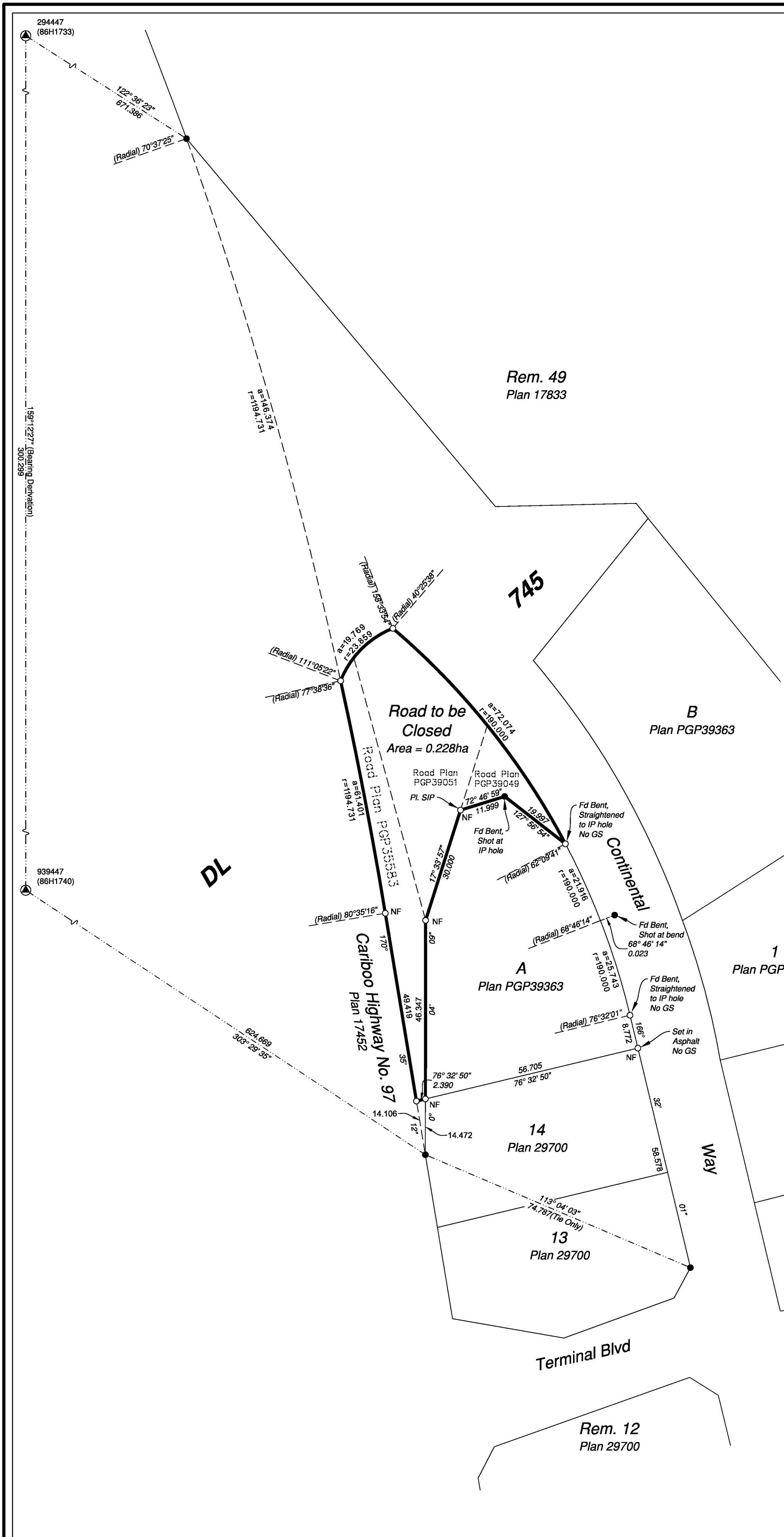
Note:
Some posts are exaggerated for clarity.

Wooden guard stakes set at all placed iron posts unless otherwise noted.

Legend

Symbols		Description
Found	Placed	
		Control Monument
		Standard Iron Post
		Short Iron Post
		Wooden Guard Stake
		Combined Scale Factor
		Absolute Horizontal Accuracy

Georeferencing Positions				
UTM Coordinates, Zone 10, NAD 83 (CSRS), 4.0.0.BC.1				
Station	Northing	Easting	EAHA	CSF
939447	5970239.09	516833.60	0.05	0.9995130
294447	5970519.69	516727.05	0.05	0.9995130



The field survey represented by this plan was completed on the 26th day of August, 2019.
Scott Maguire, BCLS 903

This plan lies within the Regional District of Fraser-Fort George

File: 19062-RC
KOEHLER LAND SURVEYING INC.
 1698 Lyon Street South
 Prince George, BC V2N 1T3
 Tel: (250) 614-9703