

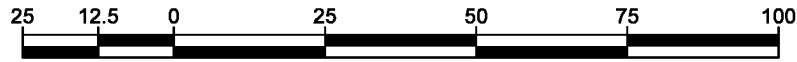
REFERENCE PLAN OF CONSOLIDATION OF CLOSED ROAD, PLANS EPP95003 AND 30729, AND LOT A, PLAN 16655, ALL IN DISTRICT LOT 823, CARIBOO DISTRICT.

PLAN EPP95004

PURSUANT TO SECTION 100(1)(b) OF THE LAND TITLE ACT.

THIS PLAN LIES WITHIN INTEGRATED SURVEY AREA
No. 39 PRINCE GEORGE, BC, NAD83 (CSRS) 4.0.0.BC.1

BCGS 93G.097



THE INTENDED PLOT SIZE OF THIS PLAN IS 560mm IN WIDTH BY 432mm IN HEIGHT (C SIZE) WHEN PLOTTED AT A SCALE OF 1:1250.

ALL DISTANCES ARE IN METRES AND DECIMALS THEREOF.

GRID BEARINGS ARE DERIVED FROM OBSERVATIONS TO GEODETIC CONTROL MONUMENTS 86H1596 AND 86H1591.

THE UTM COORDINATES AND ESTIMATED ABSOLUTE ACCURACY ACHIEVED HAVE BEEN DERIVED FROM MASCOT PUBLISHED COORDINATES AND STANDARD DEVIATIONS FOR GEODETIC CONTROL MONUMENT 86H1591.

THIS PLAN SHOWS HORIZONTAL GROUND-LEVEL DISTANCES UNLESS OTHERWISE SPECIFIED. TO COMPUTE GRID DISTANCES, MULTIPLY GROUND-LEVEL DISTANCES BY THE COMBINED FACTOR OF 0.9995168 WHICH HAS BEEN DERIVED FROM GEODETIC CONTROL MONUMENT 86H1591.

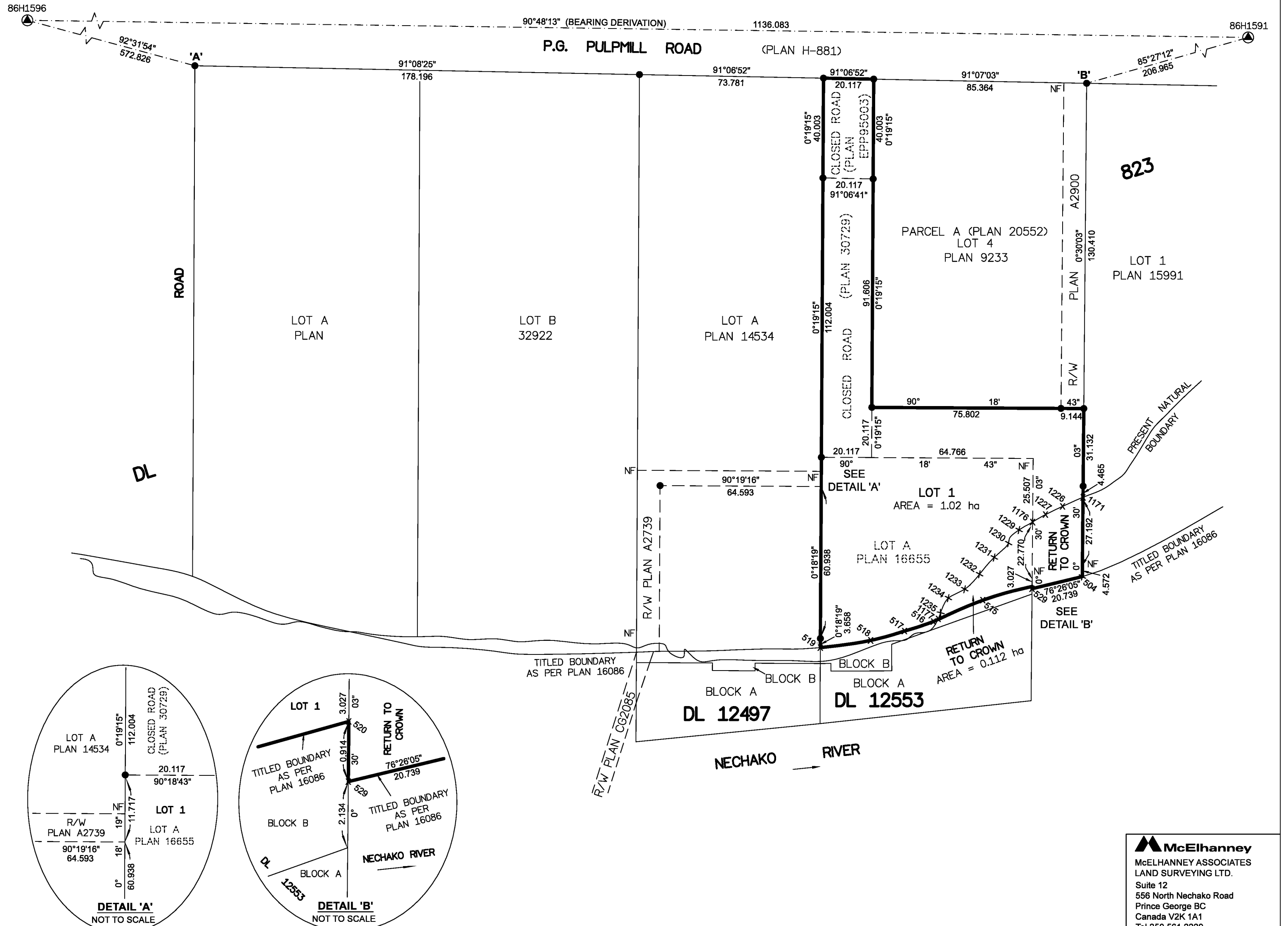
LEGEND

SYMBOLS	DESCRIPTION
FOUND PLACED	
	CONTROL MONUMENT
	STANDARD IRON POST
CSF	COMBINED SCALE FACTOR
EAA	ESTIMATED ABSOLUTE ACCURACY

GEOREFERENCING POSITIONS UTM COORDINATES, ZONE 10, NAD 83 (CSRS), 4.0.0.BC.1				
STATION	NORTHING	EASTING	EAA	CSF
Fd. IP 'A'	5975712.48	517379.11	0.10	0.9995161
Fd. IP 'B'	5975705.44	517736.33	0.10	0.9995168

PRESENT NATURAL BOUNDARY AND TITLED BOUNDARY
NECHAKO RIVER
UTM COORDINATES, ZONE 10,
NAD 83 (CSRS), 4.0.0.BC.1

POINT	NORTHING	EASTING
504	5975507.77	517734.60
515	5975498.30	517694.70
516	5975489.73	517674.93
517	5975485.93	517663.35
518	5975482.18	517649.79
519	5975479.29	517629.66
520	5975503.82	517714.46
529	5975502.91	517714.45
1171	5975539.52	517734.88
1176	5975529.61	517714.89
1177	5975490.55	517676.72
1226	5975535.87	517726.69
1227	5975532.62	517719.85
1229	5975526.44	517709.25
1230	5975521.16	517705.05
1231	5975515.38	517699.22
1232	5975508.69	517693.41
1233	5975502.68	517687.46
1234	5975499.14	517680.91
1235	5975493.21	517677.84



THE FIELD SURVEY REPRESENTED BY THIS PLAN WAS COMPLETED
ON THE 16th DAY OF AUGUST, 2019
SHAUNA C. GOERTZEN, BCLS 798

THIS PLAN LIES WITHIN THE REGIONAL DISTRICT OF FRASER-FORT GEORGE.

McElhanney
McELHANNEY ASSOCIATES
LAND SURVEYING LTD.
Suite 12
556 North Nechako Road
Prince George BC
Canada V2K 1A1
Tel 250 561 2229

File No. 2341-6714-CON