

# REFERENCE PLAN TO ACCOMPANY BY-LAW NUMBER 9056 (PRINCE GEORGE) TO CLOSE A PORTION OF ROAD SHOWN DEDICATED ON PLAN 14534, DISTRICT LOT 823, CARIBOO DISTRICT.

PLAN EPP95003

PURSUANT TO SECTION 120 OF THE LAND TITLE ACT AND SECTION 40 OF THE COMMUNITY CHARTER

THIS PLAN LIES WITHIN INTEGRATED SURVEY AREA  
No. 39 PRINCE GEORGE, BC, NAD83 (CSRS) 4.0.0.BC.1

BCGS 93G.097



THE INTENDED PLOT SIZE OF THIS PLAN IS 560mm IN WIDTH BY 432mm IN HEIGHT (C SIZE) WHEN PLOTTED AT A SCALE OF 1:1250.

ALL DISTANCES ARE IN METRES AND DECIMALS THEREOF.

GRID BEARINGS ARE DERIVED FROM OBSERVATIONS TO GEODETIC CONTROL MONUMENTS 86H1596 AND 86H1591.

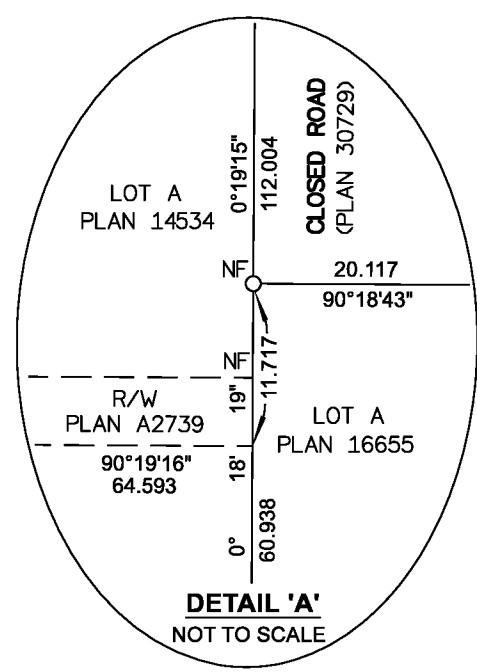
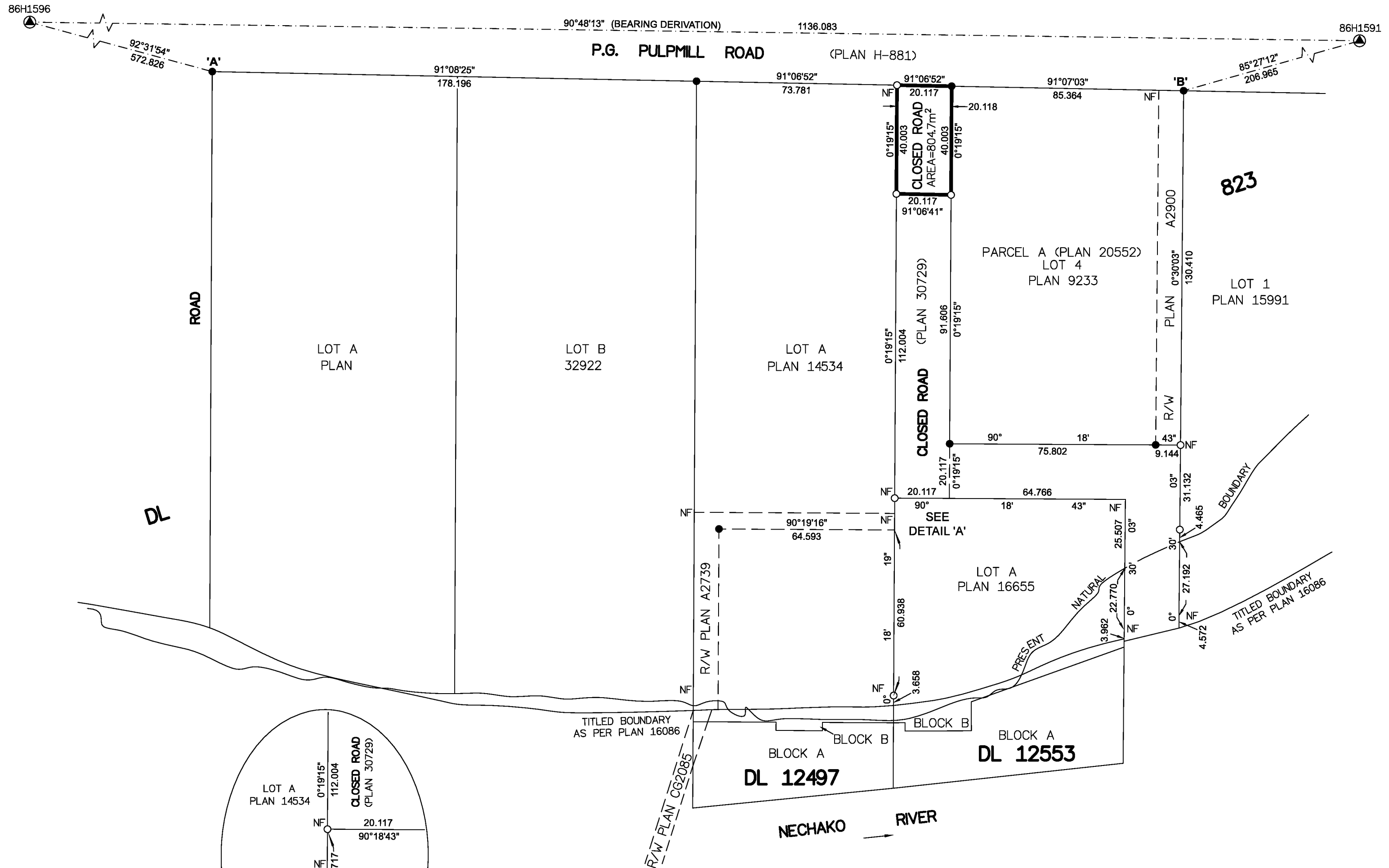
THE UTM COORDINATES AND ESTIMATED ABSOLUTE ACCURACY ACHIEVED HAVE BEEN DERIVED FROM MASCOT PUBLISHED COORDINATES AND STANDARD DEVIATIONS FOR GEODETIC CONTROL MONUMENT 86H1591.

THIS PLAN SHOWS HORIZONTAL GROUND-LEVEL DISTANCES UNLESS OTHERWISE SPECIFIED. TO COMPUTE GRID DISTANCES, MULTIPLY GROUND-LEVEL DISTANCES BY THE COMBINED FACTOR OF 0.9995168 WHICH HAS BEEN DERIVED FROM GEODETIC CONTROL MONUMENT 86H1591.

## LEGEND

SYMBOLS		DESCRIPTION
FOUND	PLACED	
		CONTROL MONUMENT
		STANDARD IRON POST
	CSF	COMBINED SCALE FACTOR
	EAA	ESTIMATED ABSOLUTE ACCURACY

GEOREFERENCING POSITIONS UTM COORDINATES, ZONE 10, NAD 83 (CSRS), 4.0.0.BC.1				
STATION	NORTHING	EASTING	EAA	CSF
Fd. IP 'A'	5975712.48	517379.11	0.10	0.9995161
Fd. IP 'B'	5975705.44	517736.33	0.10	0.9995168



THE FIELD SURVEY REPRESENTED BY THIS PLAN WAS COMPLETED  
ON THE 16th DAY OF AUGUST, 2019  
SHAUNA C. GOERTZEN, BCLS 798

THIS PLAN LIES WITHIN THE REGIONAL DISTRICT OF FRASER-FORT GEORGE.

**McElhanney**  
McELHANNEY ASSOCIATES  
LAND SURVEYING LTD.  
Suite 12  
556 North Nechako Road  
Prince George BC  
Canada V2K 1A1  
Tel 250 561 2229

File No. 2341-6714-RC