

**REFERENCE PLAN EASEMENT OVER PARTS OF STRATA LOTS 2 TO 17, INCLUSIVE, DISTRICT LOT 2003, CARIBOO DISTRICT, PLAN EPS4104.**

PURSUANT TO SECTION 99(1)(e) OF THE LAND TITLE ACT. FOR EASEMENT PURPOSES

THIS PLAN LIES WITHIN INTEGRATED SURVEY AREA No. 39 PRINCE GEORGE, BC, NAD83 (CSRS) 4.0.0.BC.1

BCGS 93G.087



THE INTENDED PLOT SIZE OF THIS PLAN IS 864mm IN WIDTH BY 560mm IN HEIGHT (D SIZE) WHEN PLOTTED AT A SCALE OF 1:250.

ALL DISTANCES ARE IN METRES AND DECIMALS THEREOF.

GRID BEARINGS ARE DERIVED FROM PLAN EPS4104.

THE UTM COORDINATES AND ESTIMATED ABSOLUTE ACCURACY ACHIEVED HAVE BEEN DERIVED FROM PLAN EPS4104.

THIS PLAN SHOWS HORIZONTAL GROUND-LEVEL DISTANCES UNLESS OTHERWISE SPECIFIED. TO COMPUTE GRID DISTANCES, MULTIPLY GROUND-LEVEL DISTANCES BY THE AVERAGE COMBINED FACTOR OF 0.9994932 WHICH HAS BEEN DERIVED FROM GEODETIC CONTROL MONUMENT 86H1670.

NOTE: THIS PLAN SHOWS ONE OR MORE WITNESS POSTS WHICH ARE NOT SET ON THE TRUE CORNER(S).

SOME POSTS AND LINES ARE EXAGGERATED FOR CLARITY.

**LEGEND**

SYMBOLS		DESCRIPTION
●	○	FOUND PLACED STANDARD IRON POST
⊙		COMMON PROPERTY
CSF		COMBINED SCALE FACTOR
EAA		ESTIMATED ABSOLUTE ACCURACY

GEOREFERENCING POSITIONS UTM COORDINATES, ZONE 10, NAD 83 (CSRS) 4.0.0.BC.1				
STATION	NORTHING	EASTING	EAA	CSF
Fd.IPA'	5968299.80	513388.61	0.14	0.9994932
Fd.IPB'	5968178.17	513388.90	0.14	0.9994932

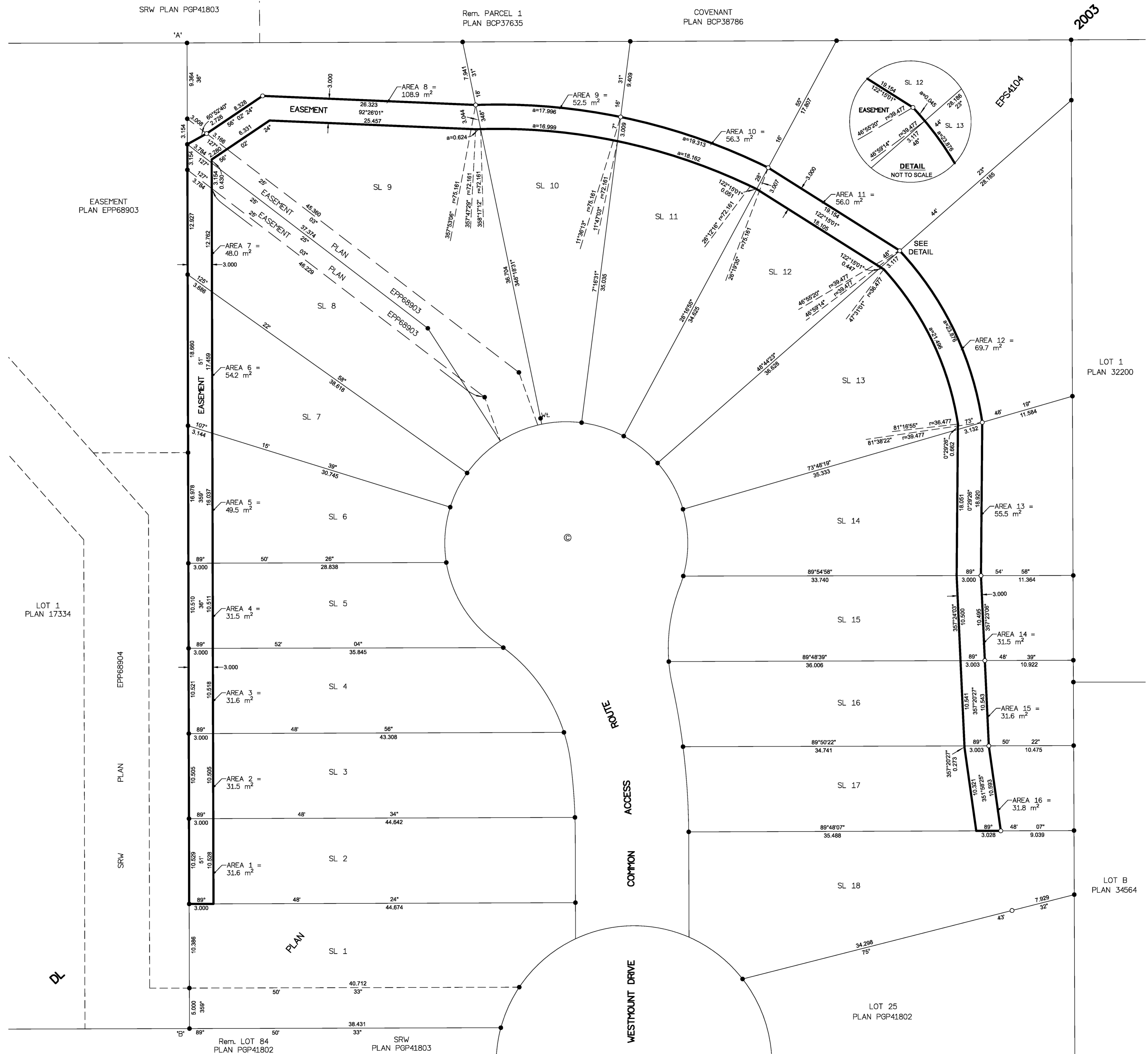
BOOK OF REFERENCE	
LEGAL DESCRIPTION	AREA
SL 2, DL 2003, PLAN EPS4104	AREA 1 = 31.6 m <sup>2</sup>
SL 3, DL 2003, PLAN EPS4104	AREA 2 = 31.5 m <sup>2</sup>
SL 4, DL 2003, PLAN EPS4104	AREA 3 = 31.6 m <sup>2</sup>
SL 5, DL 2003, PLAN EPS4104	AREA 4 = 31.5 m <sup>2</sup>
SL 6, DL 2003, PLAN EPS4104	AREA 5 = 49.5 m <sup>2</sup>
SL 7, DL 2003, PLAN EPS4104	AREA 6 = 54.2 m <sup>2</sup>
SL 8, DL 2003, PLAN EPS4104	AREA 7 = 48.0 m <sup>2</sup>
SL 9, DL 2003, PLAN EPS4104	AREA 8 = 108.9 m <sup>2</sup>
SL 10, DL 2003, PLAN EPS4104	AREA 9 = 52.5 m <sup>2</sup>
SL 11, DL 2003, PLAN EPS4104	AREA 10 = 56.3 m <sup>2</sup>
SL 12, DL 2003, PLAN EPS4104	AREA 11 = 56.0 m <sup>2</sup>
SL 13, DL 2003, PLAN EPS4104	AREA 12 = 69.7 m <sup>2</sup>
SL 14, DL 2003, PLAN EPS4104	AREA 13 = 55.5 m <sup>2</sup>
SL 15, DL 2003, PLAN EPS4104	AREA 14 = 31.5 m <sup>2</sup>
SL 16, DL 2003, PLAN EPS4104	AREA 15 = 31.6 m <sup>2</sup>
SL 17, DL 2003, PLAN EPS4104	AREA 16 = 31.8 m <sup>2</sup>
<b>TOTAL AREA</b>	<b>771.7 m<sup>2</sup></b>



THE FIELD SURVEY REPRESENTED BY THIS PLAN WAS COMPLETED ON THE 18th DAY OF JULY, 2019

SHAUNA C. GOERTZEN, BCLS 798

THIS PLAN LIES WITHIN THE REGIONAL DISTRICT OF FRASER-FORT GEORGE.



PLAN EPP94726

**McElhanney**  
 McELHANNEY ASSOCIATES  
 LAND SURVEYING LTD.  
 Suite 12  
 656 North Nechako Road  
 Prince George BC  
 Canada V2K 1A1  
 Tel 250 561 2229  
 File No. 2341-6521-E1

Filed PG EPP94726 EPP94726 156-951-2713 RCVD:2019-09-26 RQST:2019-10-23 03:01 Prince George, City of