

**SUBDIVISION PLAN OF PART OF THE NORTH EAST 1/4, EXCEPT: PARCEL A (D2212), AND PLANS 8488, 8956, 12915, 13121, 16233, 26295, PGP35818, BCP26911 AND EPP22433; AND LOT 1, PLAN BCP26911; ALL IN DISTRICT LOT 634, CARIBOO DISTRICT.**

**PLAN EPP94624**

PURSUANT TO SECTION 67 OF THE LAND TITLE ACT

THIS PLAN LIES WITHIN INTEGRATED SURVEY AREA  
No. 39 PRINCE GEORGE, BC, NAD83 (CSRS) 4.0.0.BC.1

BCGS 93G.087



THE INTENDED PLOT SIZE OF THIS PLAN IS 560mm IN WIDTH BY 432mm IN HEIGHT (C SIZE) WHEN PLOTTED AT A SCALE OF 1:1500.

ALL DISTANCES ARE IN METRES AND DECIMALS THEREOF.

GRID BEARINGS ARE DERIVED FROM GNSS OBSERVATIONS TO GEODETIC CONTROL MONUMENTS 85H1250 AND 86H1834.

THE UTM COORDINATES AND ESTIMATED ABSOLUTE ACCURACY ACHIEVED HAVE BEEN DERIVED FROM MASCOT PUBLISHED COORDINATES AND STANDARD DEVIATIONS FOR GEODETIC CONTROL MONUMENT 85H1250.

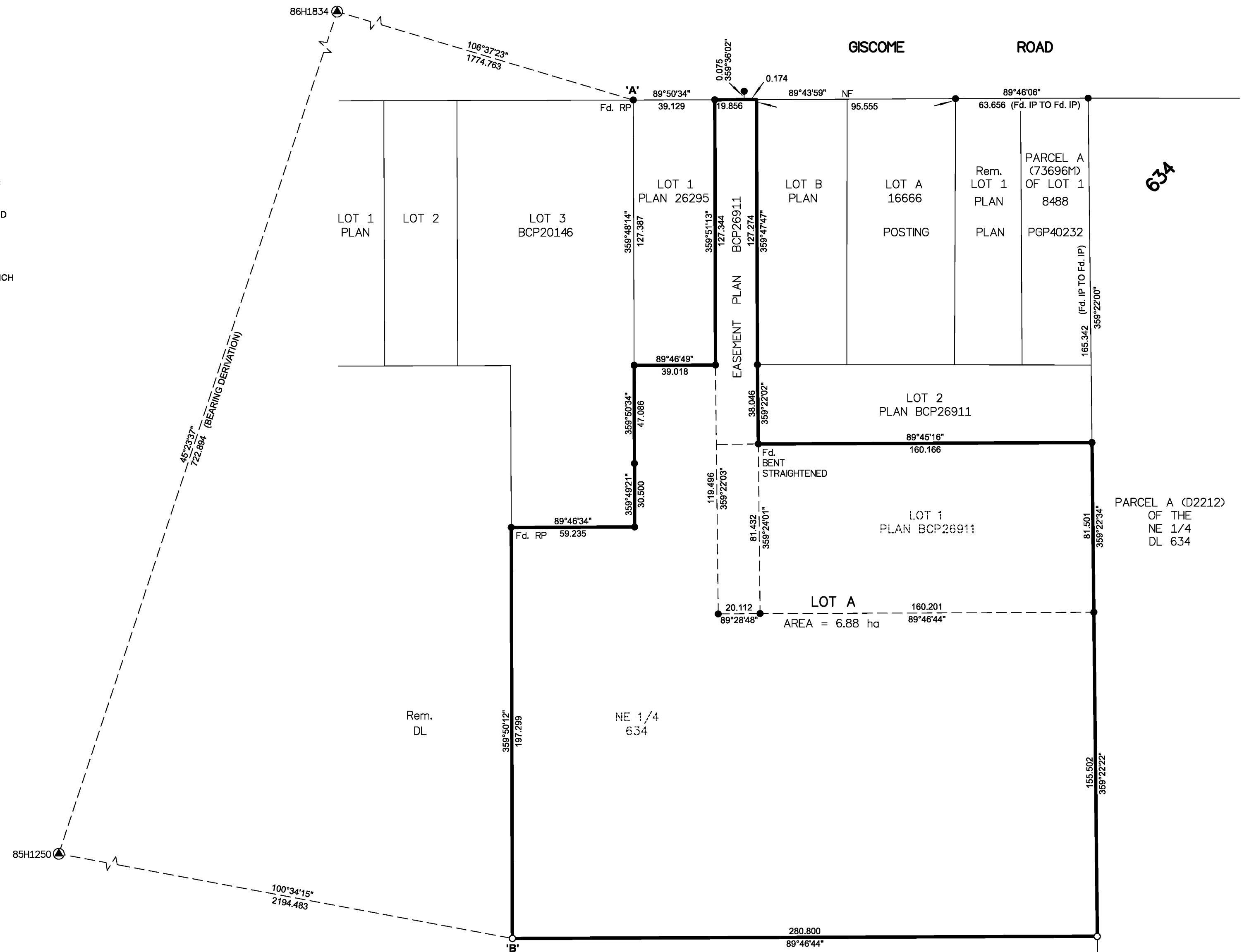
THIS PLAN SHOWS HORIZONTAL GROUND-LEVEL DISTANCES UNLESS OTHERWISE SPECIFIED. TO COMPUTE GRID DISTANCES, MULTIPLY GROUND-LEVEL DISTANCES BY THE COMBINED FACTOR OF 0.9995020 WHICH HAS BEEN DERIVED FROM GEODETIC CONTROL MONUMENT 85H1250.

NOTE:  
SOME POSTS AND LINES ARE EXAGGERATED FOR CLARITY.

**LEGEND**

SYMBOLS		DESCRIPTION
FOUND	PLACED	
●	○	CONTROL MONUMENT
●	○	STANDARD IRON POST
CSF		COMBINED SCALE FACTOR
EAA		ESTIMATED ABSOLUTE ACCURACY

GEOREFERENCING POSITIONS				
UTM COORDINATES, ZONE 10, NAD 83 (CSRS), 4.0.0.BC.1				
STATION	NORTHING	EASTING	EAA	CSF
Fd. IP 'A'	5972276.02	525564.63	0.12	0.9995020
Pl. IP 'B'	5971873.72	525506.65	0.12	0.9995020

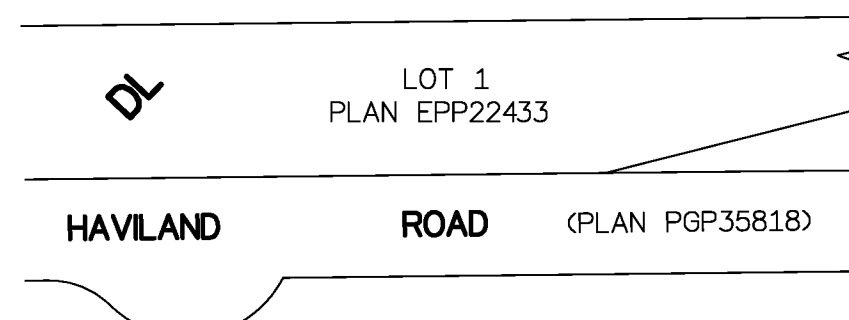


THIS PLAN LIES WITHIN THE JURISDICTION OF THE  
APPROVING OFFICER FOR THE CITY OF PRINCE GEORGE.

CPG FILE NO.: SD100598

THE FIELD SURVEY REPRESENTED BY THIS PLAN WAS COMPLETED  
ON THE 16th DAY OF JULY, 2019  
SHAUNA C. GOERTZEN, BCLS 798

THIS PLAN LIES WITHIN THE REGIONAL DISTRICT OF FRASER-FORT GEORGE.



**McElhanney**  
MCELHANNEY ASSOCIATES  
LAND SURVEYING LTD.  
Suite 12  
556 North Nechako Road  
Prince George BC  
Canada V2K 1A1  
Tel 250 561 2229

File No. 6018-2086-S  
CPG File No.: SD100598