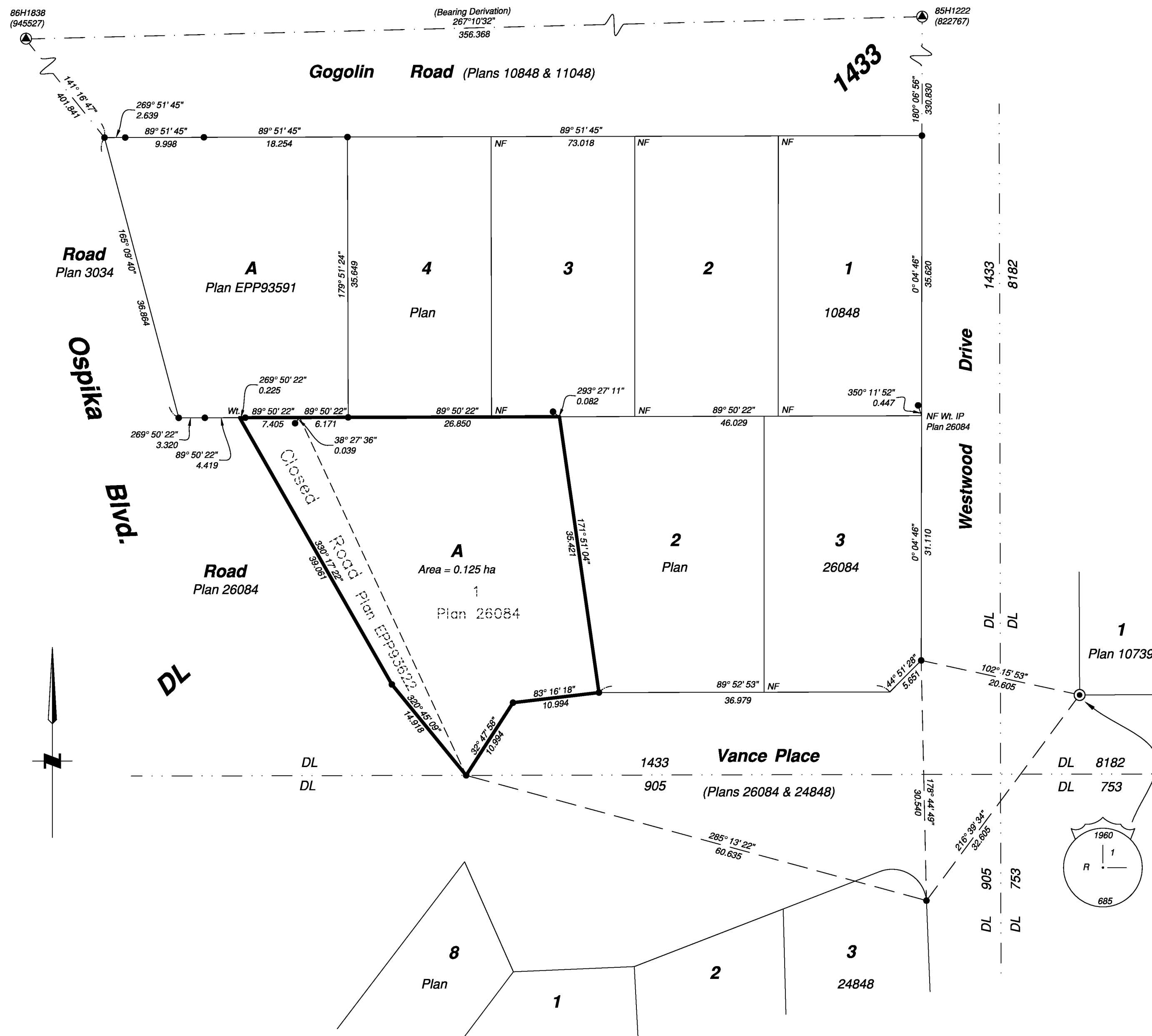


PLAN EPP93623



REFERENCE PLAN OF:
1: Lot 1, Plan 26084;
2: That part of Closed Road as shown
on Plan EPP93622;
All in District Lot 1433, Cariboo District

PURSUANT TO SECTION 100(1)(b) OF THE LAND TITLE ACT.

Integrated survey area No. 39 Prince George, BC,
 NAD83 (CSRS) 4.0.0.BC.1

BCGS 93G.087



The intended plot size of this plan is 280mm in width by 432mm in height (C size) when plotted at a scale of 1:400.

All distances are in metres and decimals thereof.

Grid bearings are derived from observations between geodetic control monuments 85H1222 and 86H1838.

The UTM coordinates and estimated horizontal positional accuracy achieved have been derived from mascot published coordinates and standard deviations for geodetic control monuments 85H1222 and 86H1838.

This plan shows horizontal ground-level distances unless otherwise specified. To compute grid distances, multiply ground-level distances by the average combined factor of 0.9995123 which has been derived from control monument 85H1222.

Note:
 This plan shows one or more witness posts which are not set on the true corner(s). Some posts are exaggerated for clarity.

Legend

Symbols	Description
Found	Placed
	Control Monument
	Standard Iron Post
	Standard Concrete Post
CSF	Combined Scale Factor
AHA	Absolute Horizontal Accuracy

Georeferencing Positions				
UTM Coordinates, Zone 10, NAD 83 (CSRS), 4.0.0.BC.1				
Station	Northing	Easting	AHA	CSF
85H1222	5970710.48	514481.84	0.10	0.9995123
86H1838	5970692.93	514126.08	0.10	0.9995111

The field survey represented by this plan was completed on the 13th day of June, 2019

Albert Koehler, BCLS 974

This plan lies within the Regional District of Fraser-Fort George

File: 19057-CONS

KOEHLER LAND SURVEYING INC.
 1698 Lyon Street South
 Prince George, BC V2N 1T3
 Tel: (250) 614-9703