

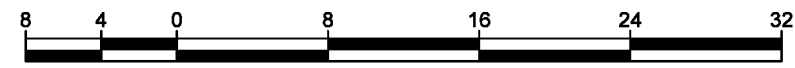
**REFERENCE PLAN OF EASEMENT OVER PART OF  
LOT 1, DISTRICT LOT 1429, CARIBOO DISTRICT,  
PLAN EPP72370.**

**PLAN EPP93306**

PURSUANT TO SECTION 99(1)(e) OF THE LAND TITLE ACT.  
FOR EASEMENT PURPOSES

THIS PLAN LIES WITHIN INTEGRATED SURVEY AREA  
No. 39 PRINCE GEORGE, BC, NAD83 (CSRS) 4.0.0.BC.1

BCGS 93G.097



THE INTENDED PLOT SIZE OF THIS PLAN IS 560mm IN WIDTH BY 432mm IN HEIGHT (C SIZE) WHEN PLOTTED AT A SCALE OF 1:400.

ALL DISTANCES ARE IN METRES AND DECIMALS THEREOF.

GRID BEARINGS ARE DERIVED FROM PLAN EPP72370.

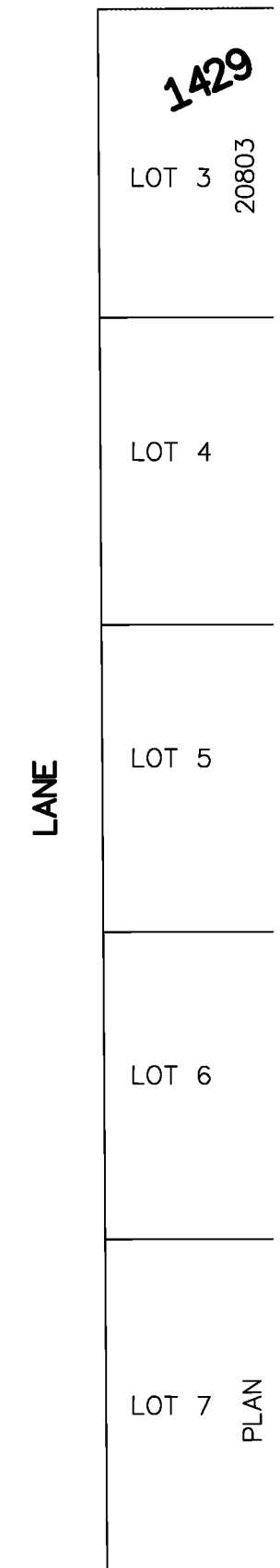
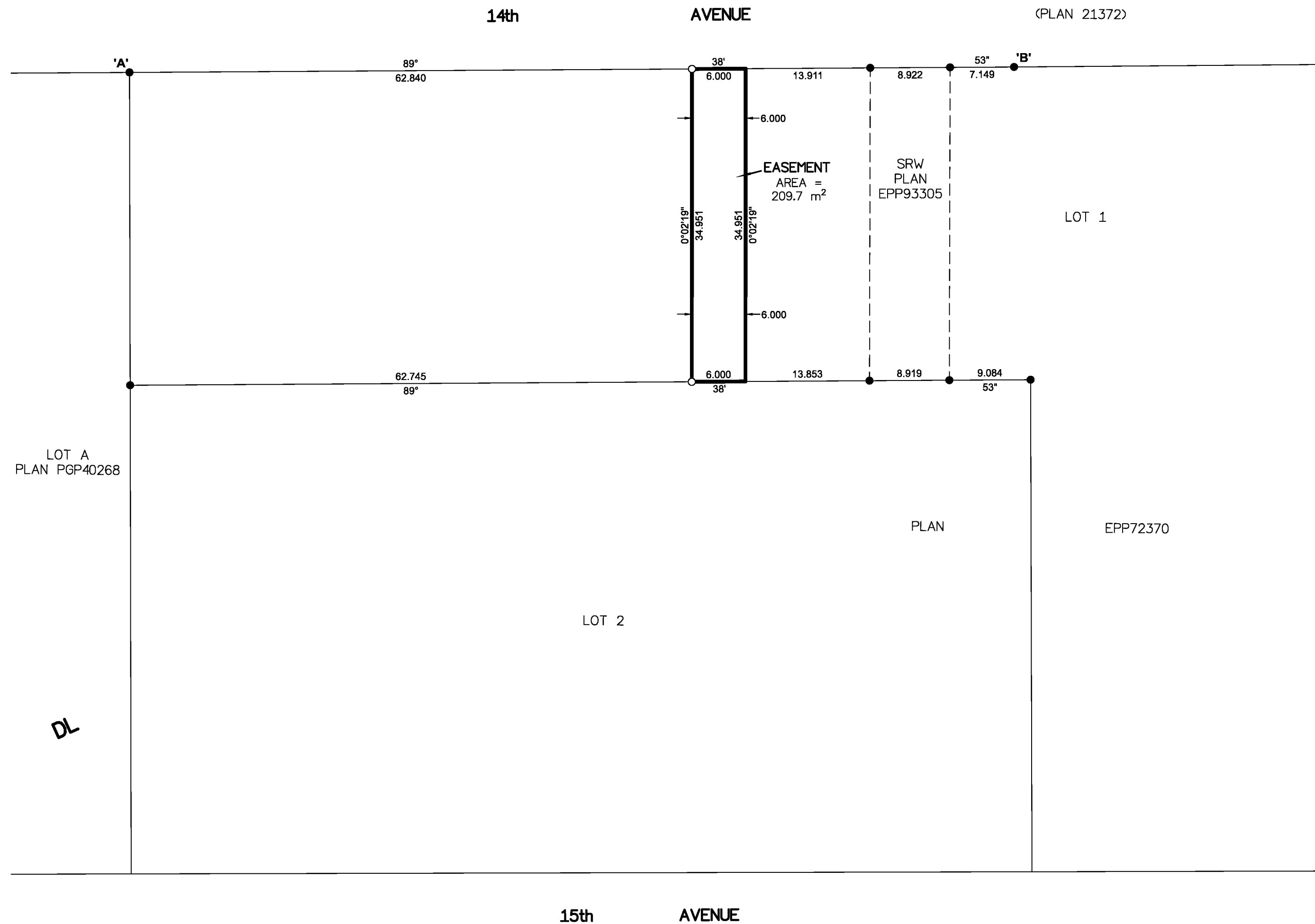
THE UTM COORDINATES AND ESTIMATED ABSOLUTE ACCURACY  
ACHIEVED HAVE BEEN DERIVED FROM PLAN EPP72370.

THIS PLAN SHOWS HORIZONTAL GROUND-LEVEL DISTANCES UNLESS  
OTHERWISE SPECIFIED. TO COMPUTE GRID DISTANCES, MULTIPLY  
GROUND-LEVEL DISTANCES BY THE AVERAGE COMBINED FACTOR OF  
0.9995118 WHICH HAS BEEN DERIVED FROM PLAN EPP72370.

**LEGEND**

SYMBOLS	DESCRIPTION
FOUND PLACED	
● ○	STANDARD IRON POST
CSF	COMBINED SCALE FACTOR
EAA	ESTIMATED ABSOLUTE ACCURACY

GEOREFERENCING POSITIONS UTM COORDINATES, ZONE 10, NAD 83 (CSRS), 4.0.0.BC.1				
STATION	NORTHING	EASTING	EAA	CSF
Fd. IP 'A'	5973676.21	514676.10	0.09	0.9995114
Fd. IP 'B'	5973676.82	514774.87	0.09	0.9995121



THE FIELD SURVEY REPRESENTED BY THIS PLAN WAS COMPLETED  
ON THE 4th DAY OF JUNE, 2019  
SHAUNA C. GOERTZEN, BCLS 798

THIS PLAN LIES WITHIN THE REGIONAL DISTRICT OF FRASER-FORT GEORGE.

**McElhanney**  
McELHANNEY ASSOCIATES  
LAND SURVEYING LTD.  
Suite 12  
556 North Nechako Road  
Prince George BC  
Canada V2K 1A1  
Tel 250 561 2229  
File No. 2341-6558-E