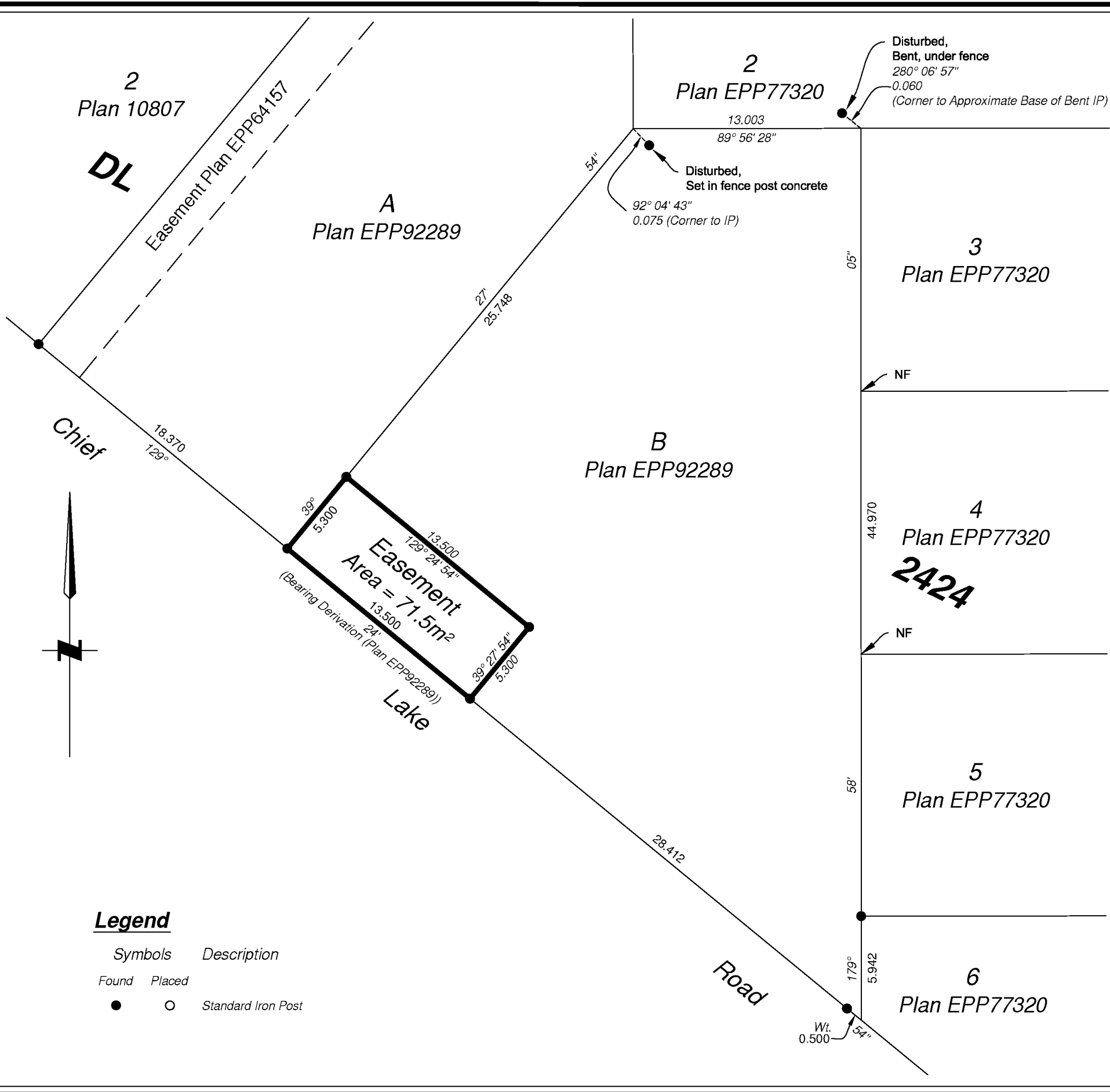


PLAN EPP92295



Reference Plan of Easement over part of Lot B, District Lot 2424, Cariboo District, Plan EPP92289.

Pursuant to Section 99(1)(e) of the Land Title Act.
 Integrated survey area No. 39 Prince George, BC,
 NAD83 (CSRS) 4.0.0.BC.1
 BCGS 93J.006



The intended plot size of this plan is 280mm in width by 432mm in height (B size) when plotted at a scale of 1:250.

All distances are in metres and decimals thereof.
 Grid bearings are derived from Plan EPP92289.

This plan shows horizontal ground-level distances unless otherwise specified. To compute grid distances, multiply ground-level distances by the average combined factor of 0.9994864 which has been derived from Plan EPP92289.

Note:
 This plan shows one or more witness posts which are not set on the true corner(s).
 Some posts are exaggerated for clarity.

The field survey represented by this plan was completed on the 1st day of May, 2019.

Scott Maguire, BCLS 903

This plan lies within the Regional District of Fraser-Fort George

Legend

Symbols	Description
Found	Placed
●	○
	Standard Iron Post

File: 19046-REF

KOEHLER LAND SURVEYING INC.
 1698 Lyon Street South
 Prince George, BC V2N 1T3
 Tel: (250) 614-9703