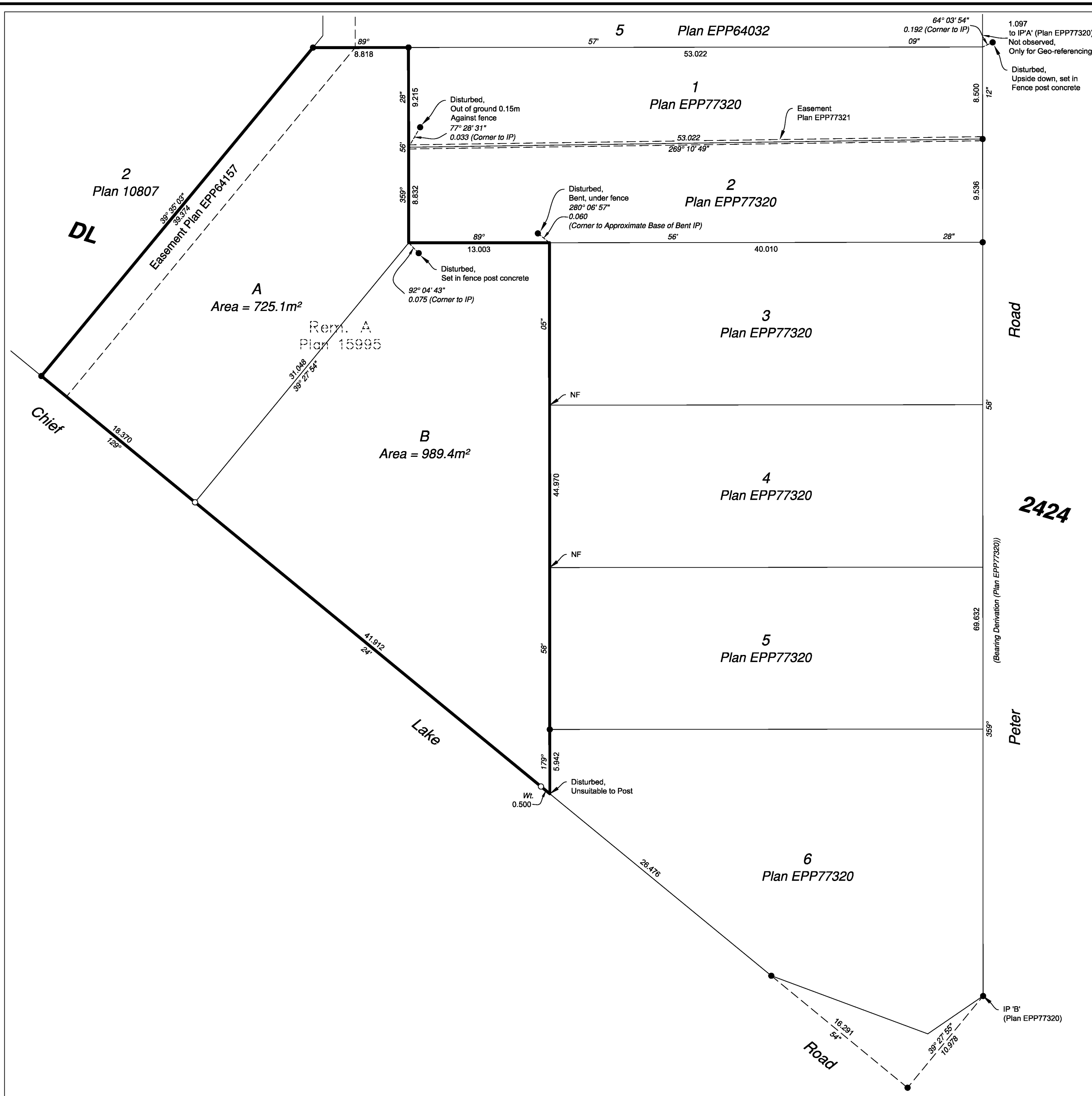


PLAN EPP92289



Subdivision Plan of Lot A, District Lot 2424, Cariboo District, Plan 15995, Except Plans EPP64032 and EPP77320

PURSUANT TO SECTION 67 OF THE LAND TITLE ACT
 Integrated survey area No. 39 Prince George, BC,
 NAD83 (CSRS) 4.0.0.BC.1
 BCGS 93J.006



The intended plot size of this plan is 432mm in width by 559mm in height (C size) when plotted at a scale of 1:250.

All distances are in metres and decimals thereof.

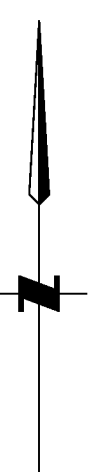
Grid bearings are derived from Plan EPP77320.

This plan shows horizontal ground-level distances unless otherwise specified. To compute grid distances, multiply ground-level distances by the average combined factor of 0.9994864 which has been derived from Plan EPP77320.

Note:
 This plan shows one or more witness posts which are not set on the true corner(s).
 Some posts are exaggerated for clarity.

Legend

Found	Placed	Description
●	○	Standard Iron Post



This plan lies within the jurisdiction of the approving officer for the City of Prince George.

CPG File No.: SD100574

The field survey represented by this plan was completed on the 1st day of May, 2019.

Scott Maguire, BCLS 903

This plan lies within the Regional District of Fraser-Fort George

File: 19046-SD
KOEHLER LAND SURVEYING INC.
 1698 Lyon Street South
 Prince George, BC V2N 1T3
 Tel: (250) 614-9703