

Statutory Right of Way Plan over part of Lot 1, District Lot 3050 & 1574, Cariboo District, Plan EPP92135.

Pursuant to Section 113 of the Land Title Act
 Integrated survey area No. 39 Prince George, BC,
 NAD83 (CSRS) 4.0.0.BC.1
 BCGS 93G.097



The intended plot size of this plan is 432mm in width by 559mm in height (C size) when plotted at a scale of 1:1000.

All distances are in metres and decimals thereof.

Grid bearings are derived from Plan EPP28438.

The UTM coordinates and estimated absolute accuracy are derived from Plan EPP28438.

This plan shows horizontal ground-level distances, unless otherwise specified. To compute grid distances, multiply ground-level distances by the average combined factor of 0.9995097. The average combined factor has been determined based on Plan EPP28438.

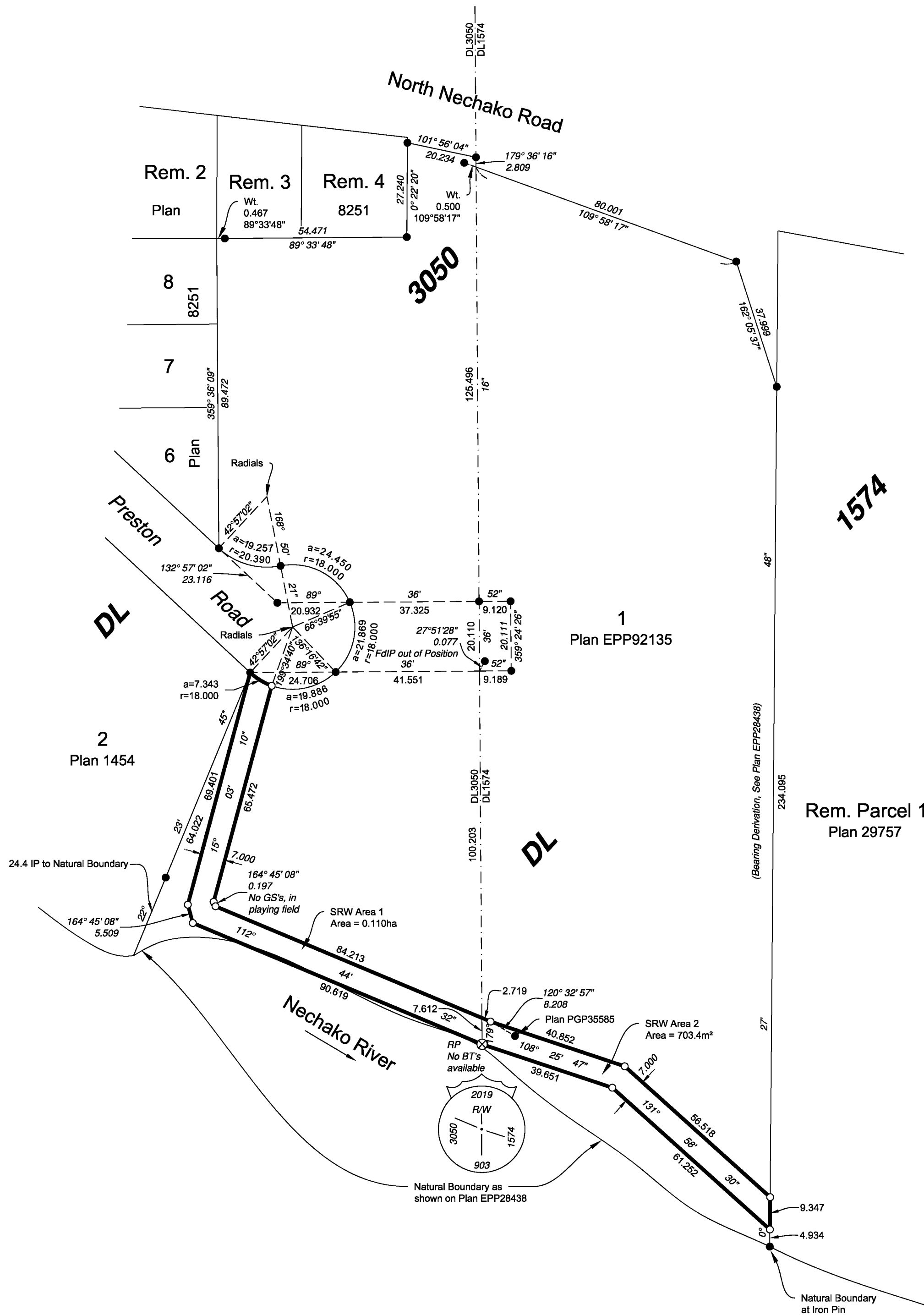
Note:
 This plan shows one or more witness posts which are not set on the true corner(s).

Some posts are exaggerated for clarity.

Wooden Guard Stakes are set at all placed iron posts unless otherwise noted.

Legend

Symbols	Description
Found	Placed
⊗	Standard Capped Post
●	Standard Iron Post
GS	Wooden Guard Stake
RP	Metal Reference Post
BT	Bearing Tree



STATUTORY RIGHT OF WAY

BOOK OF REFERENCE		
STATUTORY RIGHT OF WAY	DESCRIPTION	AREA REQUIRED
SRW '1'	Part of Lot 1, DL 3050, Cariboo District, Plan EPP92135	0.110ha
SRW '2'	Part of Lot 1, DL 1574, Cariboo District, Plan EPP92135	703.4m ²
Total Area		0.181ha

The field survey represented by this plan was completed on the 12th day of September, 2019.

Scott Maguire, BCLS 903

This plan lies within the Regional District of Fraser-Fort George

File: 19033-SRW

KOEHLER LAND SURVEYING INC.
 1698 Lyon Street South
 Prince George, BC V2N 1T3
 Tel: (250) 614-9703