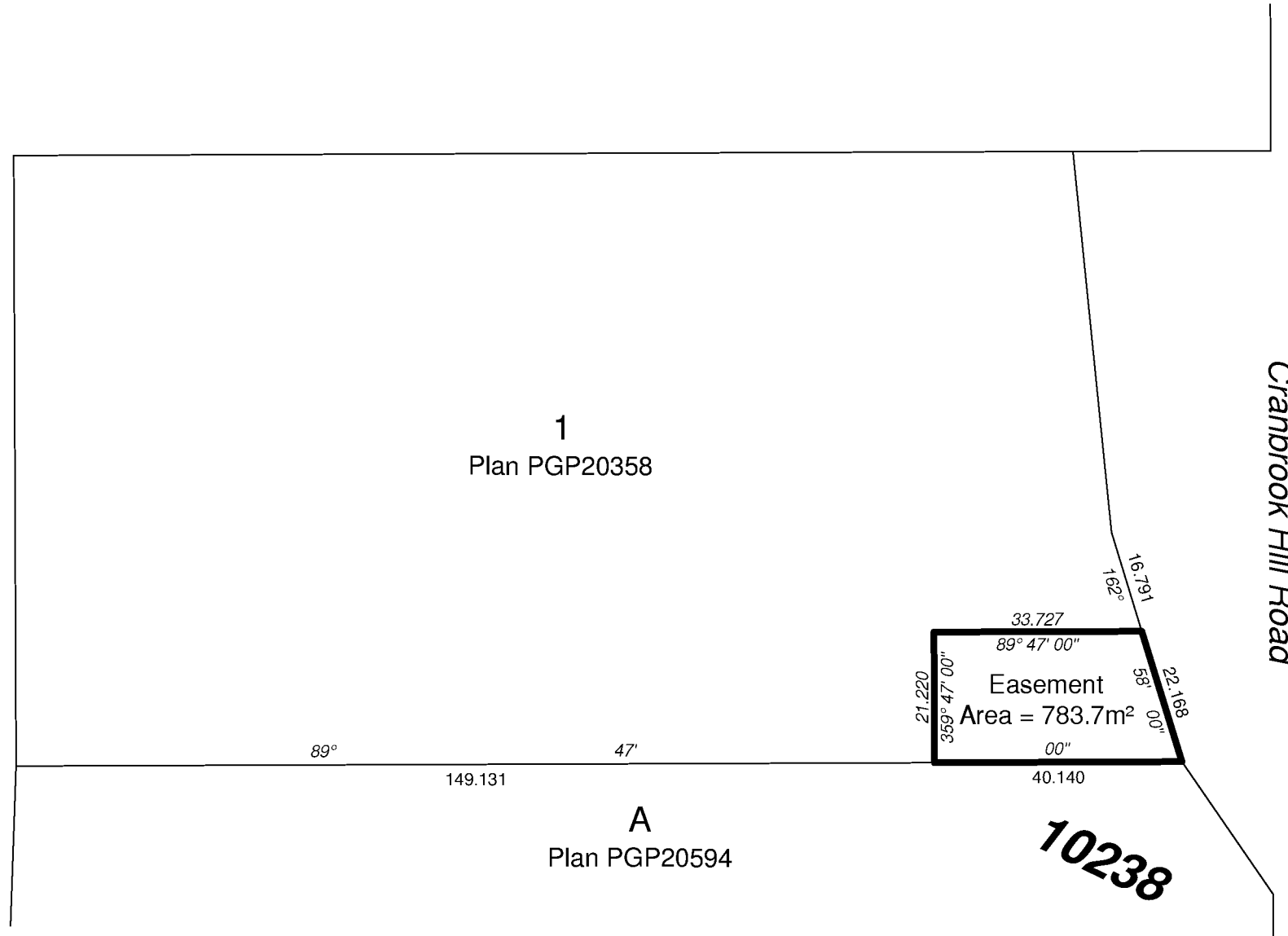
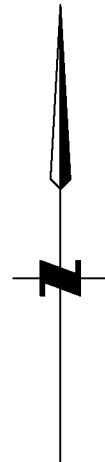


# PLAN EPP91951

Rem.  
DL 10238

DL



## Explanatory Plan of Easement over part of Lot 1, District Lot 10238, Cariboo District, Plan 20358

Pursuant to section 99(1)(e) of the Land Title Act.

Integrated survey area No. 39 Prince George, BC, NAD83 (CSRS) 4.0.0.BC.1

BCGS 93G.096



The intended plot size of this plan is 280mm in width by 432mm in height (B size) when plotted at a scale of 1:1000.

All distances are in metres and decimals thereof.

This plan shows horizontal ground-level distances unless otherwise specified.

Bearings are astronomic based on Plan 20358.

The plan is based on the following Land Title and Survey Authority of BC records:

Plan 20358

16th day of April, 2019

Scott Maguire, BCLS 903

This plan lies within the Fraser-Fort George Regional District

File: 19039-EXP

**KOEHLER LAND SURVEYING INC.**  
1698 Lyon Street South  
Prince George, BC V2N 1T3  
Tel: (250) 614-9703