

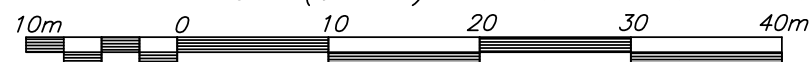
REFERENCE PLAN OF STATUTORY RIGHT OF WAY  
 WITHIN LOTS 8 & 9, DISTRICT LOT 1599, CARIBOO  
 DISTRICT, PLAN EPP9175.

PLAN EPP9176

BCGS 93G.086

PURSUANT TO SECTION 113 OF THE LAND TITLE ACT

THE INTENDED PLOT SIZE OF THIS PLAN IS 560mm IN WIDTH BY  
 432mm IN HEIGHT (C SIZE) WHEN PLOTTED AT A SCALE OF 1:500



LEGEND

THIS PLAN LIES WITHIN THE INTEGRATED SURVEY  
 AREA No. 39, PRINCE GEORGE, B.C. NAD83 (CSRS)

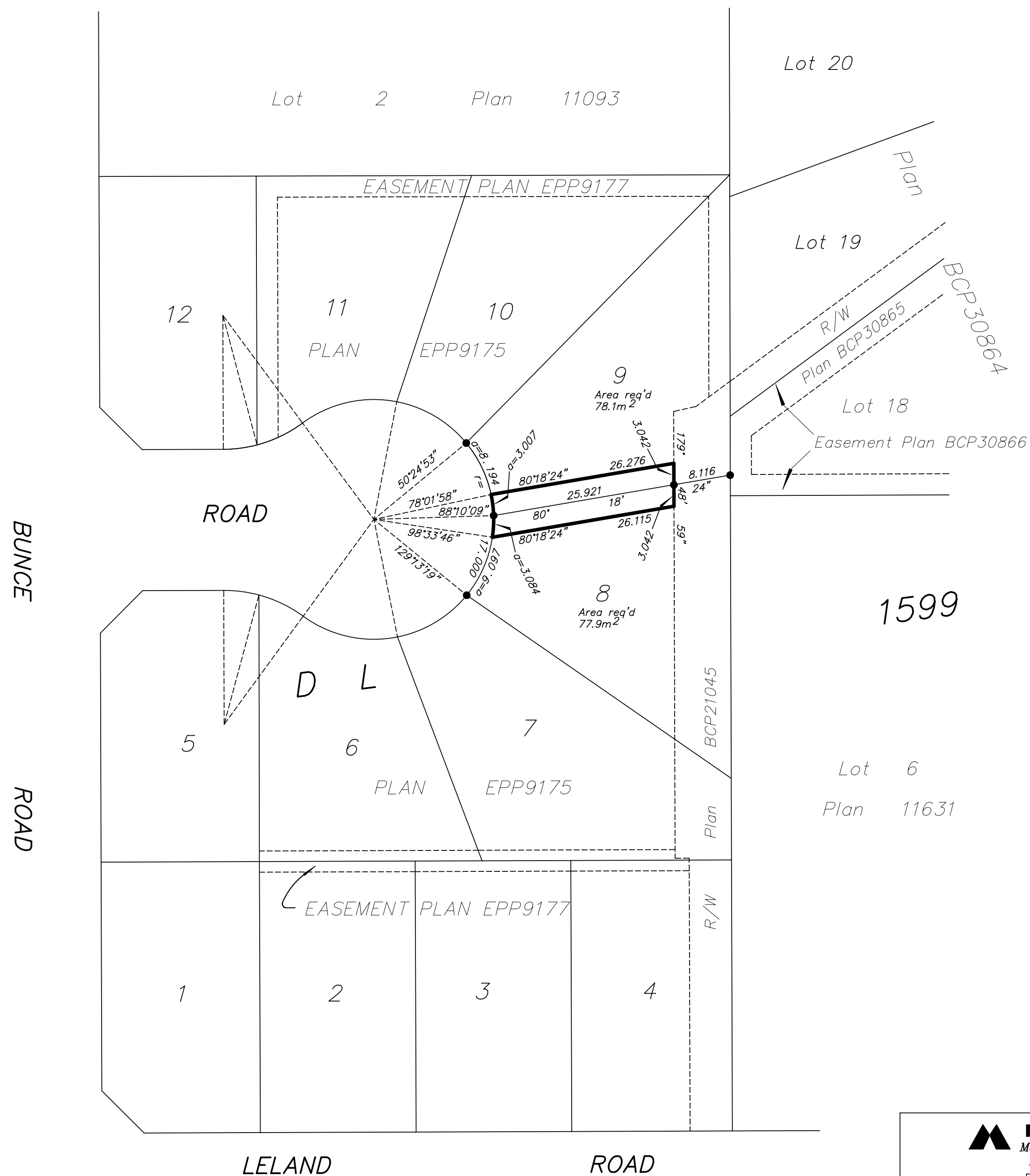
GRID BEARINGS ARE DERIVED FROM PREVIOUSLY  
 INTEGRATED PLAN EPP9175.

THIS PLAN SHOWS HORIZONTAL GROUND-LEVEL DISTANCES  
 EXCEPT WHERE OTHERWISE NOTED. TO COMPUTE GRID  
 DISTANCES MULTIPLY GROUND-LEVEL DISTANCES BY  
 THE COMBINED FACTOR 0.999488.

- DENOTES STANDARD IRON POST FOUND
- DENOTES STANDARD IRON POST PLACED



BOOK OF REFERENCE	
DESCRIPTION	AREA
Lot 8, Plan EPP9175,	77.9m <sup>2</sup>
Lot 9, Plan EPP9175,	78.1m <sup>2</sup>



THE FIELD SURVEY REPRESENTED BY THIS PLAN  
 WAS COMPLETED BY DALE KEOWN, BCLS  
 ON THE 7th DAY OF OCTOBER, 2010.

THIS PLAN LIES WITHIN THE REGIONAL DISTRICT OF FRASER-FORT GEORGE.

<p><b>McElhanney</b>                  McElhanney Associates                  Land Surveying Ltd.                  Prince George, B.C.                  Ph: (250) 561-2229 Fax: 563-1941</p>	
D.L. 1599	FILE NO. 5845-RW