

SUBDIVISION PLAN OF LOT 3, DISTRICT LOT 1599, CARIBOO DISTRICT, PLAN 11093.

PLAN EPP9175

BCGS 93G.086

THE INTENDED PLOT SIZE OF THIS PLAN IS 560mm IN WIDTH BY 432mm IN HEIGHT (C SIZE) WHEN PLOTTED AT A SCALE OF 1:750



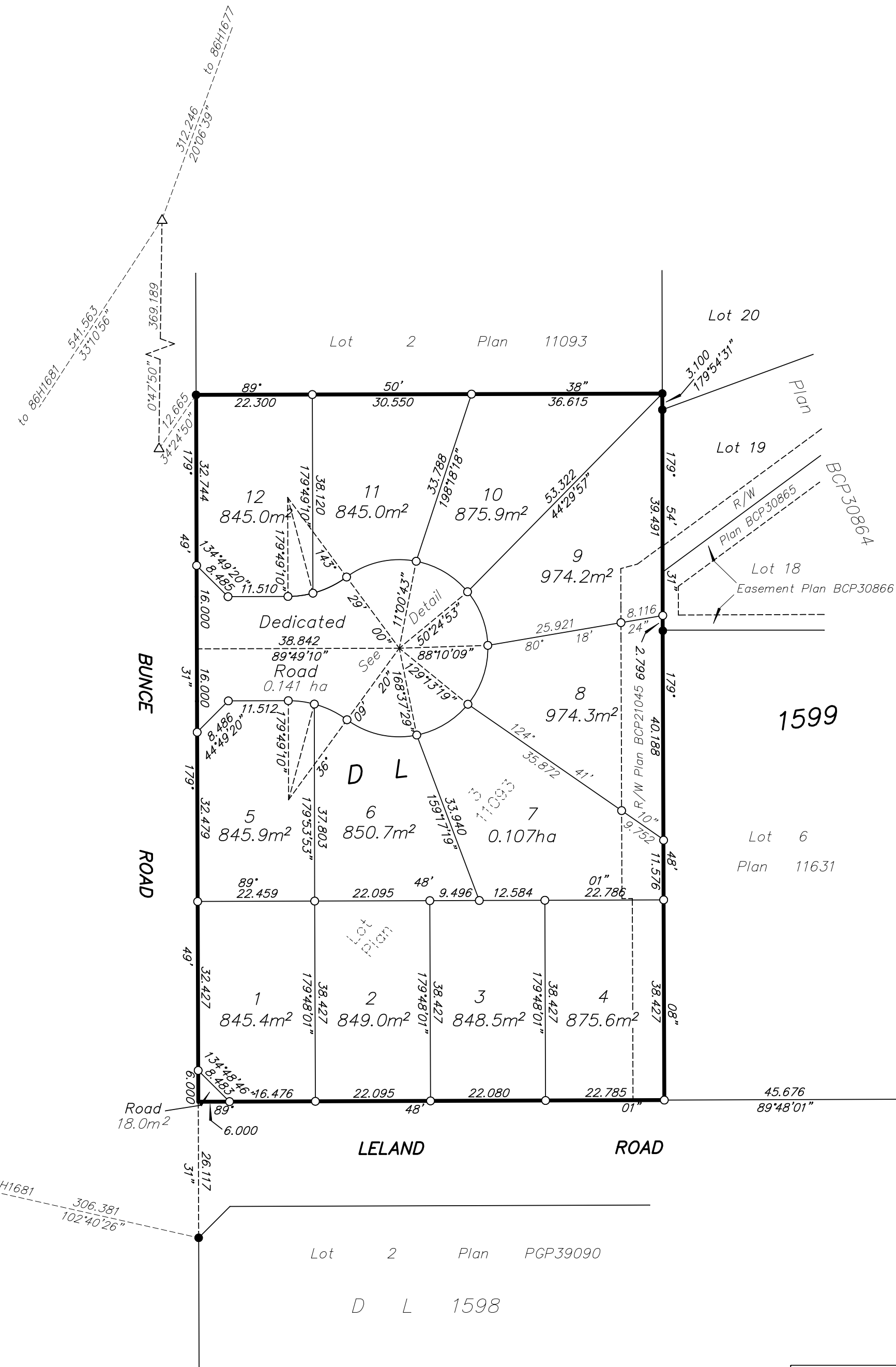
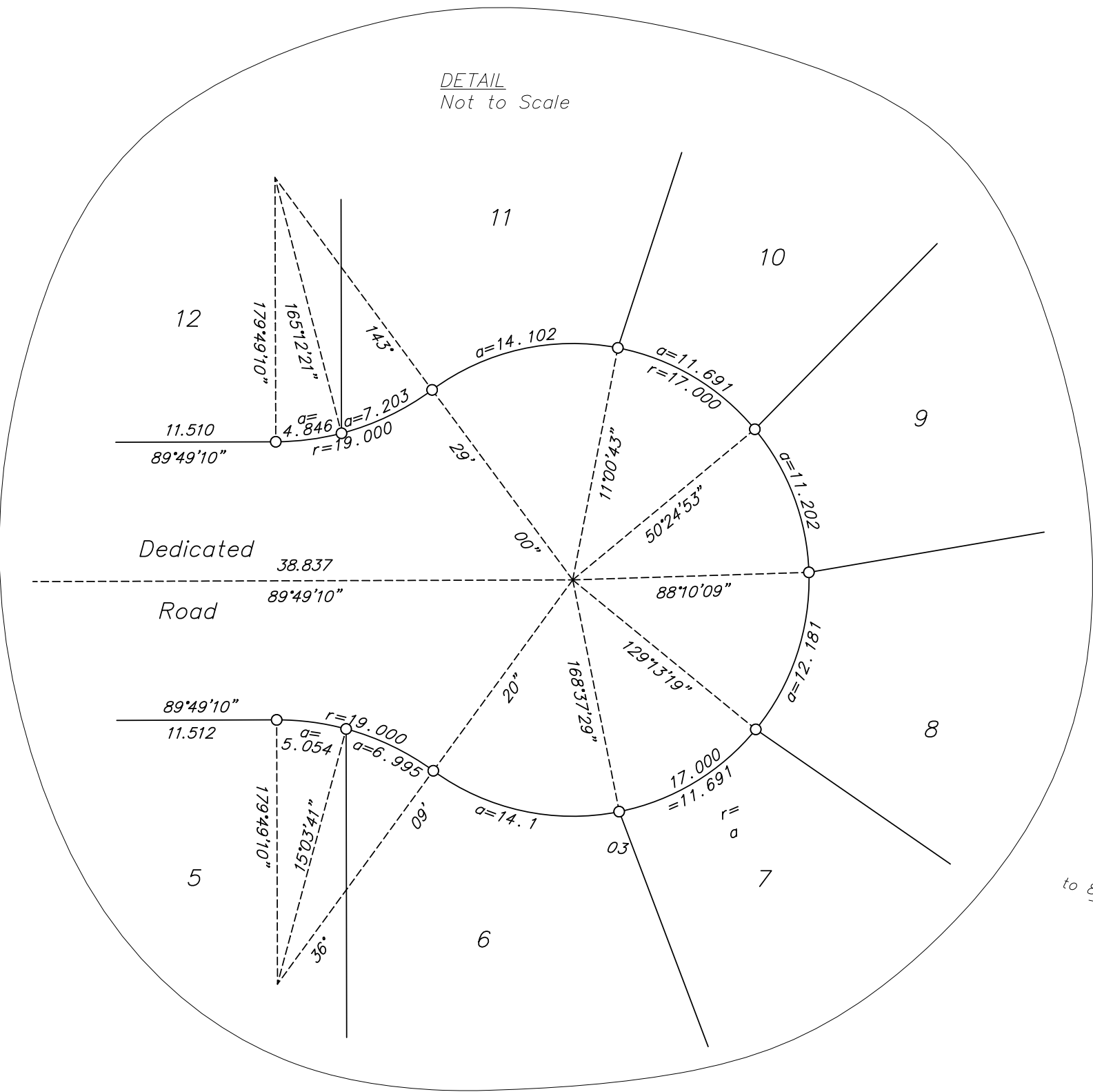
ALL LINEAR MEASUREMENTS ARE SHOWN AS HORIZONTAL GROUND-LEVEL DISTANCES IN METRES AND DECIMALS THEREOF UNLESS OTHERWISE INDICATED.

LEGEND

Note: This plan shows ground-level distances except where otherwise noted. To compute grid distances, multiply ground-level distances by combined factor 0.999488

Grid bearings are derived from observations between control monuments 86H1805 and 87H3535, integrated survey area number 39, City of Prince George, B.C. NAD83(CSRS)

- DENOTES STANDARD IRON POST FOUND
- DENOTES STANDARD IRON POST PLACED
- △ DENOTES TRAVERSE HUB PLACED



THIS PLAN LIES WITHIN THE JURISDICTION OF THE APPROVING OFFICER FOR THE CITY OF PRINCE GEORGE.
THE FIELD SURVEY REPRESENTED BY THIS PLAN WAS COMPLETED BY DALE KEOWN, BCLS ON THE 7th DAY OF OCTOBER, 2010.

THIS PLAN LIES WITHIN THE REGIONAL DISTRICT OF FRASER-FORT GEORGE.

McElhanney
McElhanney Associates
Land Surveying Ltd.
Prince George, B.C.
Ph: (250) 561-2229 Fax: 563-1941

| | |
|-----------|-----------------|
| D.L. 1599 | FILE NO. 5845-S |
|-----------|-----------------|