

STATUTORY RIGHT OF WAY PLAN

Over Part of Lot 9, District Lot 2013, Cariboo District, Plan 25644.

Pursuant to Section 113 of the Land Title Act.

Integrated survey area no.39 Prince George, BC
NAD83 (CSRS) 4.0.0.BC.1

BCGS 93G.087

SCALE:



The intended plot size of this plan is 560mm in width by 432mm in height (C size) when plotted at a scale of 1:500.

Grid bearings are derived from observations between geodetic control monuments 86H1831 and 86H1503 and are referred to the central meridian of UTM Zone 10 North.

The UTM coordinates and estimated absolute accuracy achieved are derived from the mascot published coordinates and standard deviations for geodetic control monuments 86H1831 and 86H1503.

This plan shows horizontal ground-level distances, unless otherwise specified. To compute grid distances, multiply ground-level distances by the average combined factor of 0.999505. The average combined factor has been determined based on geodetic control monuments 86H1831 and 86H1503.

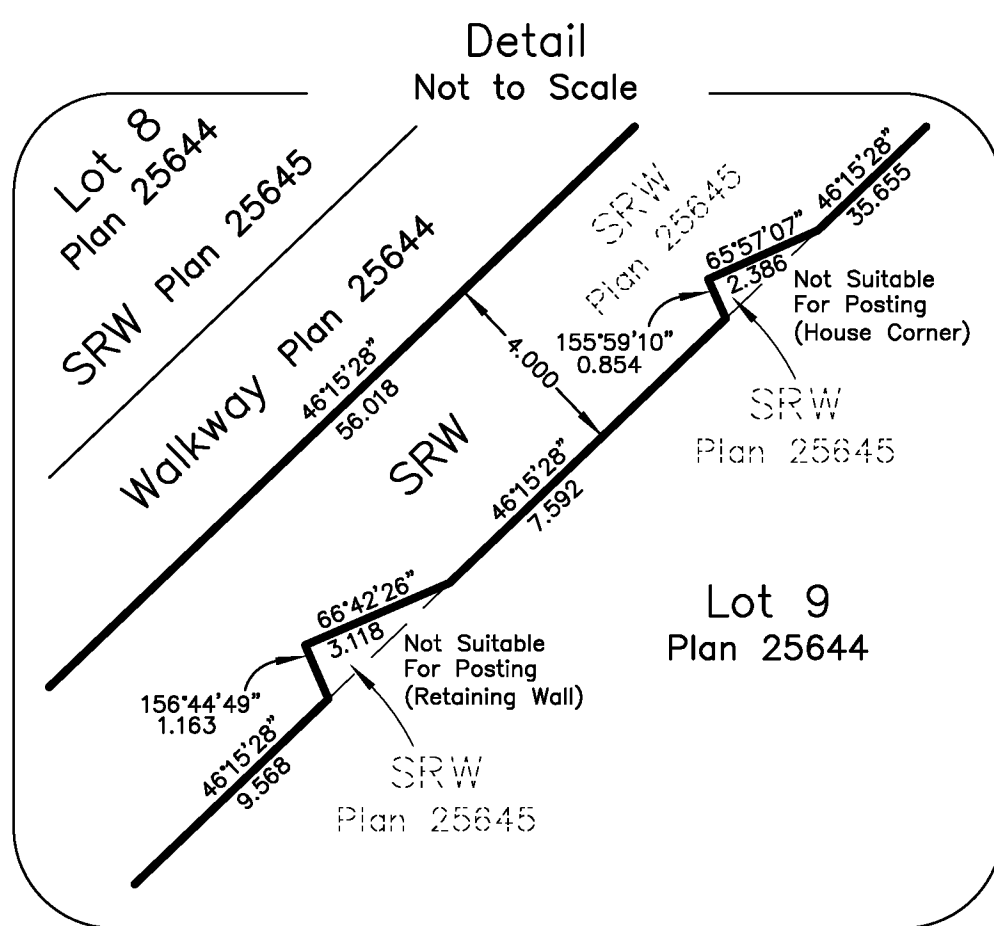
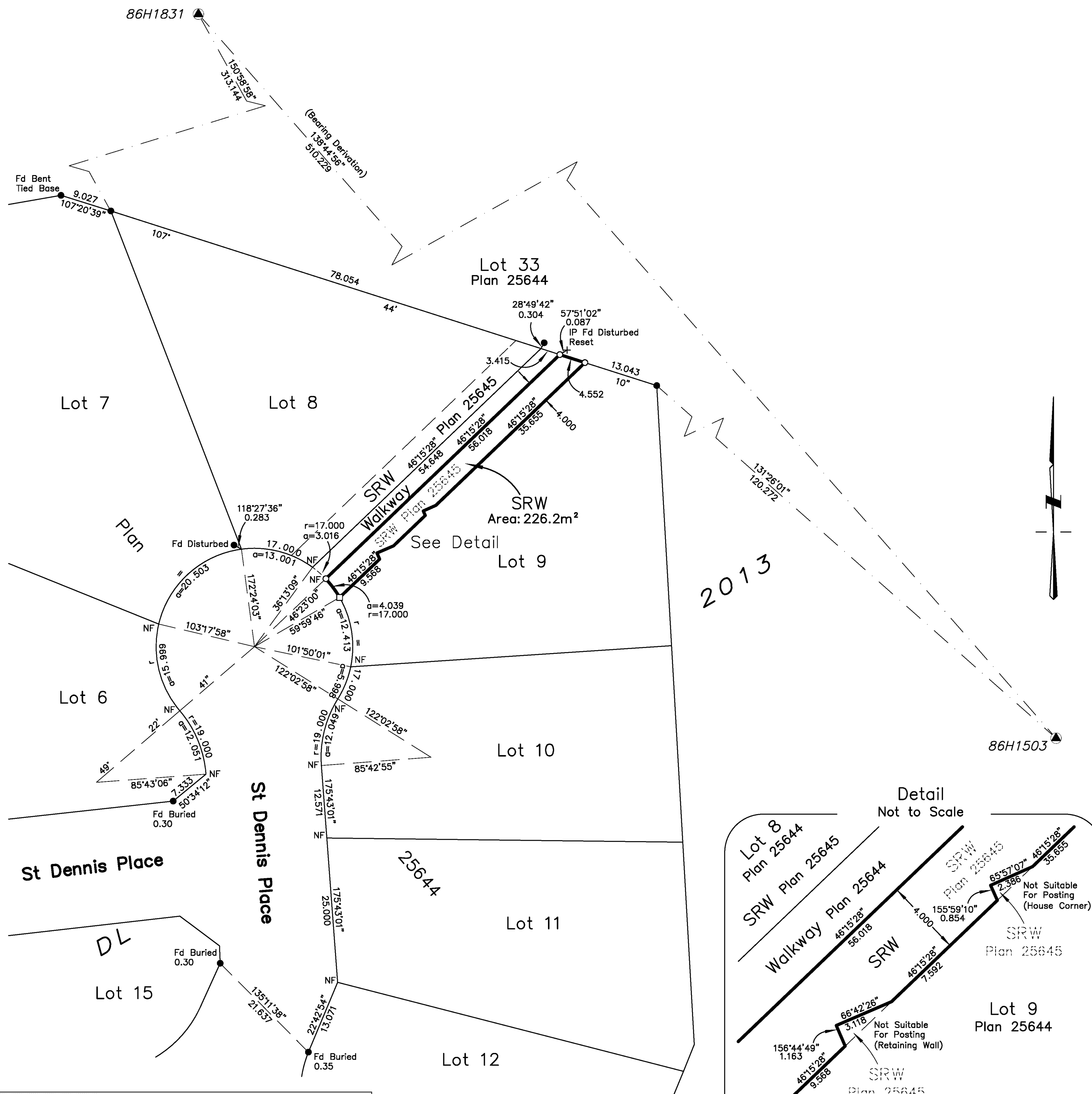
LEGEND:

Symbols	Description	
Found	Placed	
▲	○	Control Monument
●	○	Standard Iron Post
	□	Lead Plug
+		Unmarked measured point
CF		Combined Factor
EAA		Estimated Absolute Accuracy

UTM Zone 10 Coordinates NAD83 (CSRS) 4.0.0.BC.1				
Station	Northing	Easting	CF	EAA
86H1831	5967114.33	514771.80	0.999503	0.13
86H1503	5966730.91	515108.05	0.999507	0.13

This plan lies within the Regional District of Fraser-Fort George.

The field survey represented by this plan was completed on the 14th day of May, 2019.
Darren Kent, BCLS 904



HBH LAND SURVEYING INC.
 Prince George 203-1300 1st Ave. Prince George, BC V2L 2Y3 250.640.2287
 Smithers 3750 1st Ave. PO Box 536 Smithers, BC V0J 2N0 250.847.3808
 www.HBHLandSurveying.com