

# SUBDIVISION PLAN

PLAN EPP90556

Of Lot A and Lot B, District Lot 2422, Cariboo District,  
Plan EPP76865.

Pursuant to Section 67 of the Land Title Act.

Integrated Survey Area No. 39 Prince George, BC. NAD83 (CSRS) 4.0.0.BC.1

BCGS 93J.006

SCALE:



The intended plot size of this plan is 560mm in width by  
432mm in height (C size) when plotted at a scale of 1:1000.

Grid bearings are derived from observations between geodetic  
control monuments 79H9422 and 79H9423 and are referred  
to the central meridian of UTM Zone 10.

The UTM coordinates and estimated absolute accuracy  
achieved are derived from the mascot published coordinates  
and standard deviations for geodetic control monuments  
79H9422 and 79H9423.

This plan shows horizontal ground-level distances, unless  
otherwise specified. To compute grid distances, multiply  
ground-level distances by the average combined factor of  
0.999481. The average combined factor has been determined  
from geodetic control monuments 79H9422 and 79H9423.

**LEGEND:**

Symbols		Description
Found	Placed	
●	○	Control Monument
●	○	Standard Iron Post
CF		Combined Factor
EAA		Estimated Absolute Accuracy

This plan lies within the Regional District of Fraser-Fort George.

The field survey represented by this plan was completed on the  
13th day of May, 2019.  
Darren Kent, BCLS 904

This plan lies within the jurisdiction of the Approving Officer  
for the City of Prince George.  
CPG File No. SD100590.

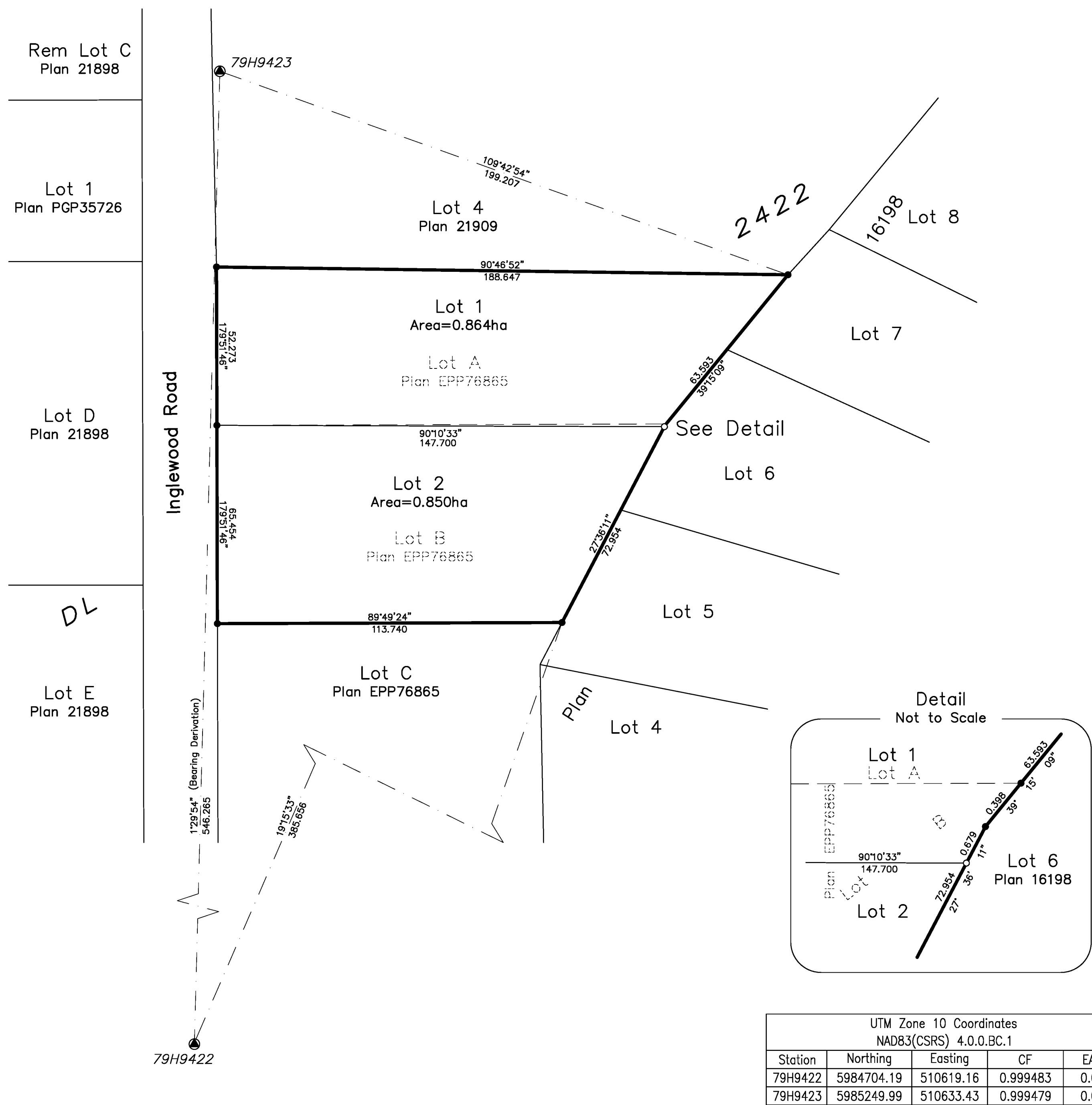


Prince George  
203-1300 1st Ave.  
Prince George, BC V2L 2Y3  
250.640.2287

Smithers  
3750 1st Ave. PO Box 536  
Smithers, BC V0J 2N0  
250.847.3808

www.HBHLandSurveying.com

HBH File No. PUR1901-S



UTM Zone 10 Coordinates NAD83(CSRS) 4.0.0.BC.1				
Station	Northing	Easting	CF	EAA
79H9422	5984704.19	510619.16	0.999483	0.09
79H9423	5985249.99	510633.43	0.999479	0.09