

# STATUTORY RIGHT OF WAY PLAN

PLAN EPP90555

Over Part of Lot A District Lot 2611 Cariboo District Plan 21294.

Pursuant to Section 113 of the Land Title Act.  
For the purpose of overhead electrical utility.

Integrated Survey Area No. 39 Prince George, BC NAD83 (CSRS) 4.0.0.BC.1

BCGS 93G.097

SCALE:

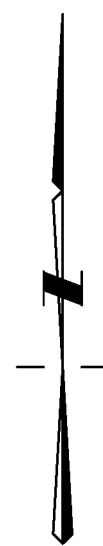


The intended plot size of this plan is 560mm in width by 432mm in height (C size) when plotted at a scale of 1:500.

Grid bearings are derived from observations between geodetic control monuments 85H1165 and 85H1224 and are referred to the central meridian of UTM Zone 10 North.

The UTM coordinates and estimated absolute accuracy achieved are derived from the mascot published coordinates and standard deviations for geodetic control monuments 85H1165 and 85H1224.

This plan shows horizontal ground-level distances, unless otherwise specified. To compute grid distances, multiply ground-level distances by the average combined factor of 0.9995101. The average combined factor has been determined from geodetic control monuments 85H1165 and 85H1224.



LEGEND:

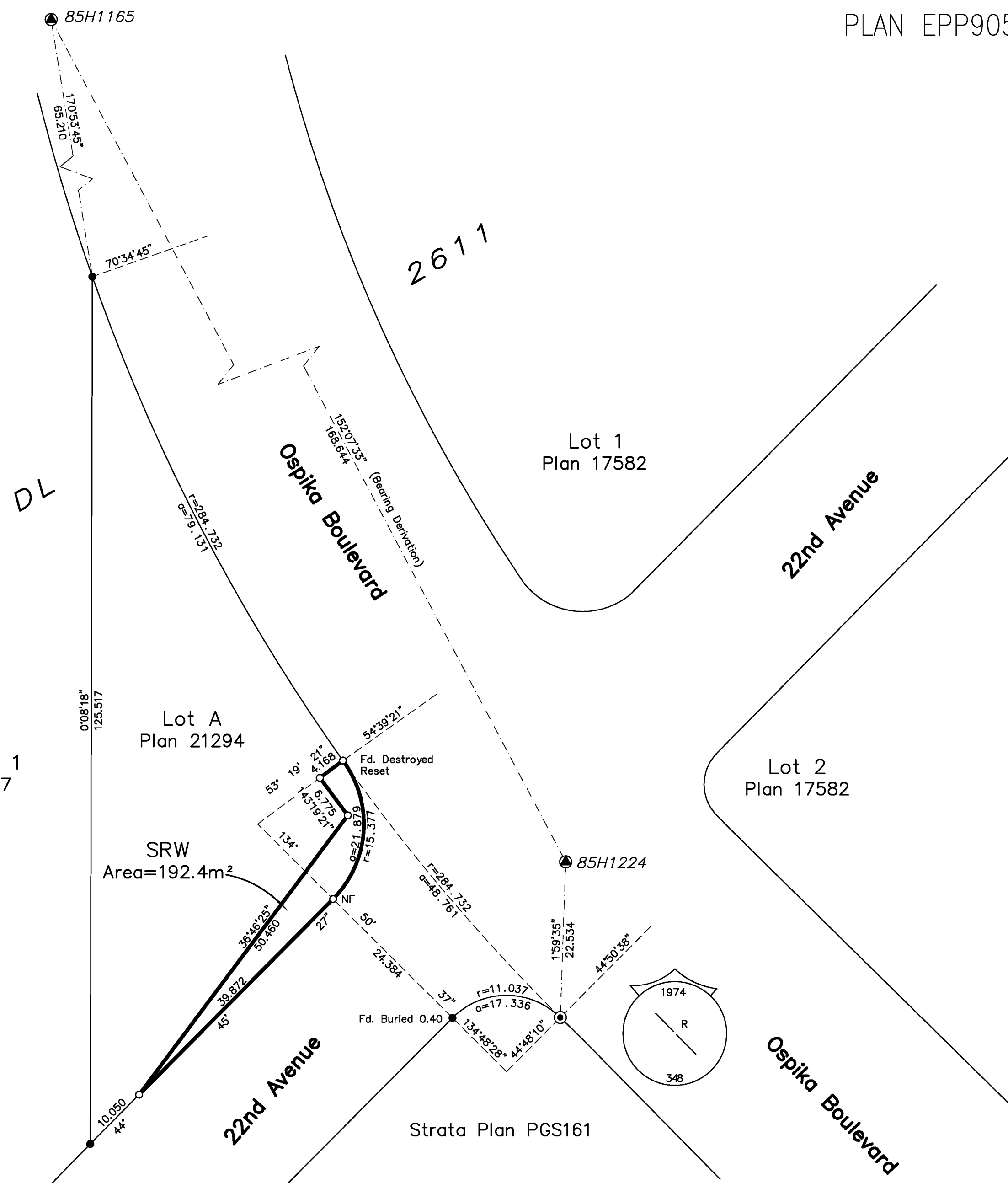
Symbols		Description
●	○	Control Monument
●	○	Standard Iron Post
●	○	Standard Concrete Post
CF		Combined Factor
EAA		Estimated Absolute Accuracy

UTM Zone 10 Coordinates NAD83(CSRS) 4.0.0.BC.1				
Station	Northing	Easting	CF	EAA
85H1224	5972652.98	513370.64	0.9995101	0.09
85H1165	5972801.99	513291.83	0.9995102	0.09

Rem Lot 1  
Plan 9467

Lot A  
Plan 21294

SRW  
Area=192.4m<sup>2</sup>



This plan lies within the Regional District of Fraser-Fort George.

The field survey represented by this plan was completed on the 14th day of May, 2019.

Darren Kent, BCLS 904



Prince George  
203-1300 1st Ave.  
Prince George, BC V2L 2Y3  
250.640.2287

Smithers  
3750 1st Ave. PO Box 536  
Smithers, BC V0J 2N0  
250.847.3808

www.HBHLandSurveying.com

HBH File No. CPG1903-SRW