

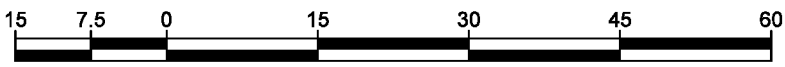
STATUTORY RIGHT OF WAY PLAN OVER PART OF LOT 108, DISTRICT LOT 4377, CARIBOO DISTRICT, PLAN 1329.

PLAN EPP90553

PURSUANT TO SECTION 113 OF THE LAND TITLE ACT.
FOR THE PURPOSE OF OVERHEAD ELECTRICAL UTILITY.

INTEGRATED SURVEY AREA No. 39 PRINCE GEORGE, BC NAD83 (CSRS) 4.0.0.BC.1

BCGS 93G.097



THE INTENDED PLOT SIZE OF THIS PLAN IS 432mm IN WIDTH BY 560mm IN HEIGHT (C SIZE) WHEN PLOTTED AT A SCALE OF 1:750.

GRID BEARINGS ARE DERIVED FROM OBSERVATIONS BETWEEN GEODETIC CONTROL MONUMENTS 86H1568 AND 86H1570 AND ARE REFERRED TO THE CENTRAL MERIDIAN OF UTM ZONE 10.

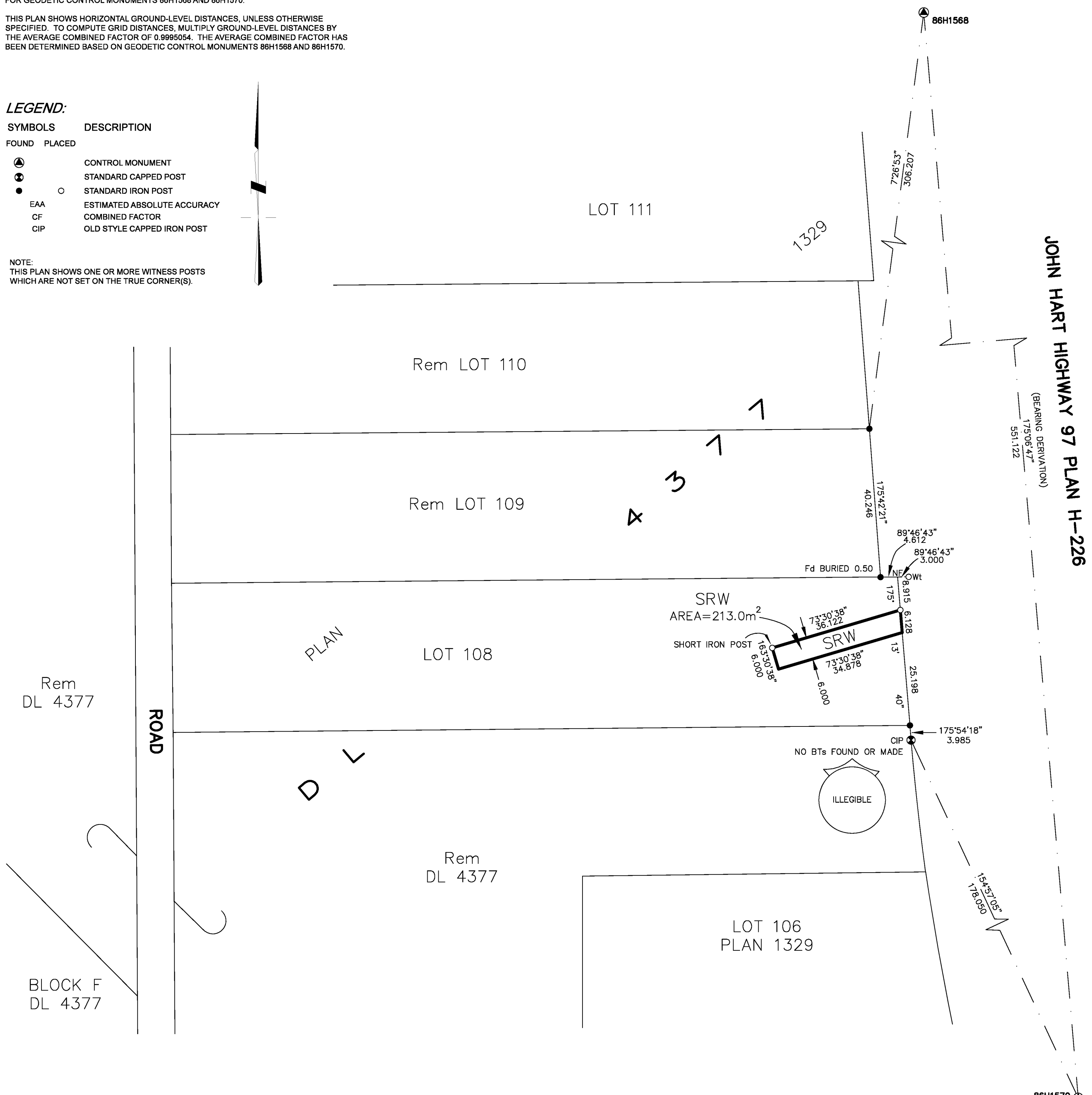
THE UTM COORDINATES AND ESTIMATED ABSOLUTE ACCURACY ACHIEVED ARE DERIVED FROM THE MASCOT PUBLISHED COORDINATES AND STANDARD DEVIATIONS FOR GEODETIC CONTROL MONUMENTS 86H1568 AND 86H1570.

THIS PLAN SHOWS HORIZONTAL GROUND-LEVEL DISTANCES, UNLESS OTHERWISE SPECIFIED. TO COMPUTE GRID DISTANCES, MULTIPLY GROUND-LEVEL DISTANCES BY THE AVERAGE COMBINED FACTOR OF 0.9995054. THE AVERAGE COMBINED FACTOR HAS BEEN DETERMINED BASED ON GEODETIC CONTROL MONUMENTS 86H1568 AND 86H1570.

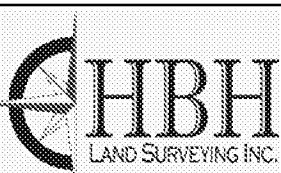
LEGEND:

SYMBOLS		DESCRIPTION
FOUND	PLACED	
⊙	⊙	CONTROL MONUMENT
⊗	⊗	STANDARD CAPPED POST
●	○	STANDARD IRON POST
EAA		ESTIMATED ABSOLUTE ACCURACY
CF		COMBINED FACTOR
CIP		OLD STYLE CAPPED IRON POST

NOTE:
THIS PLAN SHOWS ONE OR MORE WITNESS POSTS WHICH ARE NOT SET ON THE TRUE CORNER(S).



HBH FILE No. BCH1901



PRINCE GEORGE, BC
PHONE: (250) 640-2287
SMITHERS, BC
PHONE: (250) 847-3808

BCLS@HBHLandSurveying.ca

UTM ZONE 10 COORDINATES NAD83(CSRS) 4.0.0.BC.1				
STATION (GCM)	NORTHING	EASTING	CF	EAA
86H1568	5977239.52	515692.72	0.9995056	0.10
86H1570	5976690.67	515739.84	0.9995052	0.09

THIS PLAN IS PREPARED AS THE OFFICIAL PLAN OF THE LANDS SHOWN HEREON FOR THE SURVEYOR GENERAL.

THE FIELD SURVEY REPRESENTED BY THIS PLAN WAS COMPLETED ON THE 13TH DAY OF FEBRUARY, 2019.
DARREN KENT, BCLS 904

THIS PLAN LIES WITHIN THE REGIONAL DISTRICT OF FRASER-FORT GEORGE.