

REFERENCE PLAN OF:
 1: CLOSED ROAD AS SHOWN
 ON PLAN EPP90466;
 2: LOT 25, PLAN 16573;
 BOTH IN DISTRICT LOT 7634,
 CARIBOO DISTRICT

PURSUANT TO SECTION 100(1)(b) OF THE
 LAND TITLE ACT.

INTEGRATED SURVEY AREA No. 39 PRINCE GEORGE, BC,
 NAD83 (CSRS) 4.0.0.BC.1

BCGS 93G.097



THE INTENDED PLOT SIZE OF THIS PLAN IS 560mm IN WIDTH BY 432mm IN
 HEIGHT (C SIZE) WHEN PLOTTED AT A SCALE OF 1:500.

ALL DISTANCES ARE IN METRES AND DECIMALS THEREOF.

GRID BEARINGS ARE DERIVED FROM DIFFERENTIAL DUAL FREQUENCY
 GNSS OBSERVATIONS AND ARE REFERRED TO THE CENTRAL MERIDIAN OF
 UTM ZONE 10 (123° WEST LONGITUDE)

THE UTM COORDINATES AND ESTIMATED HORIZONTAL POSITIONAL
 ACCURACY ACHIEVED ARE DERIVED FROM DUAL FREQUENCY GNSS
 OBSERVATIONS PROCESSED USING NATURAL RESOURCES CANADA'S
 PRECISE POINT POSITIONING SERVICE.

THIS PLAN SHOWS HORIZONTAL GROUND-LEVEL DISTANCES, UNLESS
 OTHERWISE SPECIFIED. TO COMPUTE GRID DISTANCES, MULTIPLY
 GROUND-LEVEL DISTANCES BY THE AVERAGE COMBINED FACTOR OF
 0.99951047. THE AVERAGE COMBINED FACTOR HAS BEEN DETERMINED
 BASED ON AN ELLIPSOIDAL ELEVATION OF 586.6 METRES.

NOTE:
 THIS PLAN SHOWS ONE OR MORE WITNESS POSTS
 WHICH ARE NOT SET ON THE TRUE CORNER(S).

LEGEND

SYMBOLS	DESCRIPTION
FOUND	PLACED
	CONTROL MONUMENT
	STANDARD IRON POST
	TRAVERSE HUB
	STANDARD CONCRETE POST
CSF	COMBINED SCALE FACTOR
EHPA	ESTIMATED HORIZONTAL POSITIONAL ACCURACY
Rem.	REMAINDER
BLK	BLOCK
BTs	BEARING TREES

THE FIELD SURVEY REPRESENTED BY THIS PLAN WAS
 COMPLETED ON THE 13TH DAY OF FEBRUARY, 2019.

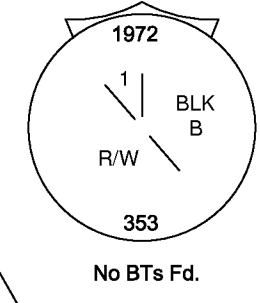
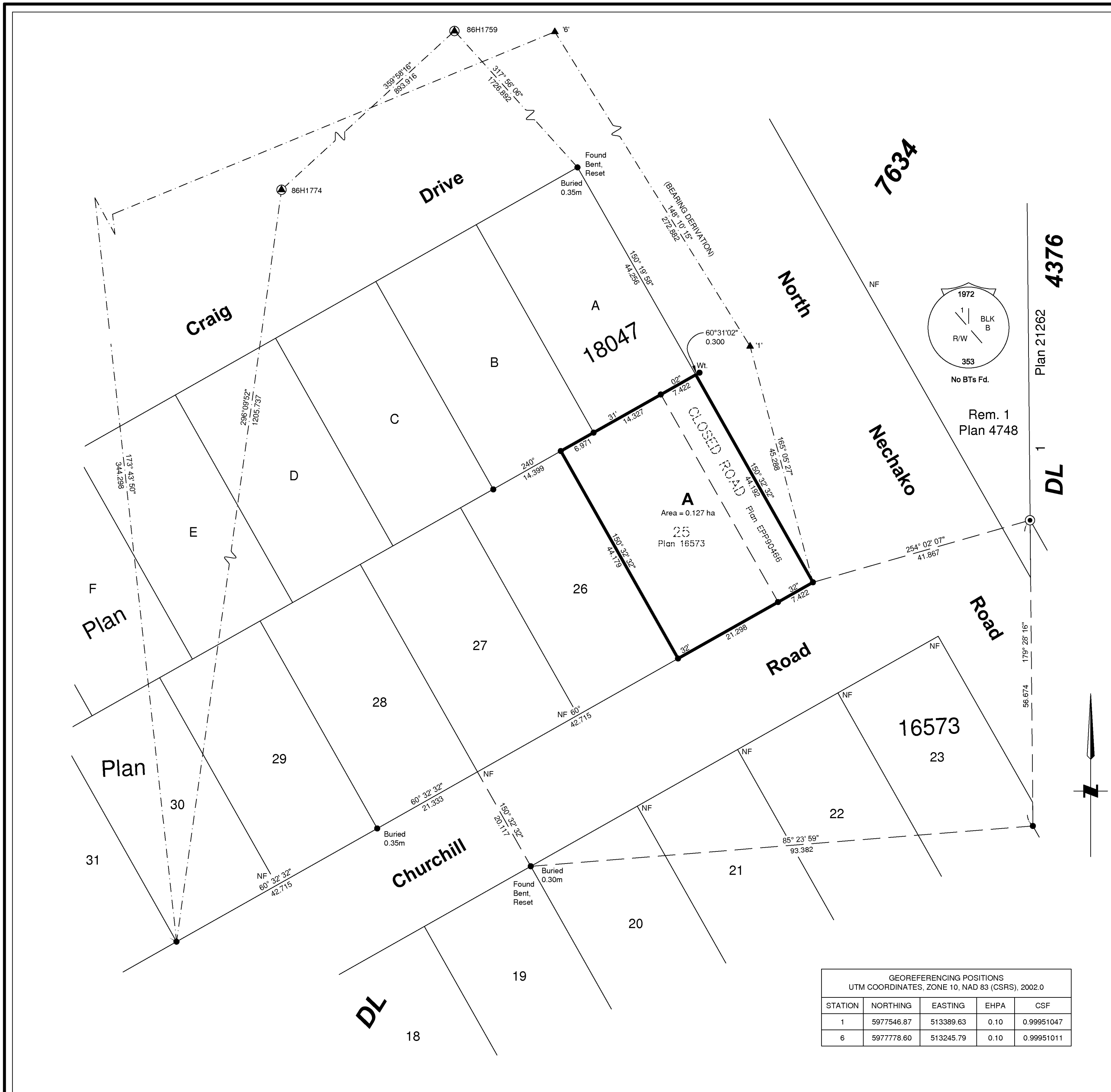
ALBERT KOEHLER, BCLS 974

THIS PLAN LIES WITHIN THE REGIONAL DISTRICT OF FRASER-FORT GEORGE.

GEOREFERENCING POSITIONS UTM COORDINATES, ZONE 10, NAD 83 (CSRS), 2002.0				
STATION	NORTHING	EASTING	EHPA	CSF
1	5977546.87	513389.63	0.10	0.99951047
6	5977778.60	513245.79	0.10	0.99951011

FILE: 19010-CONS

KOEHLER LAND SURVEYING INC.
 1898 LYON STREET SOUTH
 PRINCE GEORGE, BC V2N 1T3
 TEL: (250) 614-9703



4376
 Plan 21262
 DL
 1