

# EXPLANATORY PLAN OF EASEMENT OVER PART OF LOTS 12 TO 15, INCLUSIVE, DISTRICT LOT 4050, CARIBOO DISTRICT, PLAN EPP89775

PLAN EPP89777

PURSUANT TO SECTION 99(1)(e) OF THE LAND TITLE ACT.

INTEGRATED SURVEY AREA No. 39 PRINCE GEORGE, BC, NAD83 (CSRS) 4.0.0.BC.1

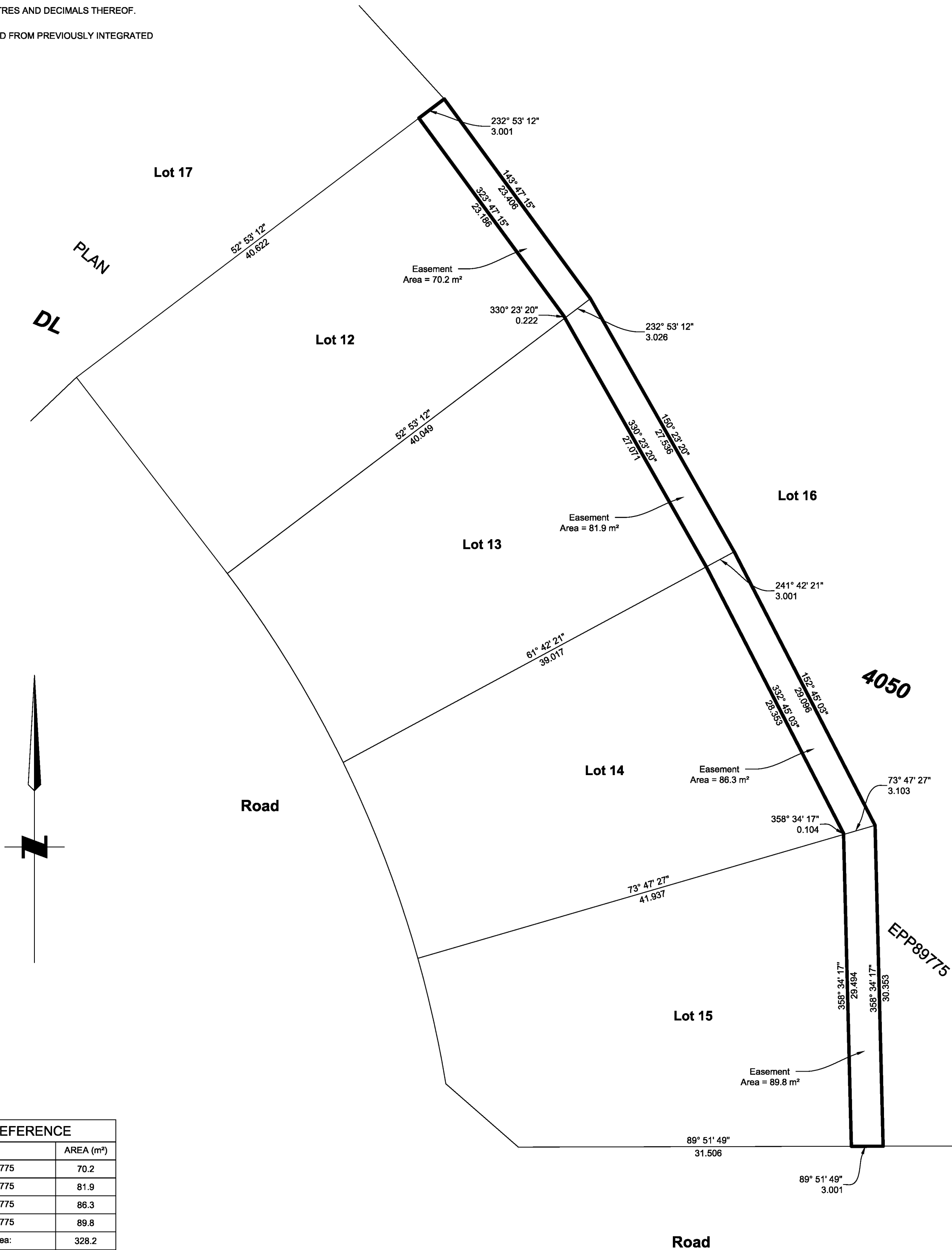
BCGS 93G.096



THE INTENDED PLOT SIZE OF THIS PLAN IS 432mm IN WIDTH BY 560mm IN HEIGHT (C SIZE) WHEN PLOTTED AT A SCALE OF 1:300.

ALL DISTANCES ARE IN METRES AND DECIMALS THEREOF.

GRID BEARING ARE DERIVED FROM PREVIOUSLY INTEGRATED PLAN EPP89775.



BOOK OF REFERENCE	
DESCRIPTION	AREA (m²)
Lot 12, Plan EPP89775	70.2
Lot 13, Plan EPP89775	81.9
Lot 14, Plan EPP89775	86.3
Lot 15, Plan EPP89775	89.8
<b>Total Easement Area:</b>	<b>328.2</b>

THIS PLAN IS BASED ON THE FOLLOWING LAND TITLE AND SURVEY  
AUTHORITY OF BC RECORDS:  
PLAN EPP89775

ALBERT KOEHLER, BCLS 974  
22ND DAY OF JULY, 2019

THIS PLAN LIES WITHIN THE REGIONAL DISTRICT OF FRASER-FORT GEORGE.

FILE: 18122-EAS

**KOEHLER LAND SURVEYING INC.**  
1698 LYON STREET SOUTH  
PRINCE GEORGE, BC V2N 1T3  
TEL: (250) 614-9703