

REFERENCE PLAN OF ROAD DEDICATION OF PART OF THE EAST 1/2 OF THE NORTHWEST 1/4 OF DISTRICT LOT 633, CARIBOO DISTRICT EXCEPT PLAN 22491.

PLAN EPP89436

PURSUANT TO SECTION 107 OF THE LAND TITLE ACT.

THIS PLAN LIES WITHIN INTEGRATED SURVEY AREA No. 39 PRINCE GEORGE, BC, NAD83 (CSRS) 4.0.0.BC.1

BCGS 93G.097



THE INTENDED PLOT SIZE OF THIS PLAN IS 560mm IN WIDTH BY 432mm IN HEIGHT (C SIZE) WHEN PLOTTED AT A SCALE OF 1:2500.

ALL DISTANCES ARE IN METRES AND DECIMALS THEREOF.

GRID BEARINGS ARE DERIVED FROM OBSERVATIONS BETWEEN GEODETIC CONTROL MONUMENTS 85H1280 AND 85H12550 AND ARE REFERRED TO THE CENTRAL MERIDIAN OF UTM ZONE 10.

THE UTM COORDINATES AND ESTIMATED ABSOLUTE ACCURACY ACHIEVED ARE DERIVED FROM OBSERVATIONS TO GEODETIC CONTROL MONUMENT 85H1280.

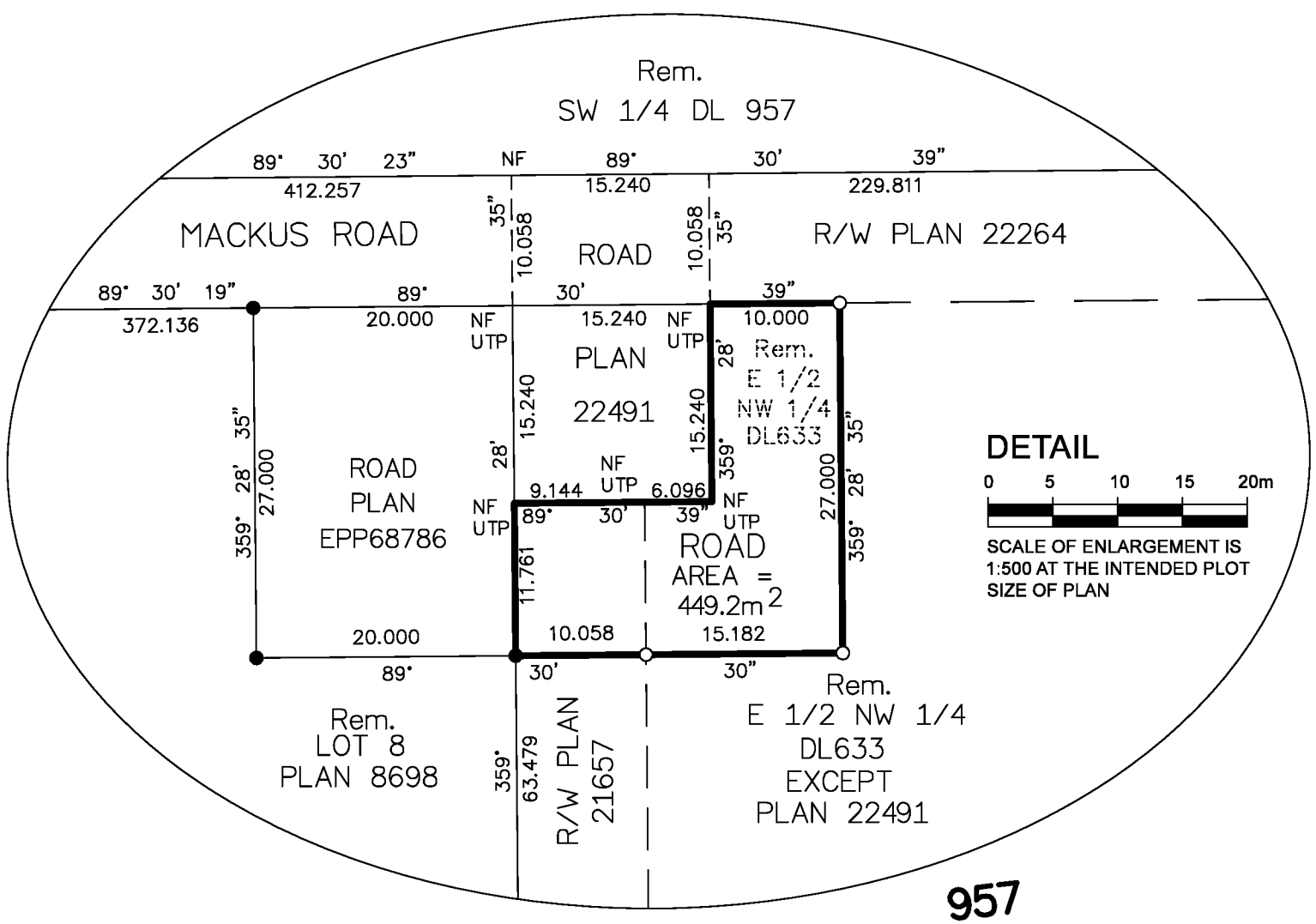
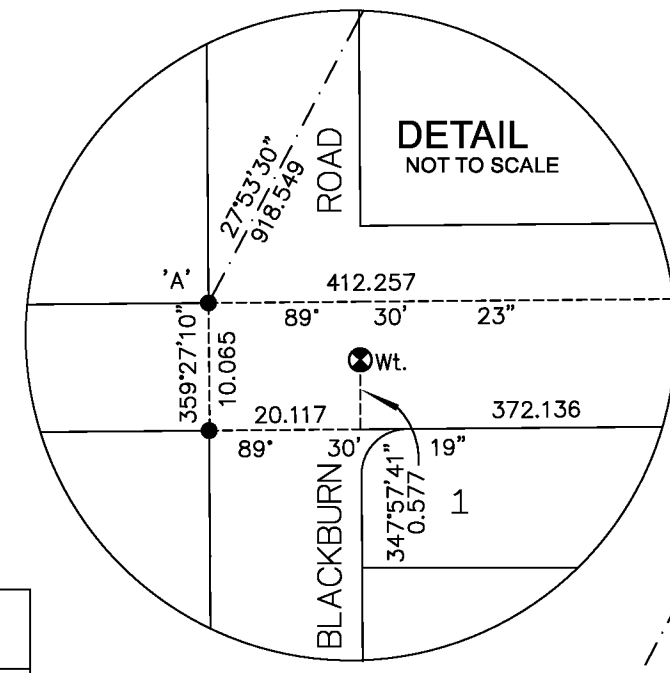
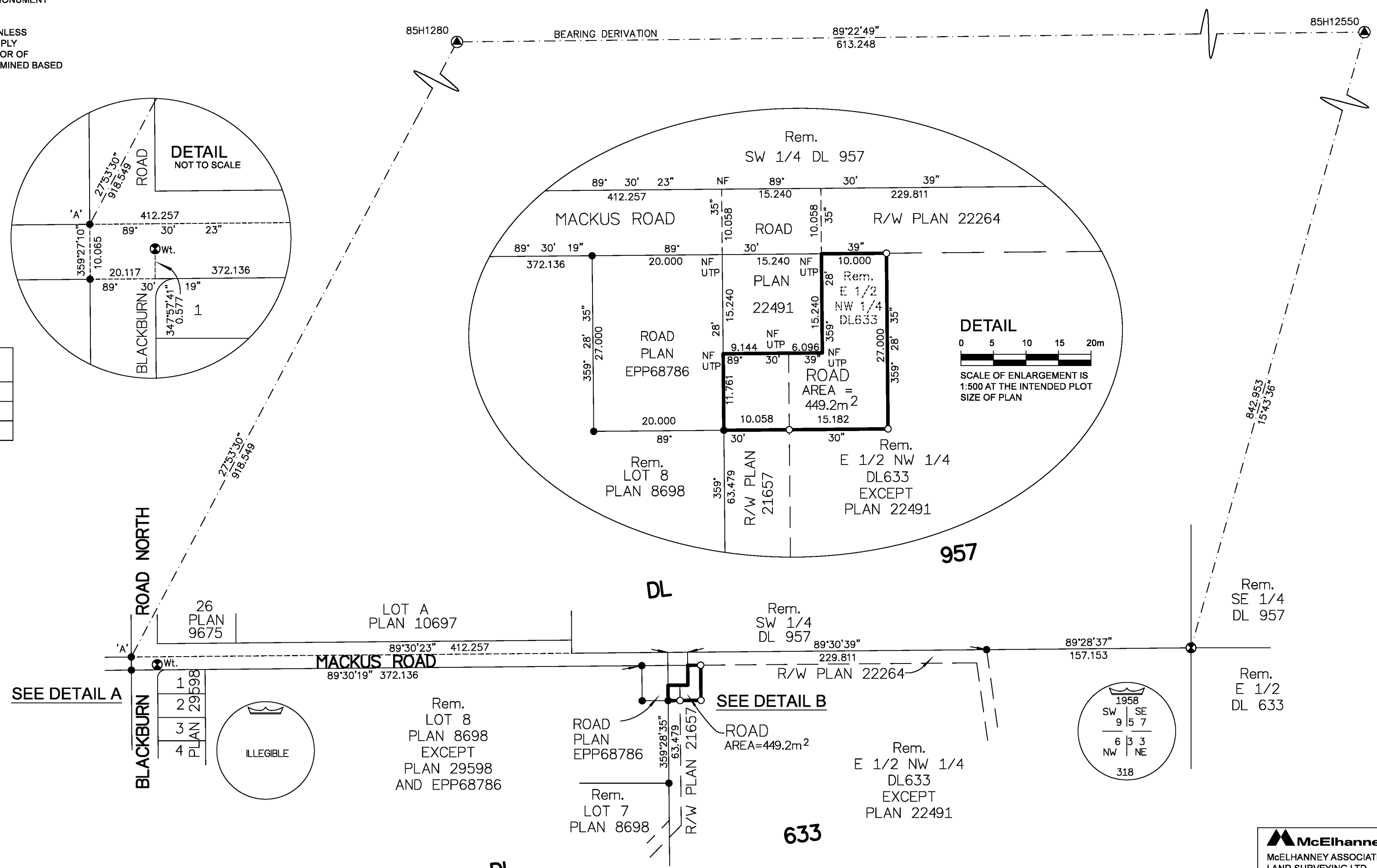
THIS PLAN SHOWS HORIZONTAL GROUND-LEVEL DISTANCES UNLESS OTHERWISE SPECIFIED. TO COMPUTE GRID DISTANCES, MULTIPLY GROUND-LEVEL DISTANCES BY THE AVERAGE COMBINED FACTOR OF 0.9995039. THE AVERAGE COMBINED FACTOR HAS BEEN DETERMINED BASED ON GEODETIC CONTROL MONUMENTS 85H1280 AND 85H12550.

NOTE:
THIS PLAN SHOWS ONE OR MORE WITNESS POSTS WHICH ARE NOT SET ON THE TRUE CORNER(S).

LEGEND

SYMBOLS		DESCRIPTION
FOUND	PLACED	
		CONTROL MONUMENT
		STANDARD CAPPED POST
		STANDARD IRON POST
		UNSUITABLE TO POST
		COMBINED SCALE FACTOR
		ESTIMATED ABSOLUTE ACCURACY

GEOREFERENCING POSITIONS UTM COORDINATES, ZONE 10, NAD 83 (CSRS), 4.0.0.BC.1				
STATION	NORTHING	EASTING	EAA	CSF
Fd.IP'A	5973881.76	523564.66	0.10m	0.9995047
Fd.CP	5973888.84	524378.69	0.10m	0.9995038



THE FIELD SURVEY REPRESENTED BY THIS PLAN WAS COMPLETED ON THE 2ND DAY OF JANUARY, 2019.
SHAUNA C. GOERTZEN, BCLS 798

THIS PLAN LIES WITHIN THE REGIONAL DISTRICT OF FRASER-FORT GEORGE

McElhanney
McELHANNEY ASSOCIATES
LAND SURVEYING LTD.
Suite 12
556 North Nechako Road
Prince George BC
Canada V2K 1A1
Tel 250 561 2229
File No. 2341-6520-RD2

Filed PG EPP89436 EPP89436 154-706-9657 RCVD:2019-03-18 ROST:2019-03-22 03:02 Prince George, City of