

SUBDIVISION PLAN OF PART OF DISTRICT LOT 9263, EXCEPT PLANS 12846, 16592, PGP35513 AND EPP24510, CARIBOO DISTRICT

PURSUANT TO SECTION 67 OF THE LAND TITLE ACT.

INTEGRATED SURVEY AREA No. 39 PRINCE GEORGE, BC, NAD83 (CSRS) 4.0.0.BC.1

BCGS 93G.086



THE INTENDED PLOT SIZE OF THIS PLAN IS 560mm IN WIDTH BY 432mm IN HEIGHT (C SIZE) WHEN PLOTTED AT A SCALE OF 1:2500.

ALL DISTANCES ARE IN METRES AND DECIMALS THEREOF.

GRID BEARINGS ARE DERIVED FROM DIFFERENTIAL DUAL FREQUENCY GNSS OBSERVATIONS AND ARE REFERRED TO THE CENTRAL MERIDIAN OF UTM ZONE 10 (123° WEST LONGITUDE)

THE UTM COORDINATES AND ESTIMATED HORIZONTAL POSITIONAL ACCURACY ACHIEVED ARE DERIVED FROM DUAL FREQUENCY GNSS OBSERVATIONS PROCESSED USING NATURAL RESOURCES CANADA'S PRECISE POINT POSITIONING SERVICE. THIS PLAN SHOWS HORIZONTAL GROUND-LEVEL DISTANCES, UNLESS OTHERWISE SPECIFIED. TO COMPUTE GRID DISTANCES, MULTIPLY GROUND-LEVEL DISTANCES BY THE AVERAGE COMBINED FACTOR OF 0.9994825. THE AVERAGE COMBINED FACTOR HAS BEEN DETERMINED BASED ON AN ELLIPSOIDAL ELEVATION OF 764.1 METRES

NOTE:
THIS PLAN SHOWS ONE OR MORE WITNESS POSTS WHICH ARE NOT SET ON THE TRUE CORNER(S). SOME POSTS ARE EXAGGERATED FOR CLARITY. BEARINGS TO BEARING TREES ARE MAGNETIC.

THIS PLAN LIES WITHIN THE JURISDICTION OF THE APPROVING OFFICER FOR THE CITY OF PRINCE GEORGE.

CPG FILE NO.: SD100572

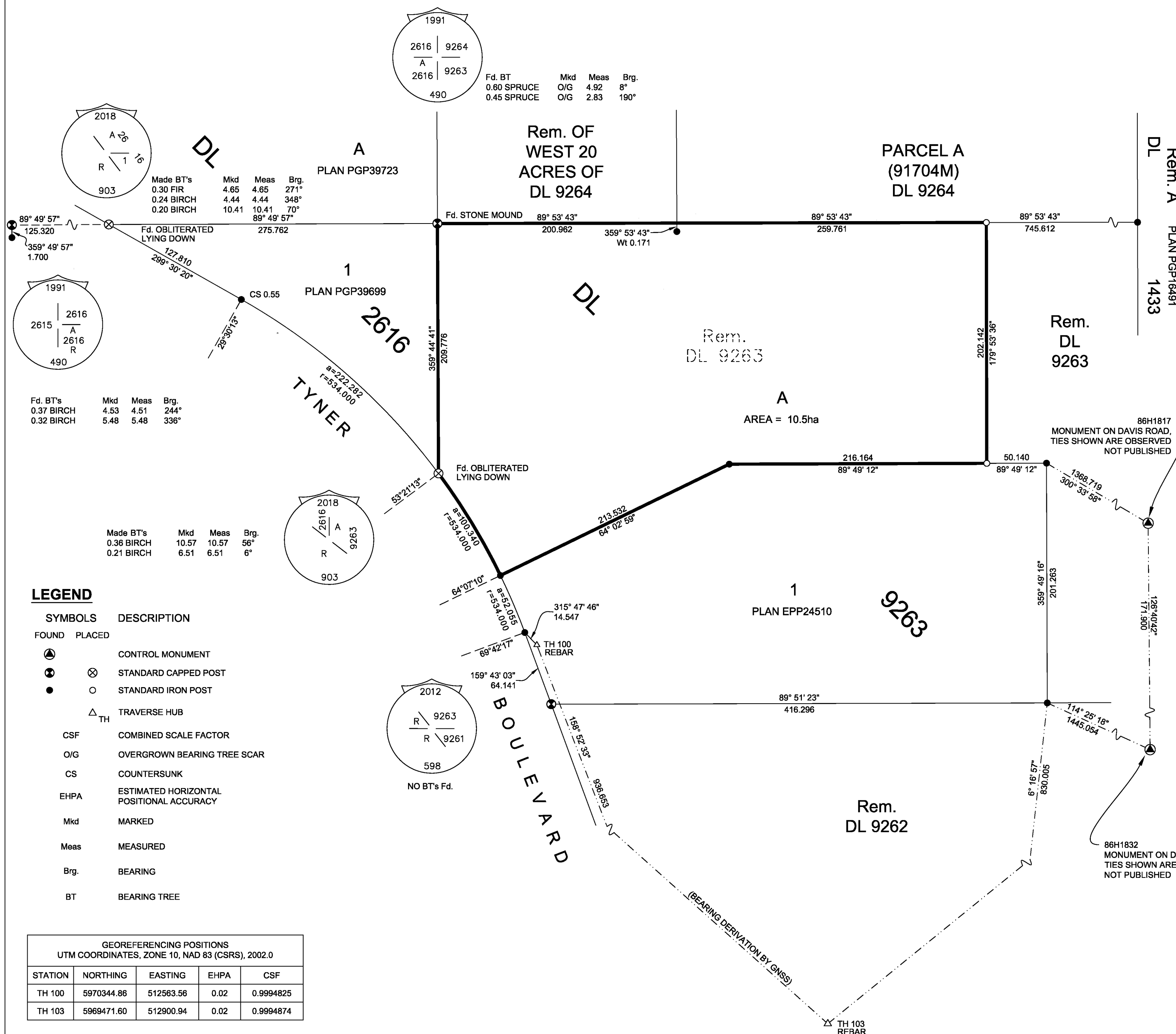
THE FIELD SURVEY REPRESENTED BY THIS PLAN WAS COMPLETED ON THE 20th DAY OF DECEMBER, 2018

SCOTT A. MAGUIRE, BCLS 903

THIS PLAN LIES WITHIN THE REGIONAL DISTRICT OF FRASER-FORT GEORGE.

FILE: 18083-SUB2-R1

KOHLER LAND SURVEYING INC.
1898 LYON STREET SOUTH
PRINCE GEORGE, BC V2N 1T3
TEL: (250) 614-9703



Fd. BT	Mkd	Meas	Brg.
0.60 SPRUCE	O/G	4.92	8°
0.45 SPRUCE	O/G	2.83	190°

Made BT's	Mkd	Meas	Brg.
0.30 FIR	4.65	4.65	271°
0.24 BIRCH	4.44	4.44	348°
0.20 BIRCH	10.41	10.41	70°
			89° 49' 57"

Fd. BT's	Mkd	Meas	Brg.
0.37 BIRCH	4.53	4.51	244°
0.32 BIRCH	5.48	5.48	336°

Made BT's	Mkd	Meas	Brg.
0.36 BIRCH	10.57	10.57	56°
0.21 BIRCH	6.51	6.51	6°

LEGEND

- | SYMBOLS | DESCRIPTION |
|-----------------|--|
| FOUND | PLACED |
| ⊙ | ⊗ |
| ● | ○ |
| △ _{TH} | |
| CSF | COMBINED SCALE FACTOR |
| O/G | OVERGROWN BEARING TREE SCAR |
| CS | COUNTERSUNK |
| EHPA | ESTIMATED HORIZONTAL POSITIONAL ACCURACY |
| Mkd | MARKED |
| Meas | MEASURED |
| Brg. | BEARING |
| BT | BEARING TREE |

GEOREFERENCING POSITIONS				
UTM COORDINATES, ZONE 10, NAD 83 (CSRS), 2002.0				
STATION	NORTHING	EASTING	EHPA	CSF
TH 100	5970344.86	512563.56	0.02	0.9994825
TH 103	5969471.60	512900.94	0.02	0.9994874