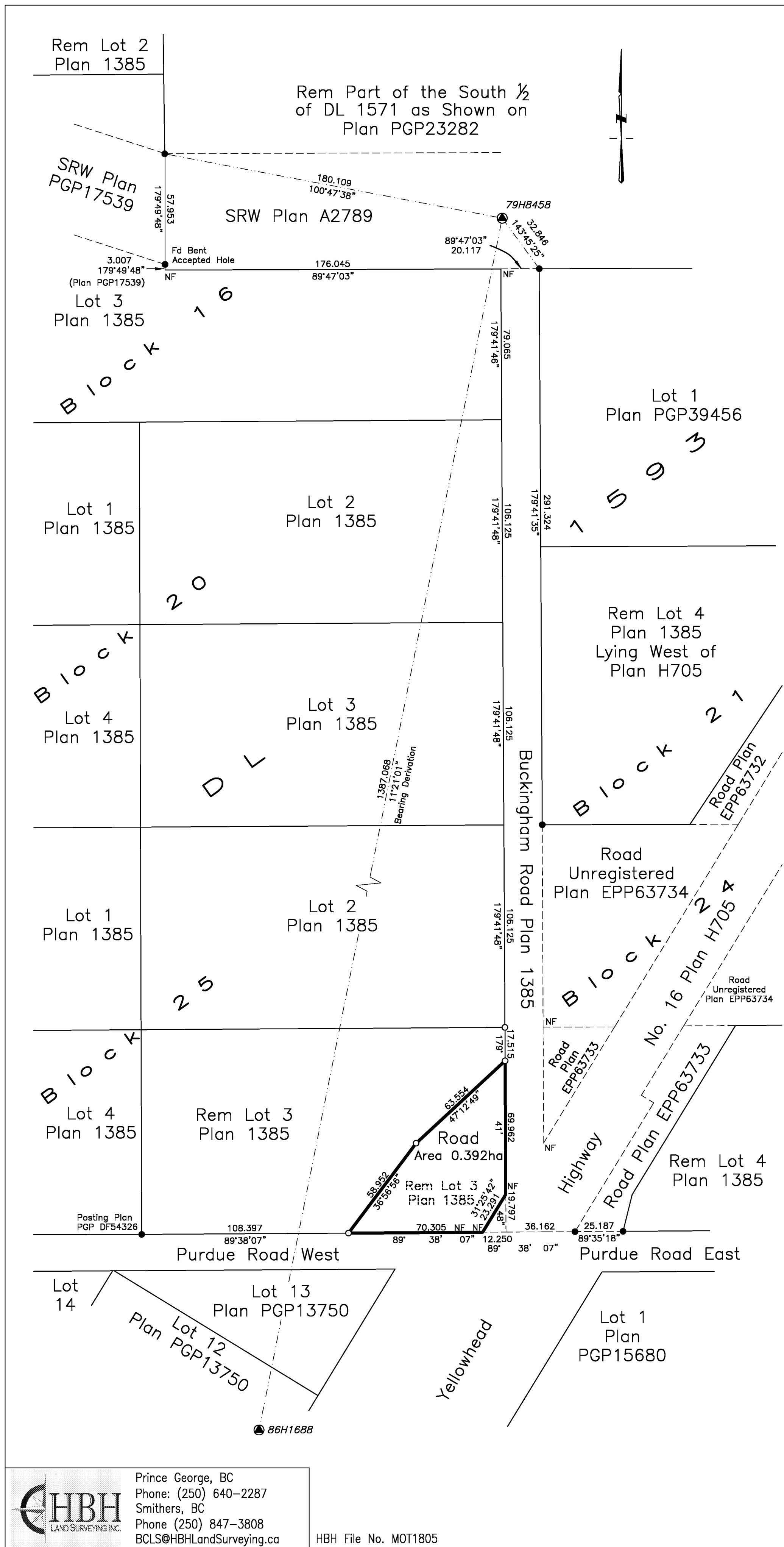


PLAN EPP89073



REFERENCE PLAN

Of Part of Lot 3 Block 25 District Lot 1593 Cariboo District Plan 1385 Except Plan H705

Pursuant to Section 107 of the Land Title Act.

Integrated Survey Area No. 39 Prince George, BC NAD83(CSRS) 4.0.0.BC.1

BCGS 93G.086

BOOK OF REFERENCE

Description	Area
Area Within Lot 3 Plan 1385	0.392ha
Total Area This Plan	0.392ha

SCALE:



The intended plot size of this plan is 432mm in width by 560mm in height (C size) when plotted at a scale of 1:1500.

LEGEND:

Grid bearings are derived from differential carrier phase GNSS observations between Geodetic Control Monuments 86H1688 and 79H8458.

The UTM coordinates and estimated horizontal positional accuracy have been derived from Mascot Published coordinates and standard deviations for Geodetic Control Monuments 86H1688 and 79H8458.

This plan shows horizontal ground-level distances, unless otherwise specified. To compute grid distances, multiply ground-level distances by the average combined factor of 0.999487 which has been derived from Geodetic Control Monument 79H8458.

- Denotes standard iron post found
- Denotes standard iron post placed
- ◎ Denotes control monument
- CF Denotes 'combined factor'
- EAA Denotes 'Estimated Absolute Accuracy'
- No. Denotes 'Number'

UTM COORDINATES:

NAD 83 (CSRS) 4.0.0.BC.1, Zone 10				
Station	Northing	Easting	CF	EAA
86H1688	5964657.18	510474.54	0.999482	0.10
79H8458	5966016.33	510747.38	0.999487	0.10

This plan lies within the Regional District of Fraser-Fort George.

The field survey represented by this plan was completed on the 5th day of December, 2018.

Gina MP Hidber, BCLS 871

HBH
LAND SURVEYING INC.
Prince George, BC
Phone: (250) 640-2287
Smithers, BC
Phone (250) 847-3808
BCLS@HBHlandSurveying.ca

HBH File No. MOT1805