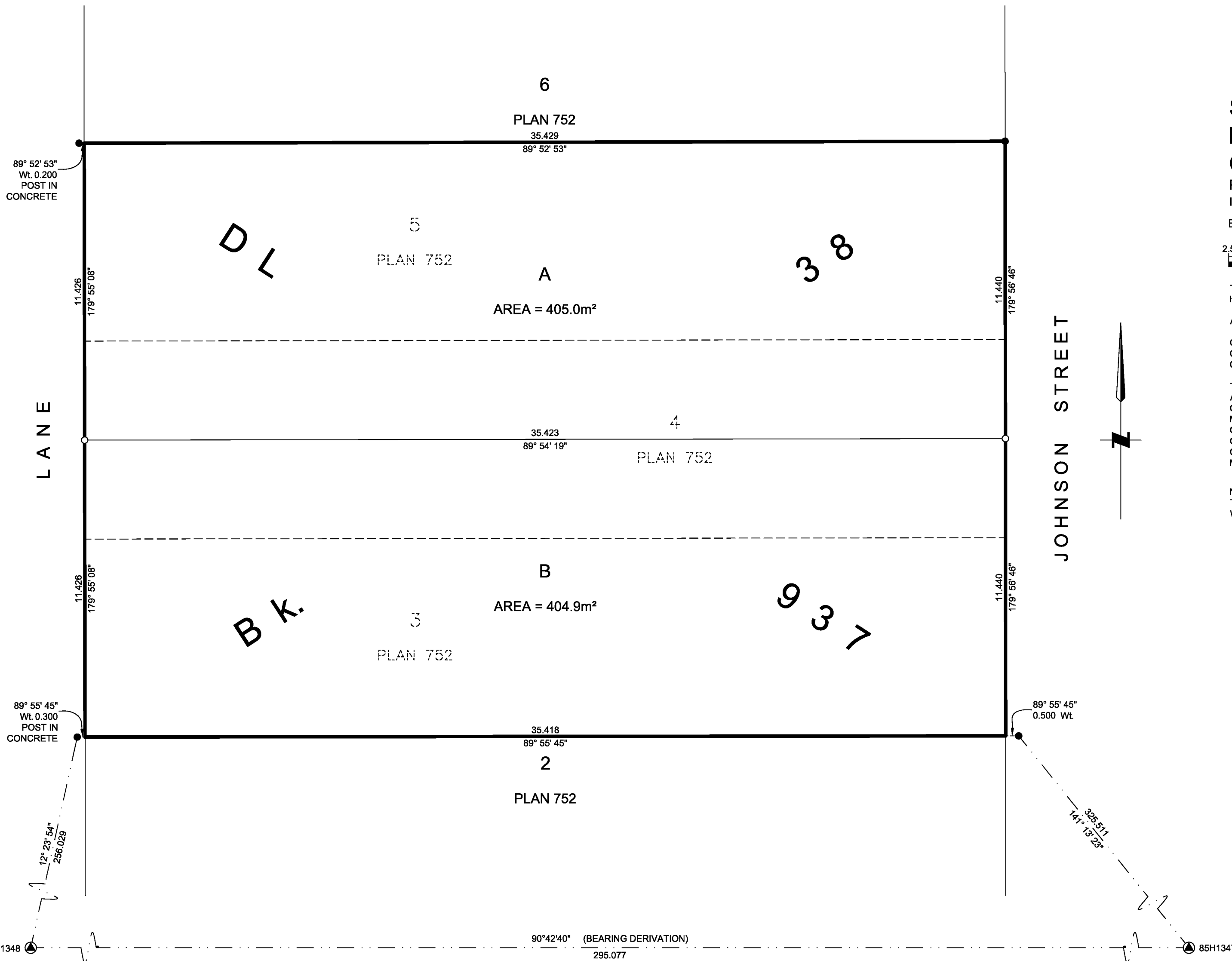


PLAN EPP88219



**SUBDIVISION PLAN OF LOTS 3, 4, AND 5,  
BLOCK 38, DISTRICT LOT 937,  
CARIBOO DISTRICT, PLAN 752.**  
PURSUANT TO SECTION 67 OF THE LAND TITLE ACT  
INTEGRATED SURVEY AREA No. 39 PRINCE GEORGE, BC, NAD83 (CSRS) 4.0.0.BC.1  
BCGS 93G.097



THE INTENDED PLOT SIZE OF THIS PLAN IS 560mm IN WIDTH BY 432mm IN HEIGHT (C SIZE) WHEN PLOTTED AT A SCALE OF 1:125.

ALL DISTANCES ARE IN METRES AND DECIMALS THEREOF.

GRID BEARINGS ARE DERIVED FROM OBSERVATIONS BETWEEN GEODETIC CONTROL MONUMENTS 85H1348 AND 85H1347 AND ARE REFERRED TO THE CENTRAL MERIDIAN OF UTM ZONE 10 NORTH.

THE UTM COORDINATES AND ESTIMATED HORIZONTAL POSITIONAL ACCURACY ACHIEVED HAVE BEEN DERIVED FROM MASCOT PUBLISHED COORDINATES AND STANDARD DEVIATIONS FOR GEODETIC CONTROL MONUMENTS 85H1348 AND 85H1347. THIS PLAN SHOWS HORIZONTAL GROUND-LEVEL DISTANCES UNLESS OTHERWISE SPECIFIED. TO COMPUTE GRID DISTANCES, MULTIPLY GROUND-LEVEL DISTANCES BY THE AVERAGE COMBINED FACTOR OF 0.9995108 WHICH HAS BEEN DERIVED FROM CONTROL MONUMENT 85H1348.

NOTE:  
THIS PLAN SHOWS ONE OR MORE WITNESS POSTS WHICH ARE NOT SET ON THE TRUE CORNER(S).

**LEGEND**

SYMBOLS		DESCRIPTION
FOUND	PLACED	
		CONTROL MONUMENT
		STANDARD IRON POST
		COMBINED SCALE FACTOR
		ESTIMATED HORIZONTAL POSITIONAL ACCURACY

GEOREFERENCING POSITIONS UTM COORDINATES, ZONE 10, NAD 83 (CSRS), 4.0.0.BC.1				
STATION	NORTHING	EASTING	EHPA	CSF
85H1347	5974373.79	514664.86	0.09	0.9995110
85H1348	5974377.45	514369.95	0.09	0.9995108

INSPECTED UNDER THE LAND TITLE ACT ON 2ND DAY OF OCTOBER, 2019

THIS PLAN LIES WITHIN THE JURISDICTION OF THE APPROVING OFFICER FOR THE CITY OF PRINCE GEORGE.

CPG FILE NO.: SD100519

THE FIELD SURVEY REPRESENTED BY THIS PLAN WAS COMPLETED ON THE 14th DAY OF NOVEMBER, 2018

ALBERT KOEHLER, BCLS No. 974

THIS PLAN LIES WITHIN THE REGIONAL DISTRICT OF FRASER-FORT GEORGE.

FILE: 18112-SD

**KOEHLER LAND SURVEYING INC.**  
1698 LYON STREET SOUTH  
PRINCE GEORGE, BC V2N 1T3  
TEL: (250) 614-9703