

**SUBDIVISION PLAN OF PART OF LOT 4, PLAN BCP22263,
EXCEPT PLAN EPP52840, LOT A, PLAN 32316, AND
CLOSED ROAD, PLAN EPP88077,
ALL IN DISTRICT LOT 2003, CARIBOO DISTRICT.**

PLAN EPP88078

PURSUANT TO SECTION 67 OF THE LAND TITLE ACT

THIS PLAN LIES WITHIN INTEGRATED SURVEY AREA No. 39 PRINCE GEORGE, BC, NAD83 (CSRS) 4.0.0.BC.1

BCGS 93G.087



THE INTENDED PLOT SIZE OF THIS PLAN IS 560mm IN WIDTH BY 432mm IN HEIGHT (C SIZE) WHEN PLOTTED AT A SCALE OF 1:1500.

ALL DISTANCES ARE IN METRES AND DECIMALS THEREOF.

GRID BEARINGS ARE DERIVED FROM OBSERVATIONS BETWEEN GEODETIC CONTROL MONUMENTS 86H1670 AND 86H1817.

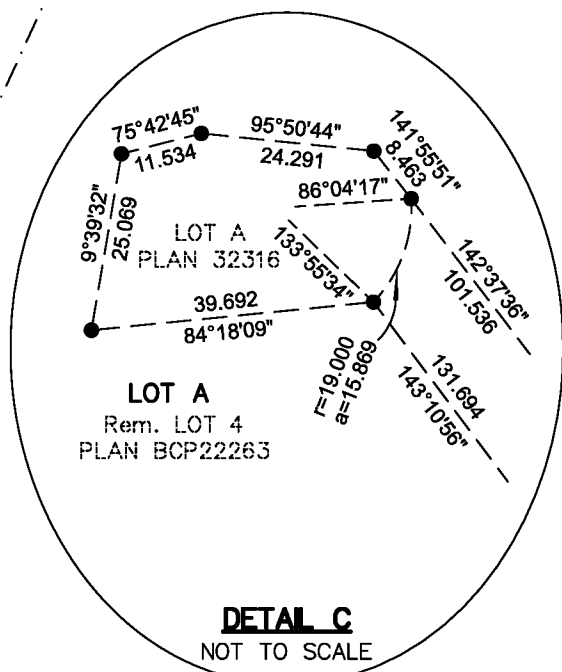
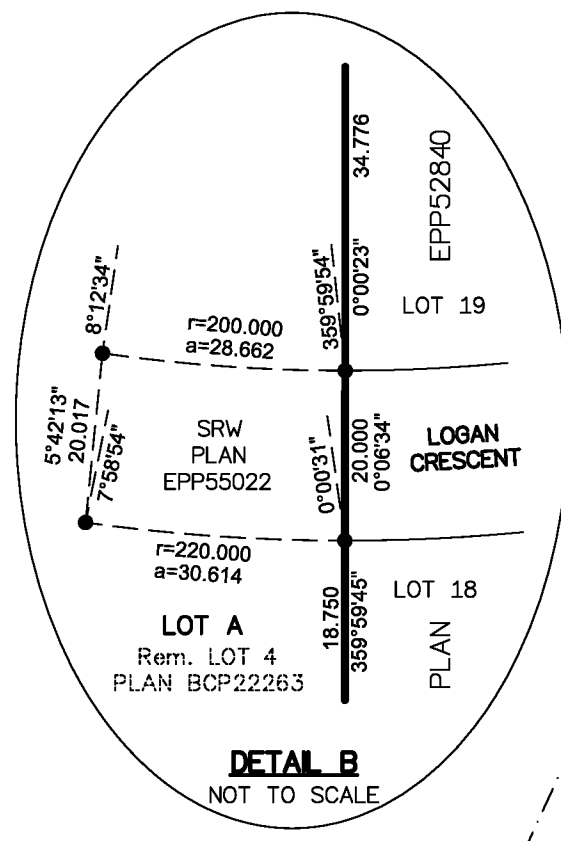
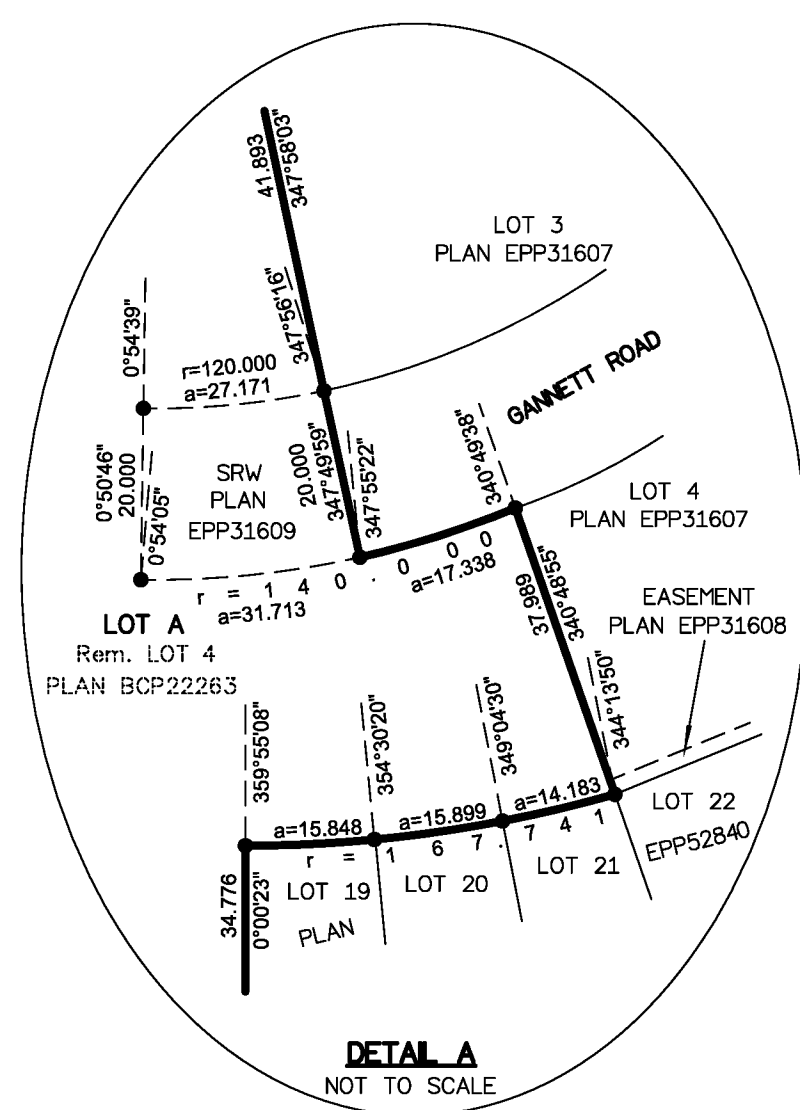
THE UTM COORDINATES AND ESTIMATED ABSOLUTE ACCURACY ACHIEVED ARE DERIVED FROM GNSS OBSERVATIONS TO GEODETIC CONTROL MONUMENT 86H1670.

THIS PLAN SHOWS HORIZONTAL GROUND-LEVEL DISTANCES UNLESS OTHERWISE SPECIFIED. TO COMPUTE GRID DISTANCES, MULTIPLY GROUND-LEVEL DISTANCES BY THE AVERAGE COMBINED FACTOR OF 0.9994974 WHICH HAS BEEN DERIVED FROM GEODETIC CONTROL MONUMENTS 86H1670 AND 86H1817.

LEGEND

SYMBOLS	DESCRIPTION
FOUND PLACED	
▲	CONTROL MONUMENT
● ○	STANDARD IRON POST
CSF	COMBINED SCALE FACTOR
EHPA	ESTIMATED HORIZONTAL POSITIONAL ACCURACY

GEOREFERENCING POSITIONS UTM COORDINATES, ZONE 10, NAD 83 (CSRS), 4.0.0.BC.1				
STATION	NORTHING	EASTING	EHPA	CSF
Pl. IP 'A'	5968997.34	513935.36	0.12	0.9994986
Pl. IP 'B'	5968615.16	513830.53	0.12	0.9994986

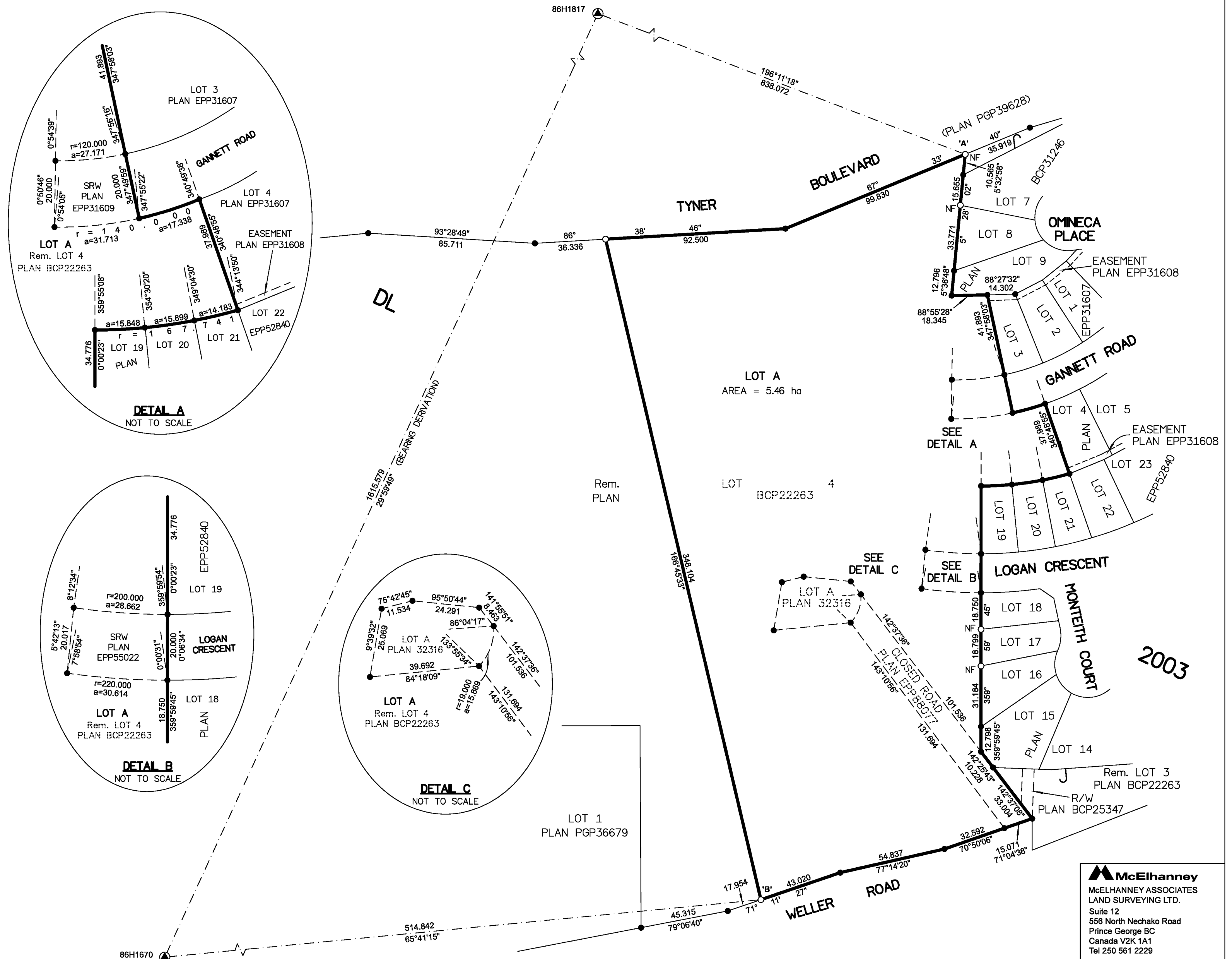


THIS PLAN LIES WITHIN THE JURISDICTION OF THE APPROVING OFFICER FOR THE CITY OF PRINCE GEORGE.

CPG FILE NO. SD100582

THE FIELD SURVEY REPRESENTED BY THIS PLAN WAS COMPLETED ON THE 8th DAY OF NOVEMBER, 2018
SHAUNA C. GOERTZEN, BCLS 798

THIS PLAN LIES WITHIN THE REGIONAL DISTRICT OF FRASER-FORT GEORGE.



McElhanney
McELHANNEY ASSOCIATES
LAND SURVEYING LTD.
Suite 12
556 North Nechako Road
Prince George BC
Canada V2K 1A1
Tel 250 561 2229

File No. 2341-6680-S
CPG File No. SD100582