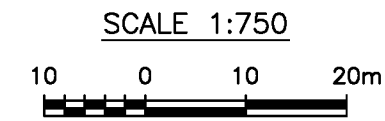


AIRSPACE PLAN OF PART OF
LOT A DL 343 CARIBOO DISTRICT
PLAN EPP87926

PURSUANT TO SECTION 144 OF THE LAND TITLE ACT
BCGS 93 G 097

AIRSPACE PLAN EPP87956



THE INTENDED PLOT SIZE OF THIS PLAN IS 864mm IN WIDTH BY 560mm IN HEIGHT (SHEET SIZE D) WHEN PLOTTED AT A SCALE OF 1:750

DISTANCES ARE HORIZONTAL GROUND LEVEL DISTANCES EXPRESSED IN METRES AND DECIMALS THEREOF UNLESS OTHERWISE SPECIFIED

INTEGRATED SURVEY AREA No. 39, CITY OF PRINCE GEORGE
NAD83 (CSRS) 4.0.0.BC.1
GRID BEARINGS ARE DERIVED FROM OBSERVATIONS BETWEEN GEODETIC CONTROL MONUMENTS 85H1090 AND 85H1341

THIS PLAN SHOWS HORIZONTAL GROUND-LEVEL DISTANCES UNLESS OTHERWISE SPECIFIED TO COMPUTE GRID DISTANCES, MULTIPLY GROUND-LEVEL DISTANCES BY THE AVERAGE COMBINED FACTOR OF 0.9995163 WHICH HAS BEEN DERIVED FROM GEODETIC CONTROL MONUMENT 85H1090
ELEVATIONS ARE GEODETIC DERIVED FROM INTEGRATED SURVEY MONUMENT 85H1090
ELEVATION = 569.501

LEGEND

FOUND	PLACED	DESCRIPTION
●	○	STANDARD IRON POST
⊙	○	CONTROL MONUMENT

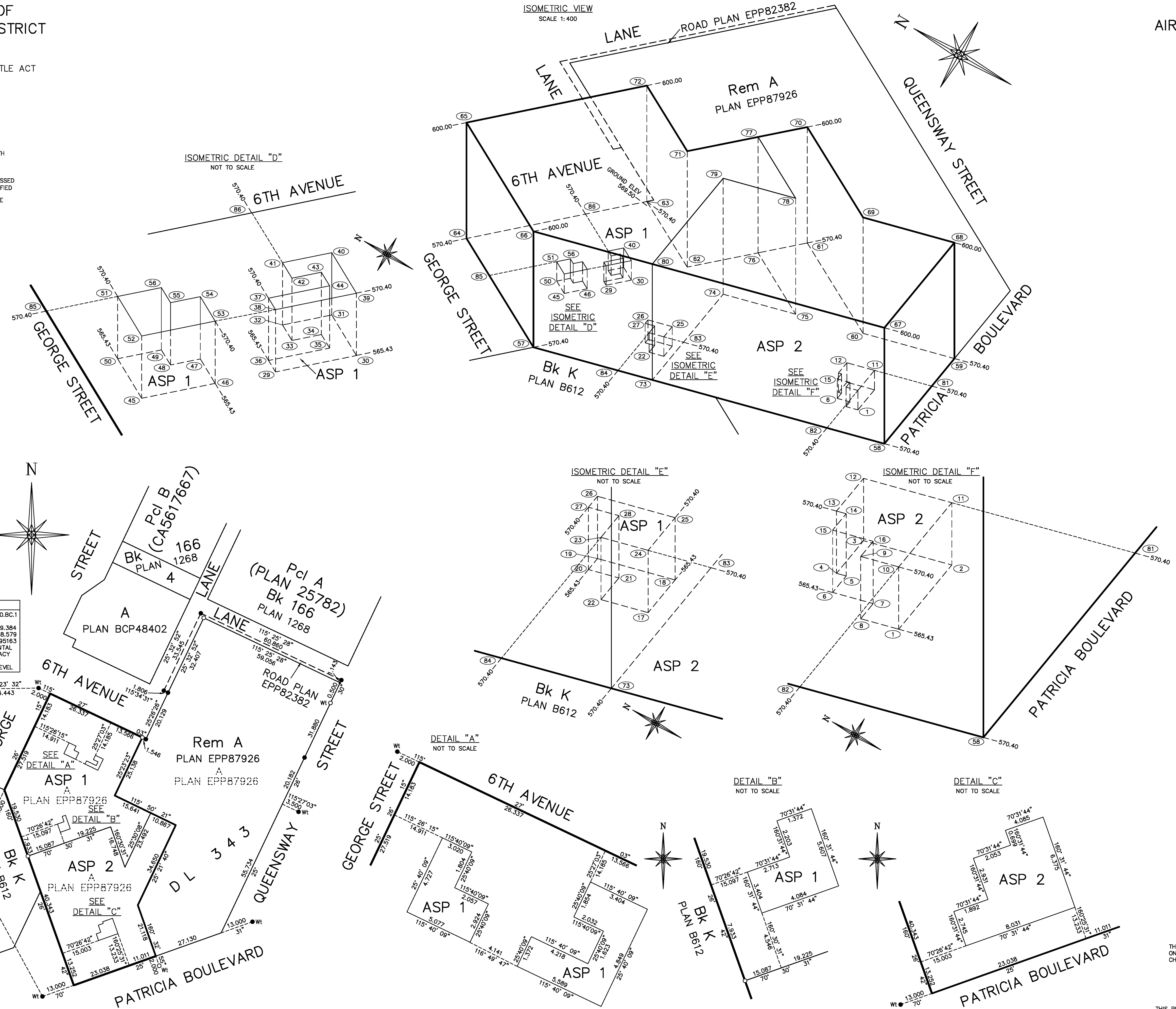
THIS PLAN SHOWS ONE OR MORE WITNESS POSTS WHICH ARE NOT SET ON THE TRUE CORNER(S)

BOOK OF REFERENCE

LOT A, DISTRICT LOT 343
CARIBOO DISTRICT, PLAN 30462

DESCRIPTION	VOLUME
ASP 1	68394 m ³
ASP 2	63788 m ³

85H1341	85H1090
NAD83 (CSRS) 4.0.0.BC.1	NAD83 (CSRS) 4.0.0.BC.1
UTM ZONE 10	UTM ZONE 10
NORTHING 5974115.900	NORTHING 5973999.384
EASTING 516456.265	EASTING 516668.579
POINT CSF 0.9995159	POINT CSF 0.9995163
ESTIMATED HORIZONTAL POSITIONAL ACCURACY IS 0.02 METRES AT 95% CONFIDENCE LEVEL	ESTIMATED HORIZONTAL POSITIONAL ACCURACY IS 0.02 METRES AT 95% CONFIDENCE LEVEL



CORNER NUMBER	NORTHING	EASTING	ELEVATION
1	5973846.675	516800.779	565.43
2	5973849.352	516808.350	565.43
3	5973855.363	516806.225	565.43
4	5973854.000	516802.371	565.43
5	5973853.342	516802.606	565.43
6	5973852.655	516800.663	565.43
7	5973849.894	516801.648	565.43
8	5973849.263	516799.864	565.43
9	5973849.263	516799.864	570.40
10	5973846.675	516800.779	570.40
11	5973849.352	516808.350	570.40
12	5973855.363	516806.225	570.40
13	5973854.000	516802.371	570.40
14	5973853.342	516802.606	570.40
15	5973852.655	516800.663	570.40
16	5973849.894	516801.648	570.40
17	5973849.263	516799.864	565.43
18	5973890.350	516789.694	565.43
19	5973895.637	516787.825	565.43
20	5973895.179	516786.532	565.43
21	5973893.102	516787.266	565.43
22	5973892.198	516784.709	565.43
23	5973892.198	516784.709	570.40
24	5973888.989	516785.843	570.40
25	5973890.350	516789.694	570.40
26	5973895.637	516787.825	570.40
27	5973895.179	516786.532	570.40
28	5973893.102	516787.266	570.40
29	5973915.658	516795.473	565.43
30	5973913.249	516800.516	565.43
31	5973917.625	516802.606	565.43
32	5973919.092	516799.535	565.43
33	5973917.418	516798.736	565.43
34	5973916.543	516800.569	565.43
35	5973915.078	516799.870	565.43
36	5973916.896	516798.064	565.43
37	5973916.896	516796.064	570.40
38	5973915.658	516795.473	570.40
39	5973913.249	516800.516	570.40
40	5973917.625	516802.606	570.40
41	5973919.092	516799.535	570.40
42	5973917.418	516798.736	570.40
43	5973916.543	516800.569	570.40
44	5973915.078	516799.870	570.40
45	5973919.726	516787.201	565.43
46	5973917.527	516791.777	565.43
47	5973920.162	516783.044	565.43
48	5973921.053	516791.189	565.43
49	5973922.679	516791.971	565.43
50	5973923.987	516789.249	565.43
51	5973923.987	516789.249	570.40
52	5973919.726	516787.201	570.40
53	5973917.527	516791.777	570.40
54	5973920.162	516783.044	570.40
55	5973921.053	516791.189	570.40
56	5973922.679	516791.971	570.40
57	5973905.548	516763.946	570.40
58	5973929.166	516801.569	570.40
59	5973840.573	516823.158	570.40
60	5973860.488	516816.125	570.40
61	5973891.797	516830.967	570.40
62	5973903.350	516807.109	570.40
63	5973926.060	516817.888	570.40
64	5973943.208	516781.858	570.40
65	5973943.208	516781.858	600.00
66	5973905.548	516763.946	600.00
67	5973829.166	516791.077	600.00
68	5973840.573	516823.158	600.00
69	5973860.488	516816.125	600.00
70	5973891.797	516830.967	600.00
71	5973903.350	516807.109	600.00
72	5973926.060	516817.888	600.00
73	5973929.166	516801.569	600.00
74	5973891.118	516805.483	570.40
75	5973875.330	516811.072	570.40
76	5973896.533	516821.186	570.40
77	5973896.533	516821.186	600.00
78	5973875.330	516811.072	600.00
79	5973891.118	516805.483	600.00
80	5973879.669	516773.138	600.00
81	5973836.884	516812.783	570.40
82	5973841.654	516786.641	570.40
83	5973884.703	516787.360	570.40
84	5973887.145	516770.483	570.40
85	5973903.350	516775.783	570.40
86	5973931.895	516805.628	570.40

THE FIELD SURVEY REPRESENTED BY THIS PLAN WAS COMPLETED ON THE 8TH DAY OF NOVEMBER, 2018
CHRISTOPHER JOHN DE HAAN, BCLS (#799)

CAD FILE: T04167-AIRSPACE.DWG (NOV 8/18)

THIS PLAN LIES WITHIN THE FRASER-FORT GEORGE REGIONAL DISTRICT

UNDERHILL & UNDERHILL
PROFESSIONAL LAND SURVEYORS
KAMLOOPS, B.C. V2C 2C7
TEL. (250) 372-8835