

PLAN EPP87840

REFERENCE PLAN TO ACCOMPANY BYLAW NO. 8983 OF THE CITY OF PRINCE GEORGE, HIGHWAY CLOSURE AND DEDICATION REMOVAL OF A PORTION OF OSPIKA BLVD AS SHOWN ON PLAN PGP30304 DISTRICT LOT 1433 CARIBOO DISTRICT

PURSUANT TO SECTION 120 OF THE LAND TITLE ACT AND SECTION 40 OF THE COMMUNITY CHARTER
 INTEGRATED SURVEY AREA No. 39 PRINCE GEORGE, BC NAD83(CSRS) 4.0.0.BC.1

BOOK OF REFERENCE:

| Description: | Area: |
|--|----------------------|
| CLOSED ROAD DEDICATED ON PLAN PGP30304 | 112.6 m ² |
| Total: | 112.6 m ² |

BCGS 93G.087



THE INTENDED PLOT SIZE OF THIS PLAN IS 560mm IN WIDTH BY 432mm IN HEIGHT (C SIZE) WHEN PLOTTED AT A SCALE OF 1:300

GRID BEARINGS ARE DERIVED FROM OBSERVATIONS BETWEEN GEODETIC CONTROL MONUMENTS 86H1838 AND 86H1753.

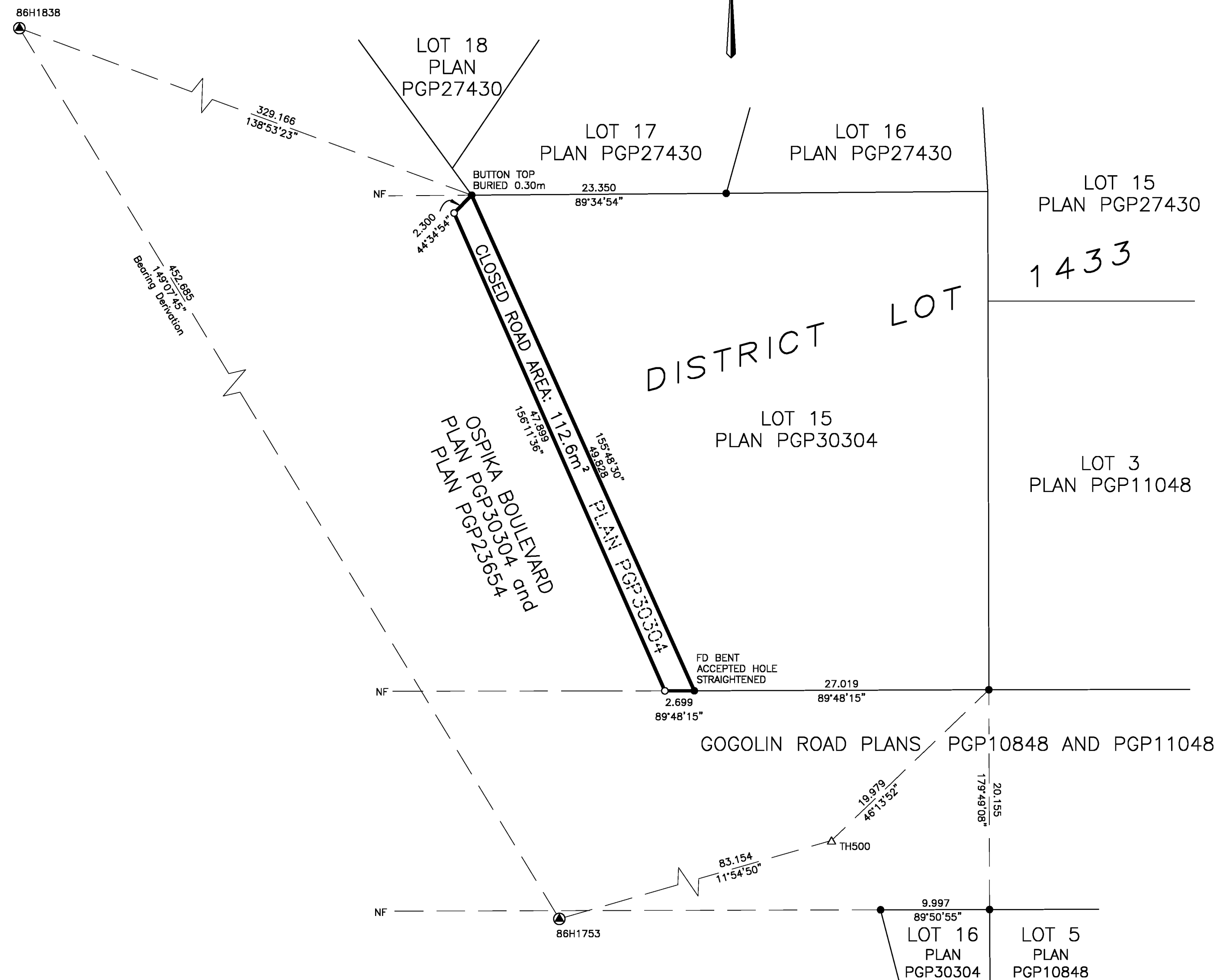
THE UTM COORDINATES AND ESTIMATED HORIZONTAL POSITIONAL ACCURACY ACHIEVED HAVE BEEN DERIVED FROM MASCOT PUBLISHED COORDINATES AND STANDARD DEVIATIONS FOR GEODETIC CONTROL MONUMENTS 86H1838 AND 86H1753.

THIS PLAN SHOWS HORIZONTAL GROUND-LEVEL DISTANCES UNLESS OTHERWISE SPECIFIED. TO COMPUTE GRID DISTANCES, MULTIPLY GROUND-LEVEL DISTANCES BY THE AVERAGE COMBINED FACTOR OF 0.999508 WHICH HAS BEEN DERIVED FROM CONTROL MONUMENT 86H1753.

LEGEND:

| SYMBOLS | DESCRIPTION |
|--------------|--|
| FOUND PLACED | |
| ● ○ | CONTROL MONUMENT |
| ○ | STANDARD IRON POST |
| △ | TRAVERSE HUB |
| CF | COMBINED FACTOR |
| EHPA | ESTIMATED HORIZONTAL POSITIONAL ACCURACY |

| UTM ZONE 10 COORDINATES NAD83(CSRS) 4.0.0.BC.1 | | | | |
|---|------------|-----------|----------|------|
| STATION (GCM) | NORTHING | EASTING | CF | EHPA |
| 86H1753 | 5970304.62 | 514358.28 | 0.999508 | 0.10 |
| 86H1838 | 5970692.93 | 514126.08 | 0.999511 | 0.10 |
| TH500 | 5970385.94 | 514375.44 | 0.999511 | 0.10 |



HBH FILE No. CPG1804

HBH LAND SURVEYING INC.
 PRINCE GEORGE, BC
 PHONE: (250) 640-2287
 SMITHERS, BC
 PHONE: (250) 847-3808
 BCLS@HBHLandSurveying.ca

THE FIELD SURVEY REPRESENTED BY THIS PLAN WAS COMPLETED ON THE 24th DAY OF OCTOBER, 2018
 GINA MP HIDBER, BCLS 871

THIS PLAN LIES WITHIN THE REGIONAL DISTRICT OF FRASER-FORT GEORGE.
 THIS PLAN LIES WITHIN THE CITY OF PRINCE GEORGE.