

# REFERENCE PLAN OF EASEMENT OVER PART OF LOTS 1 THROUGH 6, INCLUSIVE, DISTRICT LOT 4028, CARIBOO DISTRICT, PLAN EPP66495.

PLAN EPP87816

PURSUANT TO SECTION 99(1)(e) OF THE LAND TITLE ACT FOR EASEMENT PURPOSES

INTEGRATED SURVEY AREA No. 39 PRINCE GEORGE, BC, NAD83 (CSRS) 4.0.0.BC.1 BCGS 93G.097



THE INTENDED PLOT SIZE OF THIS PLAN IS 560 mm IN WIDTH BY 432 mm IN HEIGHT (C SIZE) WHEN PLOTTED AT A SCALE OF 1:500.

ALL DISTANCES ARE IN METRES AND DECIMALS THEREOF.

GRID BEARINGS ARE DERIVED FROM PLAN EPP66495.

THE UTM COORDINATES AND ESTIMATED HORIZONTAL POSITIONAL ACCURACY ACHIEVED HAVE BEEN DERIVED FROM PLAN EPP66495.

THIS PLAN SHOWS HORIZONTAL GROUND-LEVEL DISTANCES UNLESS OTHERWISE SPECIFIED. TO COMPUTE GRID DISTANCES, MULTIPLY GROUND-LEVEL DISTANCES BY THE AVERAGE COMBINED FACTOR OF 0.9994901 WHICH HAS BEEN DERIVED FROM CONTROL MONUMENTS 86H1665 AND 86H1805.

## LEGEND

SYMBOLS	DESCRIPTION
FOUND PLACED	
●	STANDARD IRON POST
CSF	COMBINED SCALE FACTOR
EHPA	ESTIMATED HORIZONTAL POSITIONAL ACCURACY

GEOREFERENCING POSITIONS UTM COORDINATES, ZONE 10, NAD 83 (CSRS), 4.0.0.BC.1				
STATION	NORTHING	EASTING	EHPA	CSF
Fd.IP'A'	5982500.65	514656.45	0.09	0.9994901
Fd.IP'B'	5982397.13	514706.16	0.09	0.9994901

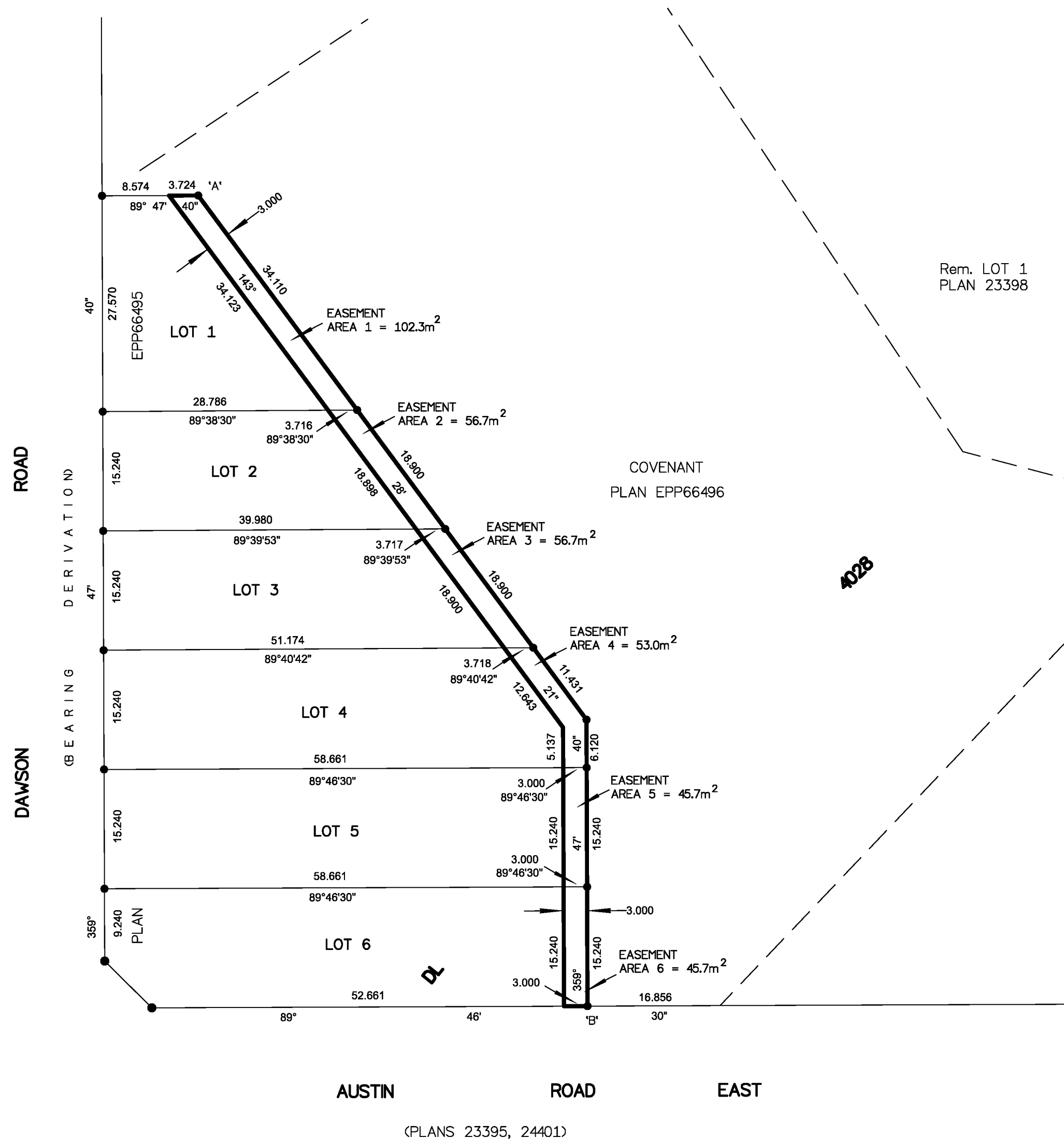


BOOK OF REFERENCE	
DESCRIPTION	AREA (m <sup>2</sup> )
LOT 1 DISTRICT LOT 4028 PLAN EPP66495	AREA 1 = 102.3m <sup>2</sup>
LOT 2 DISTRICT LOT 4028 PLAN EPP66495	AREA 2 = 56.7m <sup>2</sup>
LOT 3 DISTRICT LOT 4028 PLAN EPP66495	AREA 3 = 56.7m <sup>2</sup>
LOT 4 DISTRICT LOT 4028 PLAN EPP66495	AREA 4 = 53.0m <sup>2</sup>
LOT 5 DISTRICT LOT 4028 PLAN EPP66495	AREA 5 = 45.7m <sup>2</sup>
LOT 6 DISTRICT LOT 4028 PLAN EPP66495	AREA 6 = 45.7m <sup>2</sup>
TOTAL AREA = 360.1m <sup>2</sup>	

INSPECTED UNDER THE LAND TITLE ACT ON THE 28th OF OCTOBER, 2018

THE FIELD SURVEY REPRESENTED BY THIS PLAN WAS COMPLETED ON THE 29th DAY OF AUGUST, 2017  
SHAUNA C. GOERTZEN, BCLS 798

THIS PLAN LIES WITHIN THE REGIONAL DISTRICT OF FRASER-FORT GEORGE



**McElhanney**  
McELHANNEY ASSOCIATES  
LAND SURVEYING LTD.  
Suite 12  
556 North Nechako Road  
Prince George BC  
Canada V2K 1A1  
Tel 250 561 2229

File No. 2341-6512-E  
CPG FILE No: SD100526