

SUBDIVISION PLAN OF BLOCKS F AND G, ALL IN DISTRICT LOT 913, CARIBOO DISTRICT.

PLAN EPP87364

THIS PLAN LIES WITHIN INTEGRATED SURVEY AREA
No. 39 PRINCE GEORGE, BC, NAD83 (CSRS) 4.0.0.BC.1

BCGS 93G.087



THE INTENDED PLOT SIZE OF THIS PLAN IS 560mm IN WIDTH BY 432mm IN HEIGHT (C SIZE) WHEN PLOTTED AT A SCALE OF 1:1000.

ALL DISTANCES ARE IN METRES AND DECIMALS THEREOF.

GRID BEARINGS ARE DERIVED FROM OBSERVATIONS BETWEEN GEODETIC CONTROL MONUMENTS 85H1111 AND 85H1113.

THE UTM COORDINATES AND ESTIMATED ABSOLUTE ACCURACY ACHIEVED HAVE BEEN DERIVED FROM MASCOT PUBLISHED COORDINATES AND STANDARD DEVIATIONS FOR GEODETIC CONTROL MONUMENT 85H1111.

THIS PLAN SHOWS HORIZONTAL GROUND-LEVEL DISTANCES UNLESS OTHERWISE SPECIFIED. TO COMPUTE GRID DISTANCES, MULTIPLY GROUND-LEVEL DISTANCES BY THE AVERAGE COMBINED FACTOR OF 0.9995130 WHICH HAS BEEN DERIVED FROM GEODETIC CONTROL MONUMENTS 85H1111 AND 85H1113.

NOTE:
THIS PLAN SHOWS ONE OR MORE WITNESS POSTS WHICH ARE NOT SET ON THE TRUE CORNER(S).
SOME POSTS AND LINES ARE EXAGGERATED FOR CLARITY.

INTERSECTIONS WITH RIGHT OF WAY AND COVENANTS ARE UNSUITABLE TO POST AS THEY ARE WITHIN PAVED AREAS

LEGEND

SYMBOLS	DESCRIPTION
FOUND PLACED	
	CONTROL MONUMENT
	STANDARD CAPPED POST
	STANDARD IRON POST
	LEAD PLUG
	BEARING TREE
	ESTIMATED ABSOLUTE ACCURACY

GEOREFERENCING POSITIONS UTM COORDINATES, ZONE 10, NAD 83 (CSRS), 4.0.0.BC.1			
STATION	NORTHING	EASTING	EAA
Fd. IP 'A'	5971749.98	515382.24	0.10
Fd. IP 'B'	5971746.91	515716.14	0.10

YELLOWHEAD HIGHWAY 16

(PLANS H735, PGP43039, 22207, AND PGP37876)

Rem. N 1/2 DL 913 AND THAT PART INCLUDED IN 99169M

POSTING PLAN EPP97296

EASEMENT PLAN BCP9869

BLOCK E

BLOCK F

COVENANT AREA A PLAN BCP9868

COVENANT AREA B PLAN BCP9868

LOT 28 PLAN

LOT 27

LOTS 26 TO 15

LOT 14 16511

LOT 13

LOT 1

85H1111

357.136

90°56'53" (BEARING DERIVATION)

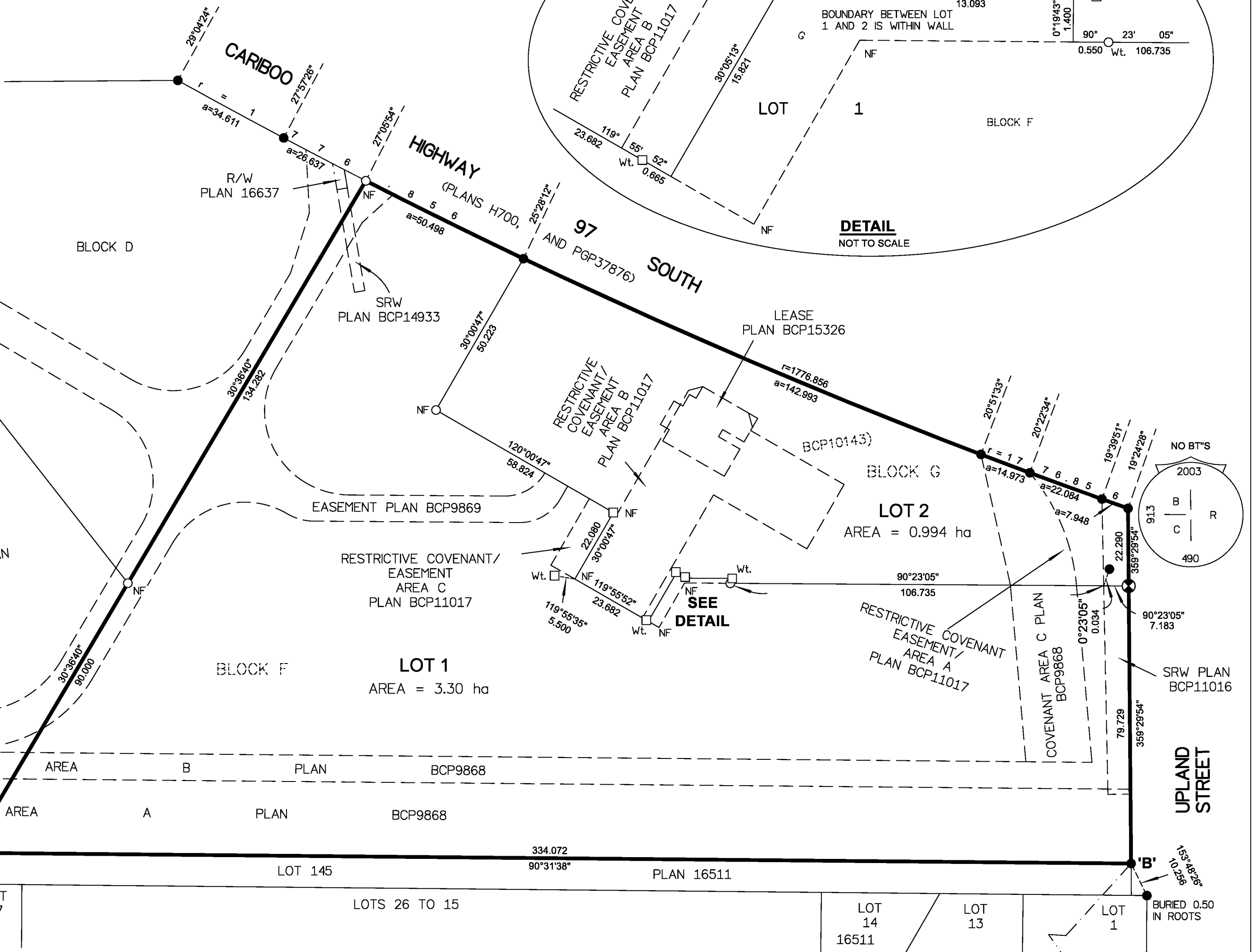
85H1113

THIS PLAN LIES WITHIN THE JURISDICTION OF THE APPROVING OFFICER FOR THE CITY OF PRINCE GEORGE.

CPG FILE NO. SD100625

THE FIELD SURVEY REPRESENTED BY THIS PLAN WAS COMPLETED ON THE 28th DAY OF APRIL, 2020
SHAUNA C. GOERTZEN, BCLS 798

THIS PLAN LIES WITHIN THE REGIONAL DISTRICT OF FRASER-FORT GEORGE.



McElhanney
McELHANNEY ASSOCIATES
LAND SURVEYING LTD.
Suite 12
556 North Nechako Road
Prince George BC
Canada V2K 1A1
Tel 250 561 2229
File No. 6017-2080-S