

SUBDIVISION PLAN OF PART OF LOT 19, DISTRICT LOT 2432, CARIBOO DISTRICT, PLAN 22026.

PLAN EPP87150

PURSUANT TO SECTION 67 OF THE LAND TITLE ACT.

INTEGRATED SURVEY AREA No. 39 PRINCE GEORGE, BC, NAD83 (CSRS) 4.0.0.BC.1

BCGS 93J.007



THE INTENDED PLOT SIZE OF THIS PLAN IS 560mm IN WIDTH BY 432mm IN HEIGHT (C SIZE) WHEN PLOTTED AT A SCALE OF 1:750.

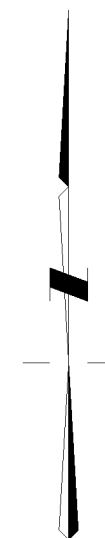
GRID BEARINGS ARE DERIVED FROM DIFFERENTIAL DUAL FREQUENCY GNSS OBSERVATIONS AND ARE REFERRED TO THE CENTRAL MERIDIAN OF UTM ZONE 10.

THE UTM COORDINATES AND ESTIMATED ABSOLUTE ACCURACY ARE DERIVED FROM THE MASCOT PUBLISHED COORDINATES AND STANDARD DEVIATIONS FOR GEODETIC CONTROL MONUMENTS 79H9419 AND 79H9414.

THIS PLAN SHOWS HORIZONTAL GROUND-LEVEL DISTANCES, UNLESS OTHERWISE SPECIFIED. TO COMPUTE GRID DISTANCES, MULTIPLY GROUND-LEVEL DISTANCES BY THE AVERAGE COMBINED FACTOR OF 0.9994879. THE AVERAGE COMBINED FACTOR HAS BEEN DETERMINED BASED ON AN ELLIPSOIDAL ELEVATION OF 730 METRES.

LEGEND:

| FOUND | PLACED | DESCRIPTION |
|-------|--------|-----------------------------|
| ● | ○ | CONTROL MONUMENT |
| ● | ○ | STANDARD IRON POST |
| △ | △ | TRAVERSE HUB |
| CF | | COMBINED FACTOR |
| EAA | | ESTIMATED ABSOLUTE ACCURACY |
| TH | | TRAVERSE HUB |



| UTM ZONE 10 COORDINATES NAD83(CSRS) 4.0.0.BC.1 | | | | |
|---|------------|-----------|-----------|------|
| STATION (TH) | NORTHING | EASTING | CF | EAA |
| TH 1 | 5985384.39 | 513338.03 | 0.9994879 | 0.10 |
| TH 3 | 5985234.84 | 513215.01 | 0.9994865 | 0.10 |

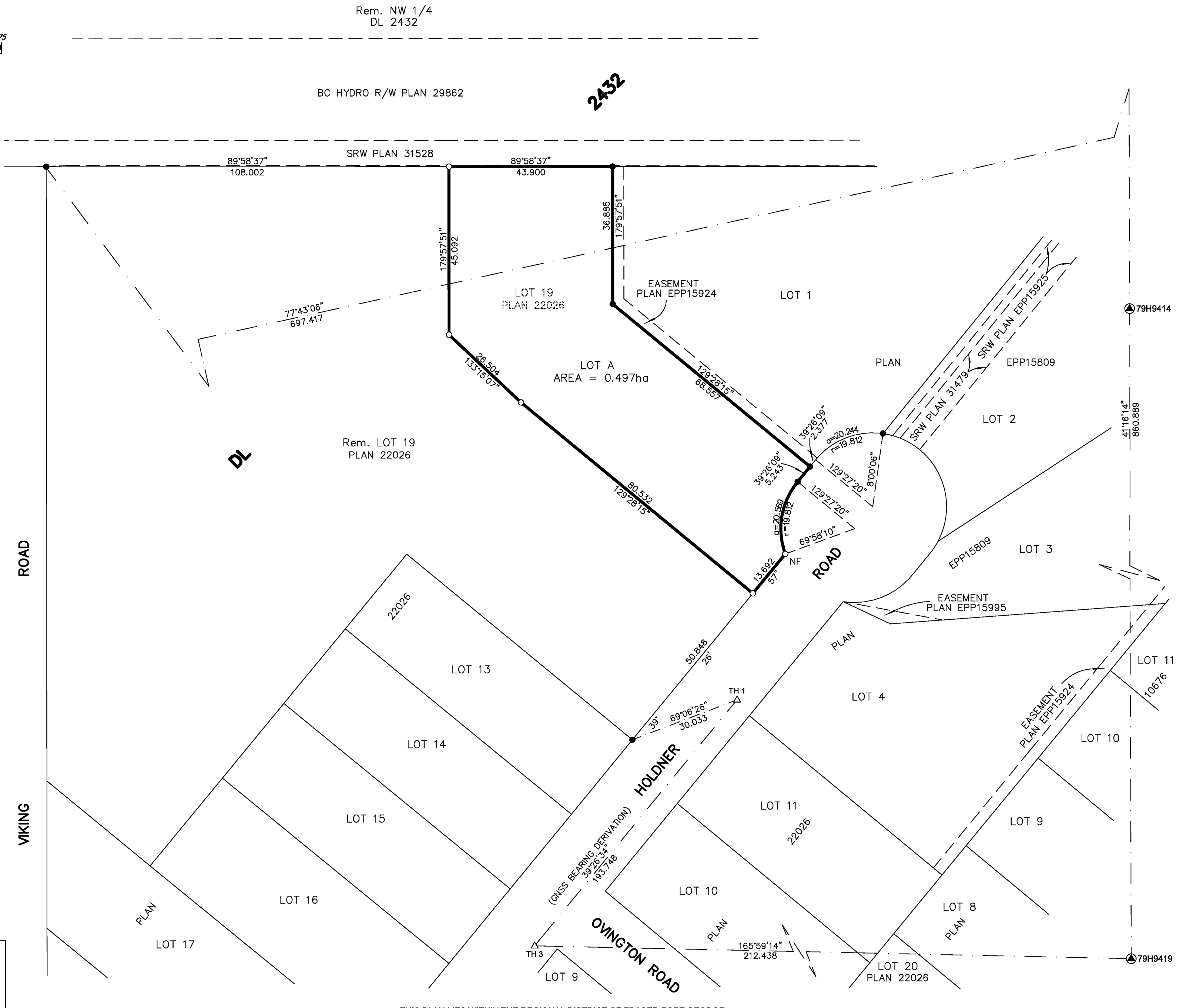
THIS PLAN LIES WITHIN THE JURISDICTION OF THE APPROVING OFFICER FOR THE CITY OF PRINCE GEORGE.
CPG FILE No: SD100562

THE FIELD SURVEY REPRESENTED BY THIS PLAN WAS COMPLETED ON THE 22nd DAY OF NOVEMBER, 2018.
DARREN KENT, BCLS 904

HBH FILE No. BLA1801



PRINCE GEORGE, BC
PHONE: (250) 640-2287
SMITHERS, BC
PHONE: (250) 847-3808
BCLS@HBHLandSurveying.ca



THIS PLAN LIES WITHIN THE REGIONAL DISTRICT OF FRASER-FORT GEORGE.