

# REFERENCE PLAN OF PART OF LOT 153, DISTRICT LOT 4377, CARIBOO DISTRICT, PLAN 1329.

PLAN EPP87149

PURSUANT TO SECTION 107 OF THE LAND TITLE ACT.

INTEGRATED SURVEY AREA No. 39 PRINCE GEORGE, BC, NAD83 (CSRS) 4.0.0.BC.1

BCGS 93G.097



THE INTENDED PLOT SIZE OF THIS PLAN IS 560mm IN WIDTH BY 432mm IN HEIGHT (C SIZE) WHEN PLOTTED AT A SCALE OF 1:750.

GRID BEARINGS ARE DERIVED FROM OBSERVATIONS BETWEEN GEODETIC CONTROL MONUMENTS 86H1568 AND 86H1580.

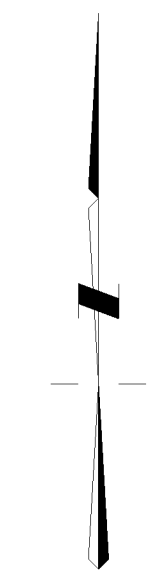
THE UTM COORDINATES AND ESTIMATED HORIZONTAL POSITIONAL ACCURACY ACHIEVED HAVE BEEN DERIVED FROM MASCOT PUBLISHED COORDINATES AND STANDARD DEVIATIONS FOR GEODETIC CONTROL MONUMENTS 86H1568 AND 86H1580.

THIS PLAN SHOWS HORIZONTAL GROUND-LEVEL DISTANCES UNLESS OTHERWISE SPECIFIED. TO COMPUTE GRID DISTANCES, MULTIPLY GROUND-LEVEL DISTANCES BY THE AVERAGE COMBINED FACTOR OF 0.9995052 WHICH HAS BEEN DERIVED FROM CONTROL MONUMENT 86H1580.

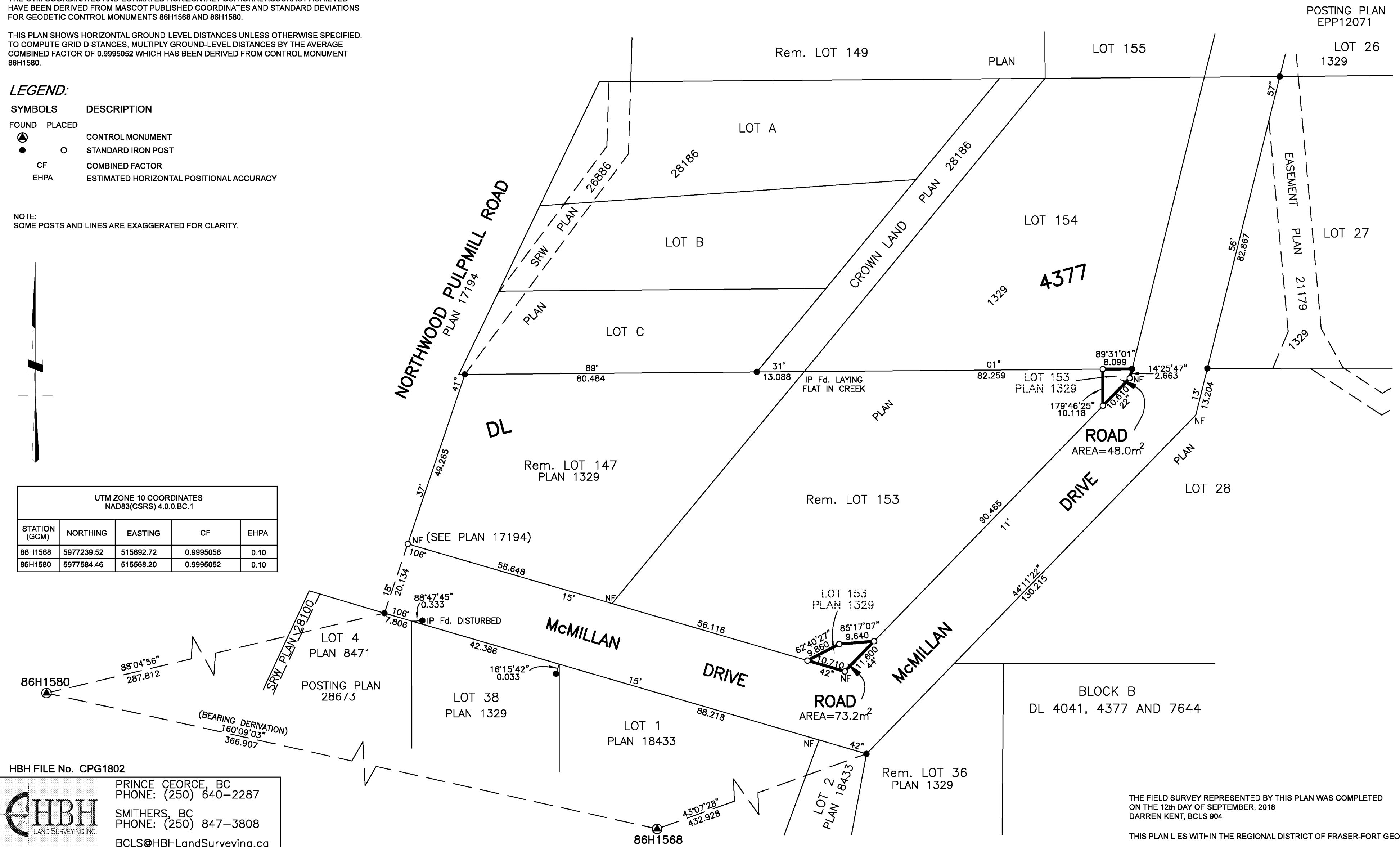
**LEGEND:**

SYMBOLS	DESCRIPTION
FOUND	PLACED
●	○
○	○
CF	COMBINED FACTOR
EHPA	ESTIMATED HORIZONTAL POSITIONAL ACCURACY

NOTE:  
SOME POSTS AND LINES ARE EXAGGERATED FOR CLARITY.



UTM ZONE 10 COORDINATES NAD83(CSRS) 4.0.0.BC.1				
STATION (GCM)	NORTHING	EASTING	CF	EHPA
86H1568	5977239.52	515692.72	0.9995056	0.10
86H1580	5977584.46	515668.20	0.9995052	0.10



HBH FILE No. CPG1802



PRINCE GEORGE, BC  
PHONE: (250) 640-2287  
SMITHERS, BC  
PHONE: (250) 847-3808  
BCLS@HBHLandSurveying.ca

THE FIELD SURVEY REPRESENTED BY THIS PLAN WAS COMPLETED ON THE 12th DAY OF SEPTEMBER, 2018  
DARREN KENT, BCLS 904

THIS PLAN LIES WITHIN THE REGIONAL DISTRICT OF FRASER-FORT GEORGE.