

**SUBDIVISION PLAN OF LOT 8, DISTRICT LOT 2424,  
CARIBOO DISTRICT, PLAN 15996, EXCEPT PLAN EPP14823.**

**PLAN EPP87147**

PURSUANT TO SECTION 67 OF THE LAND TITLE ACT.

INTEGRATED SURVEY AREA No. 39 PRINCE GEORGE, BC, NAD83 (CSRS) 4.0.0.BC.1

BCGS 93J.006



THE INTENDED PLOT SIZE OF THIS PLAN IS 560mm IN WIDTH BY 432mm IN HEIGHT (C SIZE) WHEN PLOTTED AT A SCALE OF 1:500.

GRID BEARINGS ARE DERIVED FROM OBSERVATIONS BETWEEN GEODETIC CONTROL MONUMENTS 86H1704 AND 86H1803.

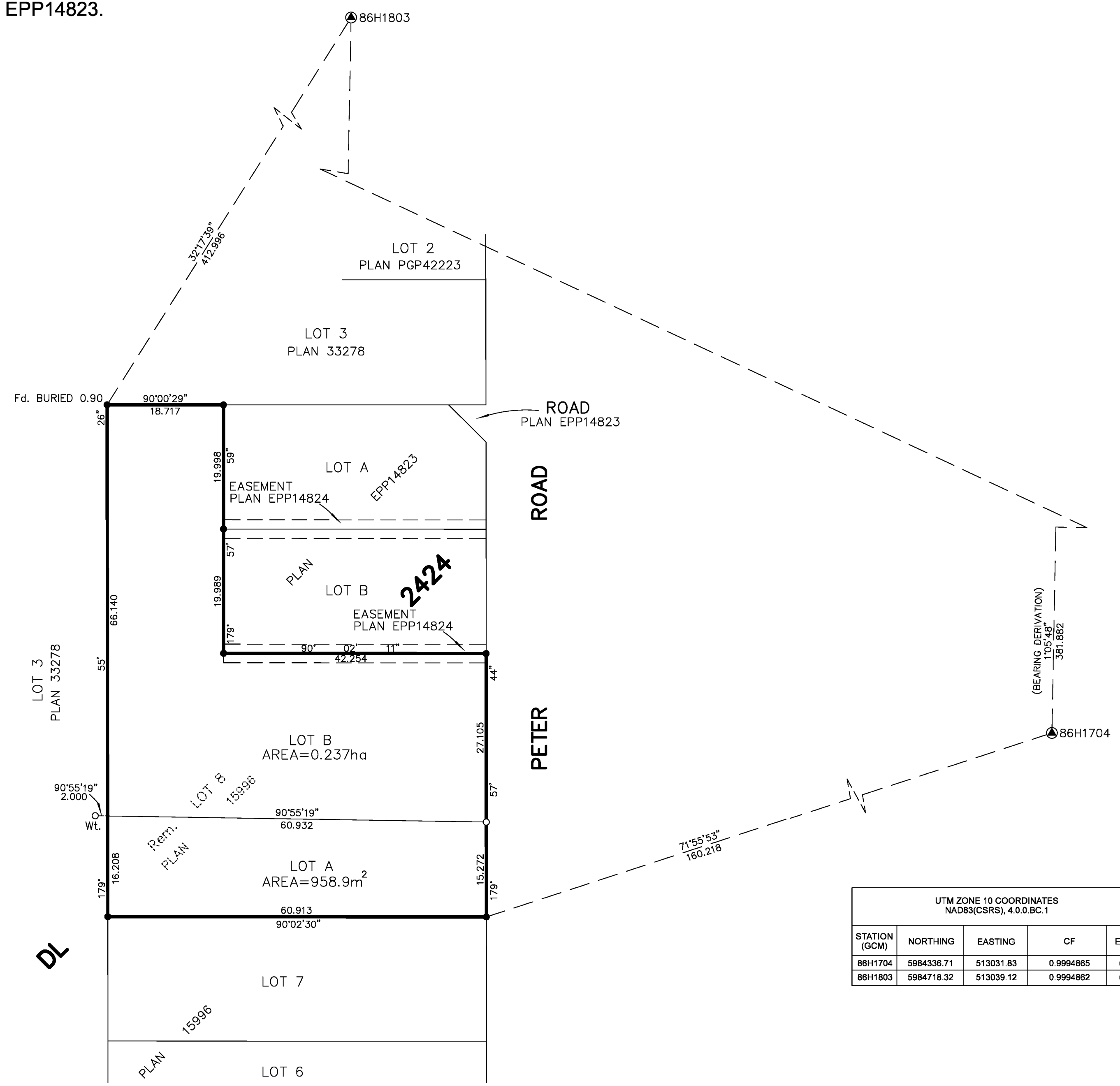
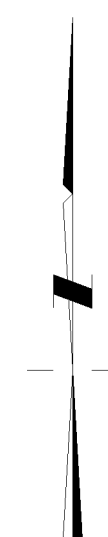
THE UTM COORDINATES AND ESTIMATED HORIZONTAL POSITIONAL ACCURACY ACHIEVED HAVE BEEN DERIVED FROM MASCOT PUBLISHED COORDINATES AND STANDARD DEVIATIONS FOR GEODETIC CONTROL MONUMENTS 86H1704 AND 86H1803.

THIS PLAN SHOWS HORIZONTAL GROUND-LEVEL DISTANCES UNLESS OTHERWISE SPECIFIED. TO COMPUTE GRID DISTANCES, MULTIPLY GROUND-LEVEL DISTANCES BY THE AVERAGE COMBINED FACTOR OF 0.9994865 WHICH HAS BEEN DERIVED FROM CONTROL MONUMENT 86H1704.

**LEGEND:**

SYMBOLS		DESCRIPTION
FOUND	PLACED	
●	○	CONTROL MONUMENT
●	○	STANDARD IRON POST
EHPA		ESTIMATED HORIZONTAL POSITIONAL ACCURACY
CF		COMBINED FACTOR

NOTE:  
THIS PLAN SHOWS ONE OR MORE WITNESS POSTS WHICH ARE NOT SET ON THE TRUE CORNER(S).



UTM ZONE 10 COORDINATES NAD83(CSRS), 4.0.0.BC.1				
STATION (GCM)	NORTHING	EASTING	CF	EHPA
86H1704	5984336.71	513031.83	0.9994865	0.08
86H1803	5984718.32	513039.12	0.9994862	0.08

THIS PLAN LIES WITHIN THE JURISDICTION OF THE APPROVING OFFICER FOR THE CITY OF PRINCE GEORGE.  
CPG FILE No: SD100578

THE FIELD SURVEY REPRESENTED BY THIS PLAN WAS COMPLETED ON THE 19th DAY OF SEPTEMBER, 2018  
DARREN KENT, BCLS 904

HBH FILE No. MCC1801-S

**HBH** LAND SURVEYING INC.  
PRINCE GEORGE, BC  
PHONE: (250) 640-2287  
SMITHERS, BC  
PHONE: (250) 847-3808  
BCLS@HBHLandSurveying.ca

THIS PLAN LIES WITHIN THE REGIONAL DISTRICT OF FRASER-FORT GEORGE