

SUBDIVISION PLAN OF LOT 1, DISTRICT LOT 4048, CARIBOO DISTRICT, PLAN 16759

PLAN EPP86827

PURSUANT TO SECTION 67 OF THE LAND TITLE ACT
INTEGRATED SURVEY AREA No. 39 PRINCE GEORGE, BC, NAD83 (CSRS) 4.0.0.BC.1

BCGS 93G.096



THE INTENDED PLOT SIZE OF THIS PLAN IS 432mm IN WIDTH BY 560mm IN HEIGHT (C SIZE) WHEN PLOTTED AT A SCALE OF 1:500.

ALL DISTANCES ARE IN METRES AND DECIMALS THEREOF.

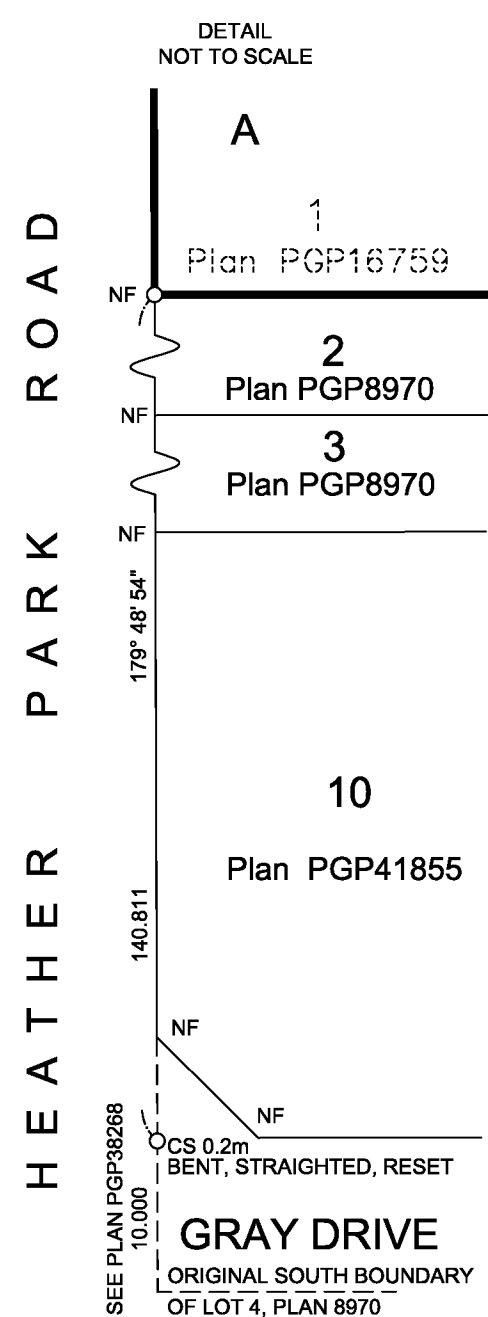
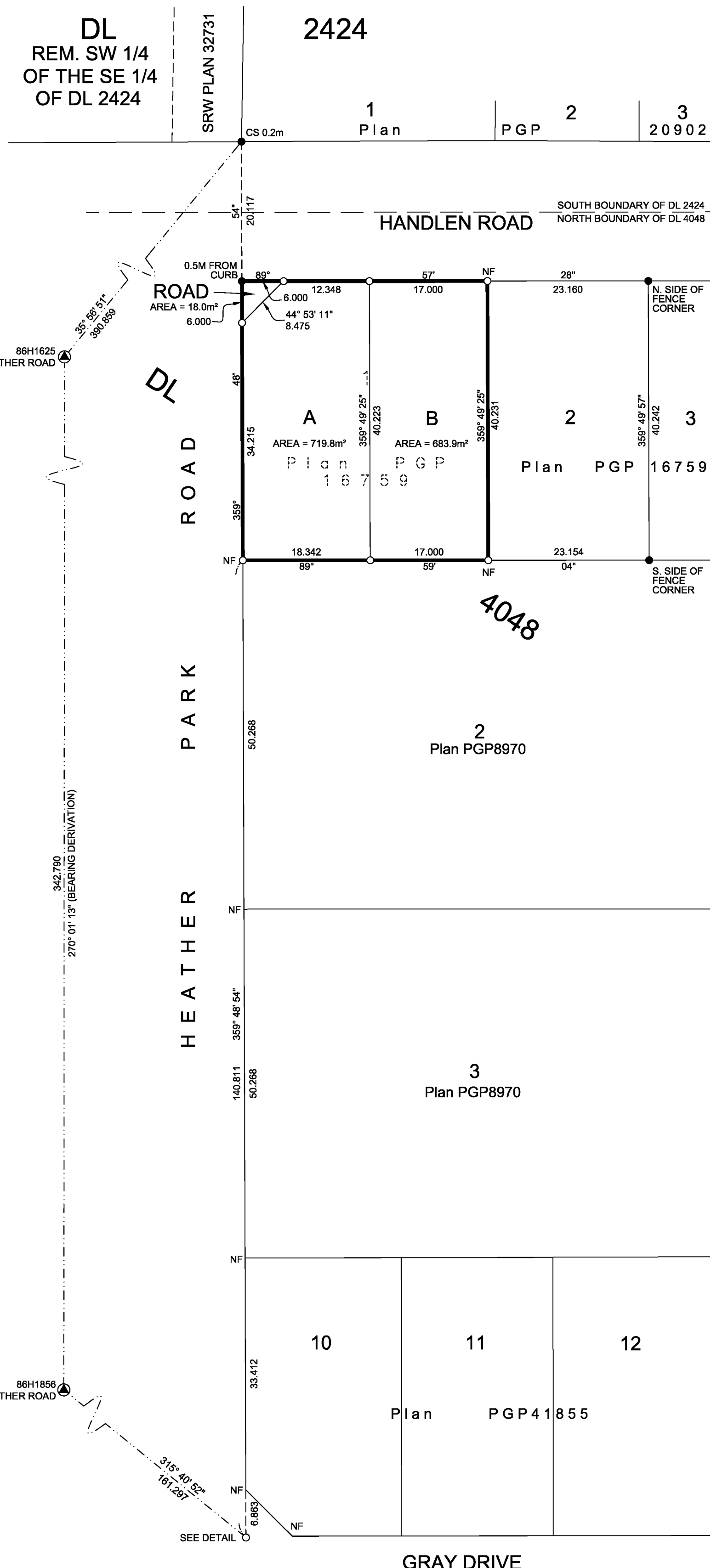
GRID BEARINGS ARE DERIVED FROM OBSERVATIONS BETWEEN GEODETIC CONTROL MONUMENTS 86H1625 AND 86H1856. THE UTM COORDINATES AND ESTIMATED HORIZONTAL POSITIONAL ACCURACY ACHIEVED HAVE BEEN DERIVED FROM MASCOT PUBLISHED COORDINATES AND STANDARD DEVIATIONS FOR GEODETIC CONTROL MONUMENTS 86H1625 AND 86H1856.

THIS PLAN SHOWS HORIZONTAL GROUND-LEVEL DISTANCES UNLESS OTHERWISE SPECIFIED. TO COMPUTE GRID DISTANCES, MULTIPLY GROUND-LEVEL DISTANCES BY THE AVERAGE COMBINED FACTOR OF 0.9994841 WHICH HAS BEEN DERIVED FROM CONTROL MONUMENT 86H1856.

LEGEND

SYMBOLS		DESCRIPTION
FOUND	PLACED	
		CONTROL MONUMENT
		ESTIMATED HORIZONTAL POSITIONAL ACCURACY

GEOREFERENCING POSITIONS UTM COORDINATES, ZONE 10, NAD 83 (CSRS), 4.0.0.BC.1				
STATION	NORTHING	EASTING	EHPA	CSF
86H1625	5982808.29	512403.75	0.09	0.9994822
86H1856	5982808.17	512746.36	0.09	0.9994841



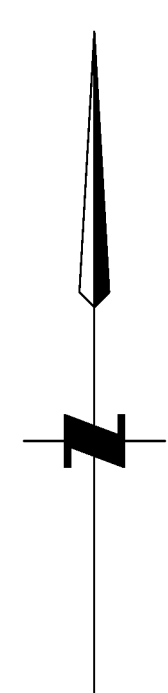
THIS PLAN LIES WITHIN THE JURISDICTION OF THE APPROVING OFFICER FOR THE CITY OF PRINCE GEORGE.

CPG FILE NO.: SD100565

THE FIELD SURVEY REPRESENTED BY THIS PLAN WAS COMPLETED ON THE 19th DAY OF JULY, 2019

SCOTT A. MAGUIRE, BCLS 903

THIS PLAN LIES WITHIN THE REGIONAL DISTRICT OF FRASER-FORT GEORGE.



FILE: 18094-SD-R2
KOEHLER LAND SURVEYING INC.
1698 LYON STREET SOUTH
PRINCE GEORGE, BC V2N 1T3
TEL: (250) 614-9703