

**REFERENCE PLAN OF EASEMENT OVER PART OF COMMON PROPERTY,
DISTRICT LOT 753, CARIBOO DISTRICT, PLAN EPS4560**

PLAN EPP85212

PURSUANT TO SECTION 99(1)(e) OF THE LAND TITLE ACT

INTEGRATED SURVEY AREA No. 39 PRINCE GEORGE, BC, NAD83 (CSRS) 4.0.0.BC.1

BCGS 93G.087



THE INTENDED PLOT SIZE OF THIS PLAN IS 560mm IN WIDTH BY 864mm IN HEIGHT (D SIZE) WHEN PLOTTED AT A SCALE OF 1:500.

ALL DISTANCES ARE IN METRES AND DECIMALS THEREOF.

GRID BEARINGS ARE DERIVED FROM PLAN EPP75658 AND ARE REFERRED TO THE CENTRAL MERIDIAN OF UTM ZONE 10 (123° WEST LONGITUDE)

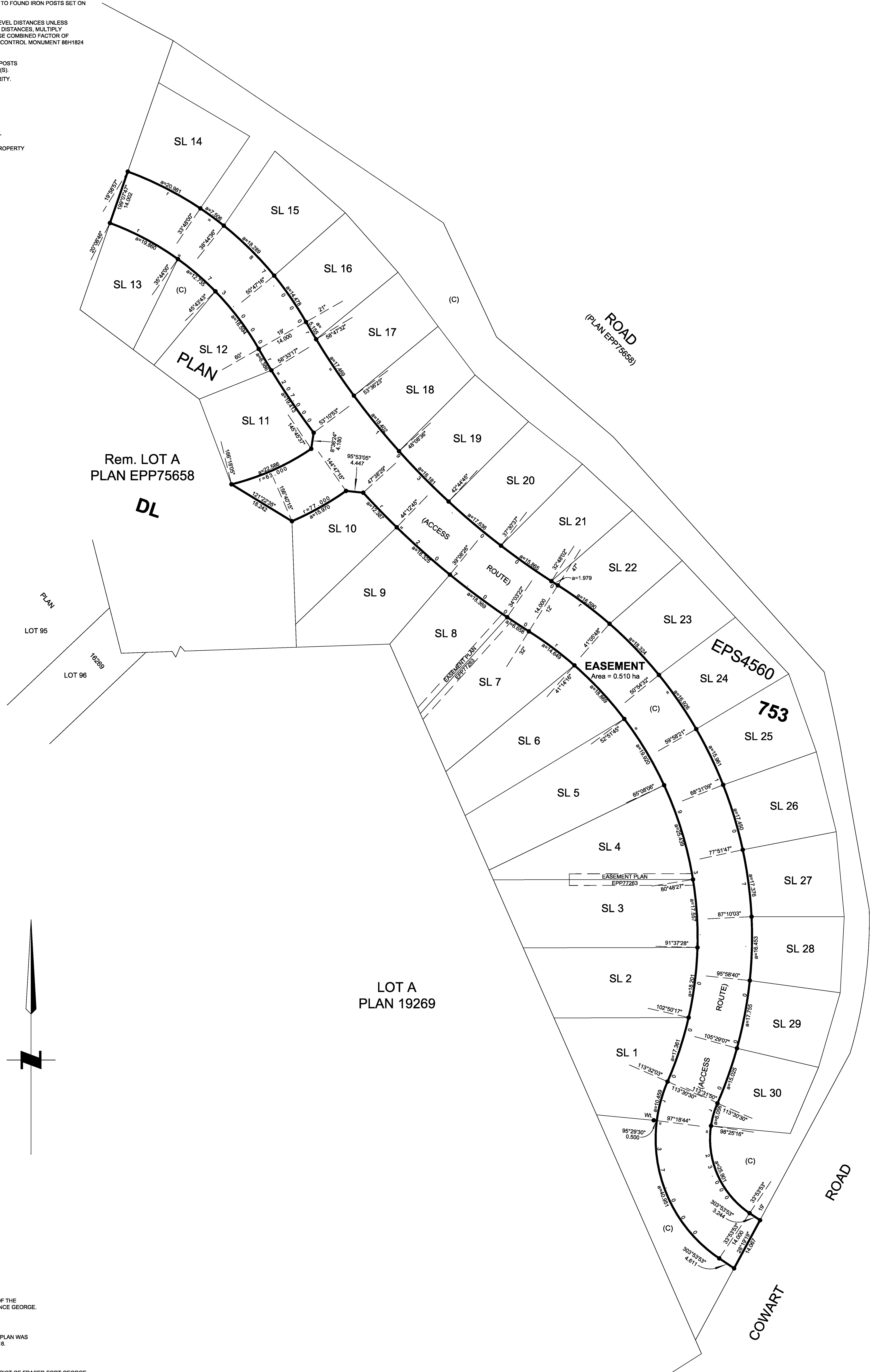
THE UTM COORDINATES AND ESTIMATED HORIZONTAL POSITIONAL ACCURACY ACHIEVED DERIVED FROM TIES TO FOUND IRON POSTS SET ON PLAN EPS4560.

THIS PLAN SHOWS HORIZONTAL GROUND-LEVEL DISTANCES UNLESS OTHERWISE SPECIFIED. TO COMPUTE GRID DISTANCES, MULTIPLY GROUND-LEVEL DISTANCES BY THE AVERAGE COMBINED FACTOR OF 0.9995058 WHICH HAS BEEN DERIVED FROM CONTROL MONUMENT 86H1824

NOTE:
THIS PLAN SHOWS ONE OR MORE WITNESS POSTS WHICH ARE NOT SET ON THE TRUE CORNER(S).
SOME POSTS ARE EXAGGERATED FOR CLARITY.

LEGEND

SYMBOLS	DESCRIPTION
FOUND PLACED	
●	STANDARD IRON POST
(C)	DENOTES COMMON PROPERTY



THIS PLAN LIES WITHIN THE JURISDICTION OF THE APPROVING OFFICER FOR THE CITY OF PRINCE GEORGE.

CPG FILE NO.: SD100534

THE FIELD SURVEY REPRESENTED BY THIS PLAN WAS COMPLETED ON THE 27TH DAY OF JULY, 2018.

ALBERT KOEHLER, BCLS 974

THIS PLAN LIES WITHIN THE REGIONAL DISTRICT OF FRASER-FORT GEORGE.

FILE: 20170029 - ACCESS - EAS
 KOEHLER LAND SURVEYING INC.
 1698 LYON STREET SOUTH
 PRINCE GEORGE, BC, V2N 1T3
 TEL: (250) 614-9703