

REFERENCE PLAN OF EASEMENT OVER PARTS OF
LOT 10, DISTRICT LOTS 754 AND 1605 AND LOTS 11 TO 20,
DISTRICT LOT 1605 ALL OF CARIBOO DISTRICT, PLAN EPP8499.

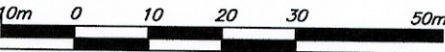
PLAN EPP8500

Pursuant to Section 99(1)(e)
of the Land Title Act.

BCGS 93G.087

THIS PLAN LIES WITHIN THE INTEGRATED SURVEY
AREA No. 39, PRINCE GEORGE, B.C. NAD83 (CSRS)

THE INTENDED PLOT SIZE OF THIS PLAN IS 560mm IN WIDTH BY
432mm IN HEIGHT (C SIZE) WHEN PLOTTED AT A SCALE OF 1:750



ALL DISTANCES ARE SHOWN IN METRES AND
DECIMALS THEREOF, UNLESS OTHERWISE INDICATED.

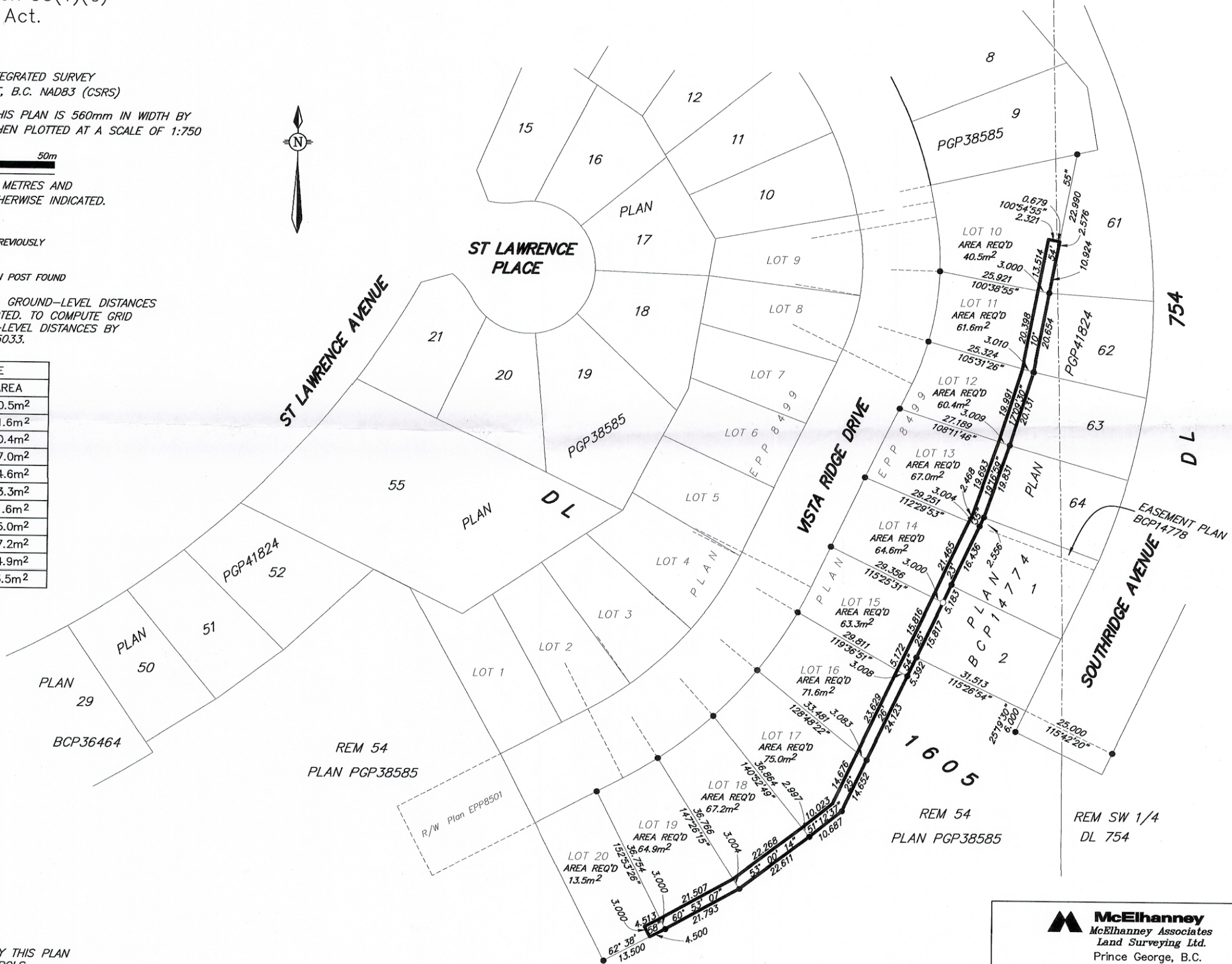
LEGEND

GRID BEARINGS ARE DERIVED FROM PREVIOUSLY
INTEGRATED PLAN EPP

• DENOTES STANDARD IRON POST FOUND


THIS PLAN SHOWS HORIZONTAL GROUND-LEVEL DISTANCES
EXCEPT WHERE OTHERWISE NOTED. TO COMPUTE GRID
DISTANCES MULTIPLY GROUND-LEVEL DISTANCES BY
THE COMBINED FACTOR 0.9995033.

BOOK OF REFERENCE	
DESCRIPTION	AREA
Lot 10, Plan EPP8499	40.5m ²
Lot 11, Plan EPP8499	61.6m ²
Lot 12, Plan EPP8499	60.4m ²
Lot 13, Plan EPP8499	67.0m ²
Lot 14, Plan EPP8499	64.6m ²
Lot 15, Plan EPP8499	63.3m ²
Lot 16, Plan EPP8499	71.6m ²
Lot 17, Plan EPP8499	75.0m ²
Lot 18, Plan EPP8499	67.2m ²
Lot 19, Plan EPP8499	64.9m ²
Lot 20, Plan EPP8499	13.5m ²



THE FIELD SURVEY REPRESENTED BY THIS PLAN
WAS COMPLETED BY DALE KEOWN, BCLS
ON THE 27th DAY OF JULY, 2010.

THIS PLAN LIES WITHIN THE REGIONAL DISTRICT OF FRASER - FORT GEORGE.

**McElhanney**
McElhanney Associates
Land Surveying Ltd.
Prince George, B.C.
Ph: (250) 561-2229 Fax: 563-1941

DL 1605	File No. - 5841-E
---------	-------------------