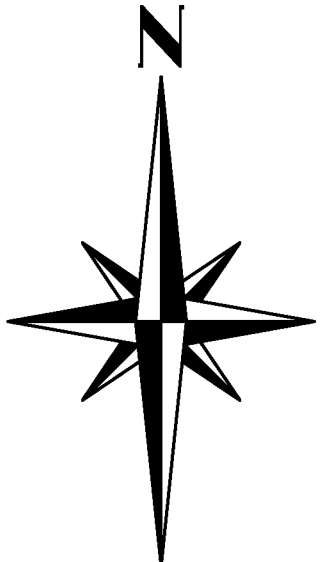
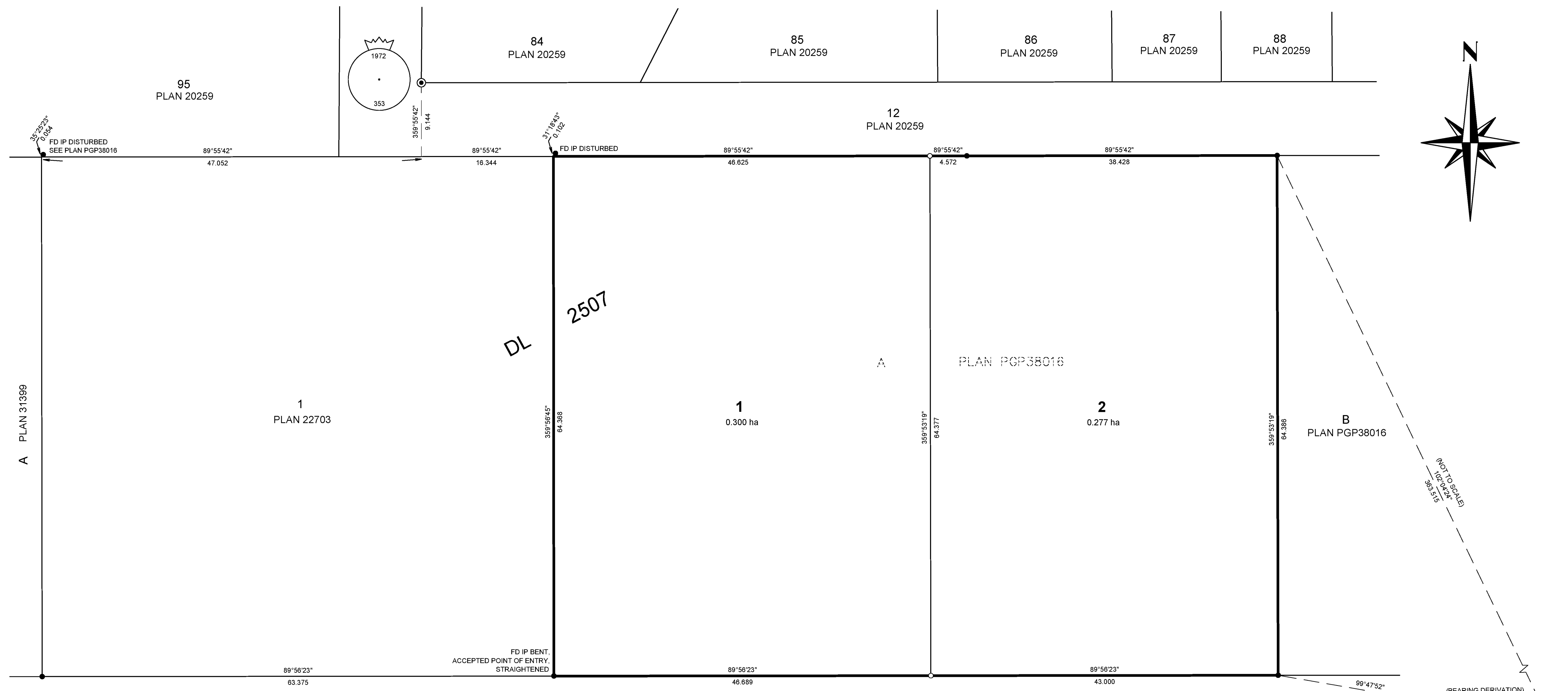


PLAN EPP84493



SUBDIVISION PLAN OF
LOT A DISTRICT LOT 2507
CARIBOO DISTRICT PLAN PGP38016

BCGS 93G.096

SCALE 1 : 300



ALL DISTANCES ARE IN METRES AND DECIMALS THEREOF

THE INTENDED PLOT SIZE OF THIS PLAN IS 864 mm IN WIDTH BY 560 mm IN HEIGHT (D-SIZE) WHEN PLOTTED AT A SCALE OF 1:300

LEGEND:

INTEGRATED SURVEY AREA No. 39 PRINCE GEORGE.
NAD 83 (CSRS) 4.0 BC.1.

GRID BEARINGS ARE DERIVED FROM OBSERVATIONS BETWEEN
GEODETIC CONTROL MONUMENTS 85H1206 AND 85H1189.

THIS PLAN SHOWS HORIZONTAL GROUND-LEVEL DISTANCES.
UNLESS OTHERWISE SPECIFIED, TO COMPUTE GRID DISTANCES,
MULTIPLY GROUND-LEVEL DISTANCES BY THE AVERAGE
COMBINED FACTOR OF 0.99950555 WHICH HAS BEEN DERIVED
FROM GEODETIC CONTROL MONUMENTS 85H1206 AND 85H1189.

SYMBOLS DESCRIPTION

FOUND	PLACED	DESCRIPTION
⊙	⊙	CONTROL MONUMENT
●	○	STANDARD CONCRETE POST
●	○	STANDARD IRON POST

DATUM NAME(CSRS) 4.0 BC.1
UTM ZONE 10
NORTHING 5972688.377
EASTING 512888.710
POINT COMBINED FACTOR 0.99950555
ESTIMATED HORIZONTAL POSITIONAL ACCURACY 0.09m

DATUM NAME(CSRS) 4.0 BC.1
UTM ZONE 10
NORTHING 5973572.280
EASTING 512951.977
POINT COMBINED FACTOR 0.99950555
ESTIMATED HORIZONTAL POSITIONAL ACCURACY 0.09m

15th AVENUE

THIS PLAN LIES WITHIN THE JURISDICTION OF THE
APPROVING OFFICER FOR THE CITY OF PRINCE GEORGE.
CPG FILE No.: SD100559.

THIS PLAN LIES WITHIN THE REGIONAL
DISTRICT OF FRASER-FORT GEORGE.

THE FIELD SURVEY REPRESENTED BY THIS PLAN
WAS COMPLETED ON THE 3rd DAY OF JULY, 2018.
JONATHAN M. AUSTIN, BCLS 819

McElhanney
McELHANNEY ASSOCIATES
LAND SURVEYING LTD.
Suite 12
558 North Nechako Road
Prince George BC
Canada V2K 1A1
Tel 250 561 2229
FILE NO. 2422.03514.00
DRAWING NO. 3514-00-V-SUBF.DWG