

REFERENCE PLAN OF LOT 2, DISTRICT LOT 4039,  
CARIBOO DISTRICT, PLAN PGP37547

PLAN EPP83114

PURSUANT TO SECTION 100 (1)(a), LAND TITLE  
ACT AND SECTION 235, STRATA PROPERTY ACT

BCGS 93C.097



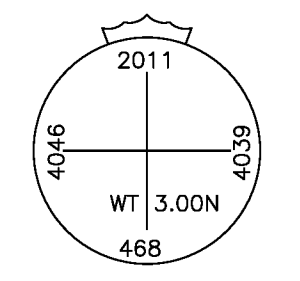
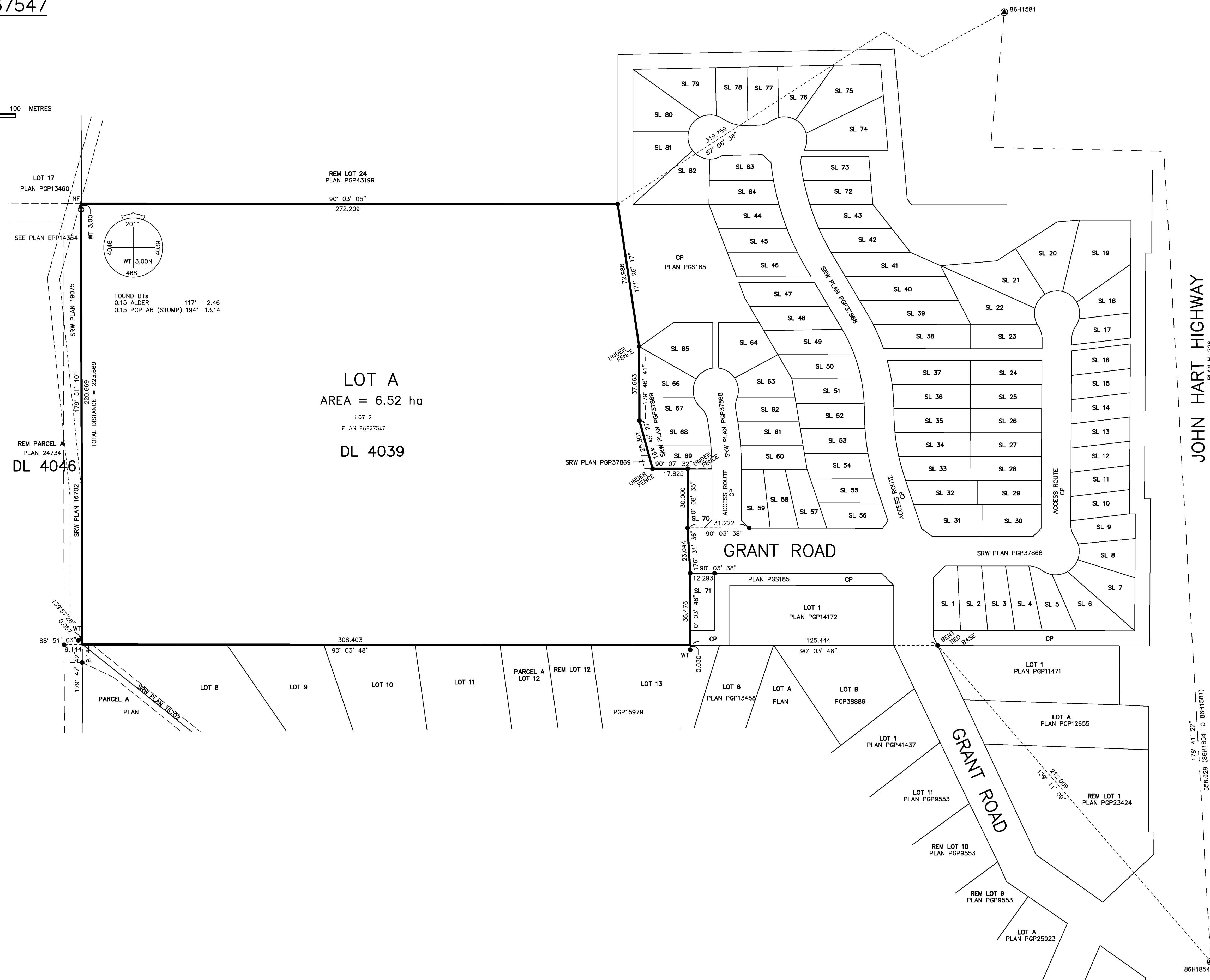
THE INTENDED PLOT SIZE OF THIS PLAN IS 864mm IN WIDTH BY  
560mm IN HEIGHT (D SIZE) WHEN PLOTTED AT A SCALE OF 1:1000.  
ALL DISTANCES ARE IN METRES AND DECIMALS THEREOF.

LEGEND

- INDICATES CONTROL MONUMENT FOUND
- INDICATES STANDARD IRON POST FOUND
- INDICATES STANDARD CAPPED POST FOUND

NOTES

- INTEGRATED SURVEY AREA NO. 39, CITY OF PRINCE GEORGE, NAD83 (CSRS) [4.0.0.BC.1]
- GRID BEARINGS ARE DERIVED FROM OBSERVATIONS BETWEEN GEODETIC CONTROL MONUMENTS 86H1581 AND 86H1854 AND ARE REFERRED TO THE CENTRAL MERIDIAN OF UTM ZONE 10.
- THIS PLAN SHOWS HORIZONTAL GROUND-LEVEL DISTANCES UNLESS OTHERWISE SPECIFIED. TO COMPUTE GRID DISTANCES, MULTIPLY GROUND-LEVEL DISTANCES BY THE AVERAGE COMBINED FACTOR OF 0.99949805. THE AVERAGE COMBINED FACTOR HAS BEEN DETERMINED FROM GEODETIC CONTROL MONUMENTS 86H1581 AND 86H1854.
- THE UTM COORDINATES AND ESTIMATED HORIZONTAL POSITIONAL ACCURACY ACHIEVED ARE DERIVED FROM MASCOOT PUBLISHED COORDINATES AND STANDARD DEVIATIONS FOR GEODETIC CONTROL MONUMENTS 86H1581 AND 86H1854.
- THIS PLAN SHOWS ONE OR MORE WITNESS POSTS WHICH ARE NOT SET ON THE TRUE CORNER(S).
- WITNESS POSTS AND OFFSET POSTS ARE ON PROPERTY LINE OR PROPERTY LINE PRODUCTION UNLESS OTHERWISE NOTED.
- FOR CLARITY PURPOSES CERTAIN OFFSET LINES ARE NOT TO SCALE.
- THIS PLAN LIES WITHIN THE JURISDICTION OF THE APPROVING OFFICER FOR THE CITY OF PRINCE GEORGE.
- IF THERE IS A DISCREPANCY BETWEEN THE COORDINATE VALUES LISTED HERE AND THE OFFICIAL INTEGRATED SURVEY AREA COORDINATE LISTING, THE LATTER SHALL PREVAIL.
- BEARINGS TO BEARING TREES ARE MAGNETIC.



FOUND BTs  
0.15 ALDER 117' 2.46  
0.15 POPLAR (STUMP) 194' 13.14

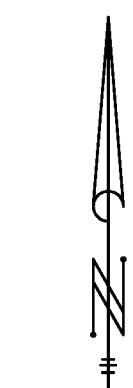
LOT A  
AREA = 6.52 ha  
LOT 2  
PLAN PGP37547  
DL 4039

UTM ZONE 10 NAD83(CSRS) 4.0.0.BC.1 COORDINATES				
GCM	NORTHING	EASTING	COMBINED SCALE FACTOR	HPA
86H1581	5,980,882.910	515,192.811	0.9994967	0.095
86H1854	5,980,325.190	515,225.073	0.9994994	0.095

\*HPA\* REFERS TO THE ESTIMATED HORIZONTAL POSITIONAL ACCURACY

THIS PLAN LIES WITHIN THE FRASER - FORT GEORGE REGIONAL DISTRICT

THE FIELD SURVEY REPRESENTED BY THIS PLAN WAS COMPLETED  
ON THE 17TH DAY OF MAY, 2018  
JAMES E. GREGSON, BCLS #836



**Stantec**  
Stantec Land Surveying Ltd.  
500 - 4730 - Kingsway  
Burnaby, BC, Canada, V5H 0C6  
Tel. 604-696-8424  
www.stantec.com