

STATUTORY RIGHT OF WAY PLAN OVER PART OF LOT 56, DISTRICT LOT 2425, CARIBOO DISTRICT, PLAN EPP55596.

PLAN EPP82473

PURSUANT TO SECTION 113 OF THE LAND TITLE ACT.

INTEGRATED SURVEY AREA No. 39 PRINCE GEORGE, BC, NAD83 (CSRS) 4.0.0.BC.1

BCGS 93J.006



THE INTENDED PLOT SIZE OF THIS PLAN IS
280mm IN WIDTH BY 432mm IN HEIGHT
(B SIZE) WHEN PLOTTED AT A SCALE OF 1:150.

ALL DISTANCES ARE IN METRES AND
DECIMALS THEREOF.

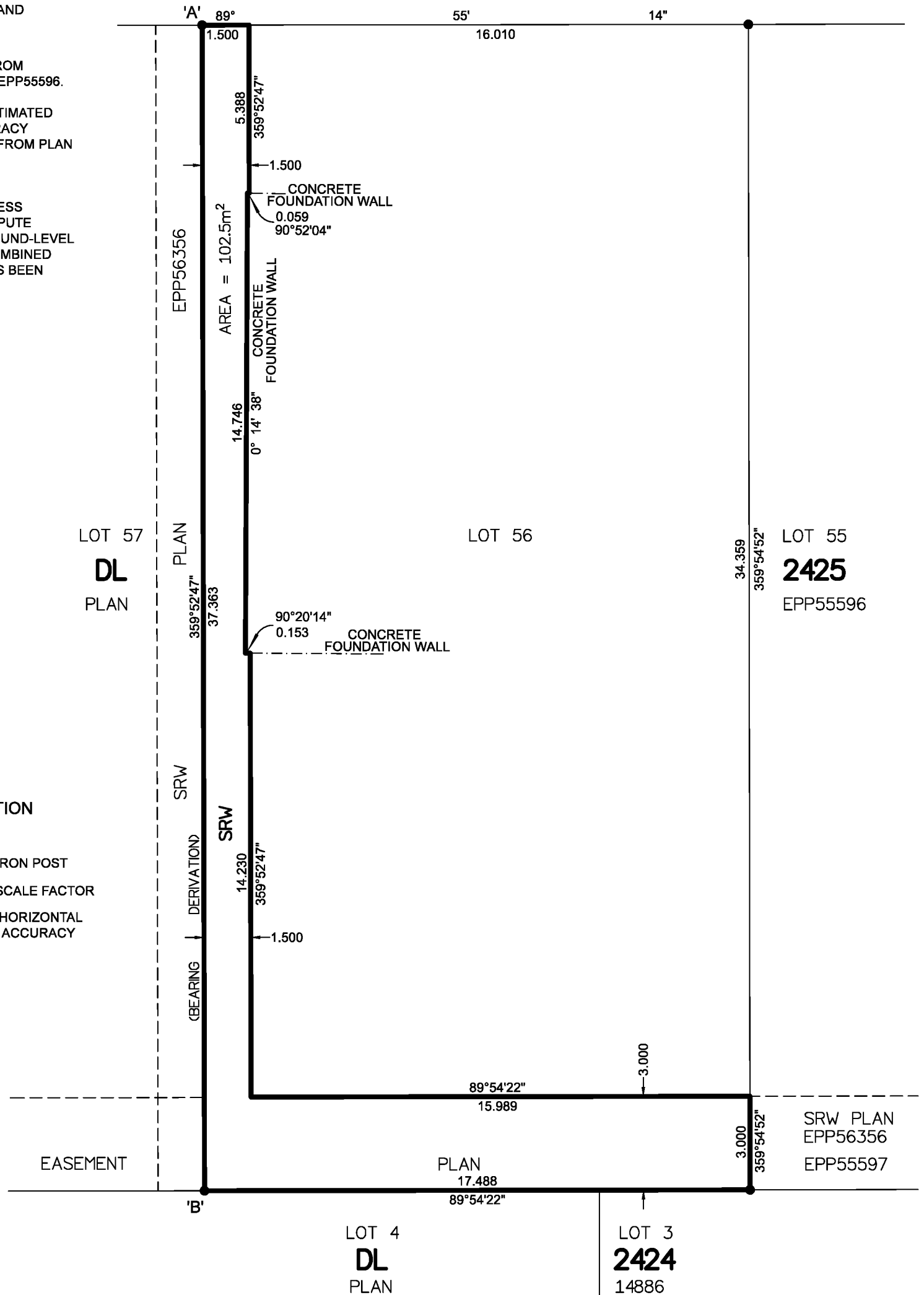
GRID BEARINGS ARE DERIVED FROM
PREVIOUSLY INTEGRATED PLAN EPP55596.

THE UTM COORDINATES AND ESTIMATED
HORIZONTAL POSITIONAL ACCURACY
ACHIEVED HAVE BEEN DERIVED FROM PLAN
EPP55596.

THIS PLAN SHOWS HORIZONTAL
GROUND-LEVEL DISTANCES UNLESS
OTHERWISE SPECIFIED. TO COMPUTE
GRID DISTANCES, MULTIPLY GROUND-LEVEL
DISTANCES BY THE AVERAGE COMBINED
FACTOR OF 0.9994835 WHICH HAS BEEN
DERIVED FROM
PLAN EPP55596.



WOODSTOCK COURT



LEGEND

SYMBOLS		DESCRIPTION
FOUND	PLACED	
●		STANDARD IRON POST
CSF		COMBINED SCALE FACTOR
EHPA		ESTIMATED HORIZONTAL POSITIONAL ACCURACY

THE FIELD SURVEY REPRESENTED BY THIS PLAN WAS COMPLETED
ON THE 18th DAY OF APRIL, 2018
SHAUNA C. GOERTZEN, BCLS 798

THIS PLAN LIES WITHIN THE REGIONAL DISTRICT OF
FRASER-FORT GEORGE.

GEOREFERENCING POSITIONS UTM COORDINATES, ZONE 10, NAD 83 (CSRS), 4.0.0.BC.1				
STATION	NORTHING	EASTING	EHPA	CSF
Fd. IP 'A'	5984758.55	512115.31	0.09	0.9994835
Fd. IP 'B'	5984721.20	512115.38	0.09	0.9994835

McElhanney
McELHANNEY ASSOCIATES
LAND SURVEYING LTD.
Suite 12
556 North Nechako Road
Prince George BC
Canada V2K 1A1
Tel 250 561 2229

File No. 2341-6653-SRW