

REFERENCE PLAN OF ROAD DEDICATION OVER PARCEL A (PLAN B7859), DISTRICT LOT 343, CARIBOO DISTRICT.

PLAN EPP82472

PURSUANT TO SECTION 107 OF THE LAND TITLE ACT.
FOR ROAD DEDICATION

INTEGRATED SURVEY AREA No. 39 PRINCE GEORGE, BC, NAD83 (CSRS) 4.0.0.BC.1
BCGS 93G.097



THE INTENDED PLOT SIZE OF THIS PLAN IS 560mm IN WIDTH
BY 432mm IN HEIGHT (C SIZE) WHEN PLOTTED AT A SCALE
OF 1:500.

ALL DISTANCES ARE IN METRES AND DECIMALS THEREOF.

GRID BEARINGS ARE DERIVED FROM OBSERVATIONS
BETWEEN GEODETIC CONTROL MONUMENTS 85H1194
AND 85H1291.

THE UTM COORDINATES AND ESTIMATED HORIZONTAL
POSITIONAL ACCURACY ACHIEVED HAVE BEEN DERIVED
FROM MASCOT PUBLISHED COORDINATES AND STANDARD
DEVIATIONS FOR GEODETIC CONTROL MONUMENT 85H1194.

THIS PLAN SHOWS HORIZONTAL GROUND-LEVEL DISTANCES
UNLESS OTHERWISE SPECIFIED. TO COMPUTE GRID
DISTANCES, MULTIPLY GROUND-LEVEL DISTANCES BY THE
AVERAGE COMBINED FACTOR OF 0.9995136 WHICH HAS BEEN
DERIVED FROM GEODETIC CONTROL MONUMENTS 85H1194
AND 85H1291.

NOTE:
SOME POSTS AND LINES ARE EXAGGERATED FOR CLARITY.

LEGEND

SYMBOLS		DESCRIPTION
FOUND	PLACED	
●	○	CONTROL MONUMENT
●	○	STANDARD IRON POST
●	○	STANDARD ROCK POST
U		UNREGISTERED
UTP		UNSUITABLE TO POST
CSF		COMBINED SCALE FACTOR
EHPA		ESTIMATED HORIZONTAL POSITIONAL ACCURACY

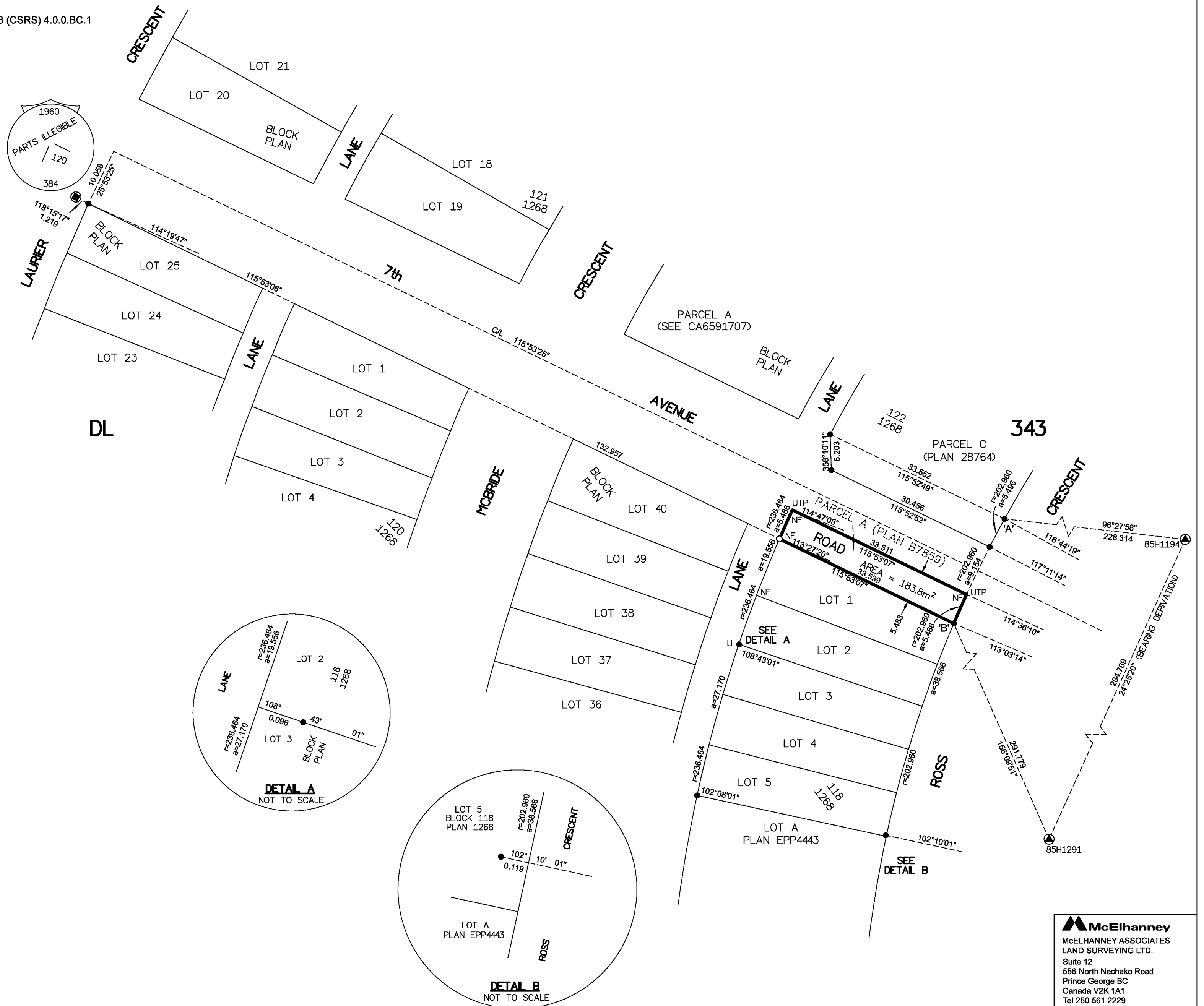
GEOREFERENCING POSITIONS UTM COORDINATES, ZONE 10, NAD 83 (CSRS), 4.0.0.BC.1				
STATION	NORTHING	EASTING	EHPA	CSF
Fd. IP 'A'	5974392.60	515662.16	0.10	0.9995136
Fd. IP 'B'	5974374.51	515653.38	0.10	0.9995136



THIS PLAN LIES WITHIN THE JURISDICTION OF THE
APPROVING OFFICER FOR THE CITY OF PRINCE GEORGE.

THE FIELD SURVEY REPRESENTED BY THIS PLAN WAS COMPLETED
ON THE 17th DAY OF MAY, 2018
SHAUNA C. GOERTZEN, BCLS 798

THIS PLAN LIES WITHIN THE REGIONAL DISTRICT OF FRASER-FORT GEORGE.



McElhanney
McELHANNEY ASSOCIATES
LAND SURVEYING LTD.
Suite 12
556 North Nechako Road
Prince George BC
Canada V2K 1A1
Tel 250 561 2229

File No. 2341-6651-RD