

**SUBDIVISION PLAN OF LOT 4, DISTRICT LOT 1433,
CARIBOO DISTRICT, PLAN 9947.**

PLAN EPP82200

PURSUANT TO SECTION 67 OF THE LAND TITLE ACT.

INTEGRATED SURVEY AREA No. 39 PRINCE GEORGE, BC, NAD83 (CSRS) 4.0.0.BC.1

BCGS 93G.087



THE INTENDED PLOT SIZE OF THIS PLAN IS 560mm IN WIDTH BY 432mm IN HEIGHT (C SIZE) WHEN PLOTTED AT A SCALE OF 1:500.

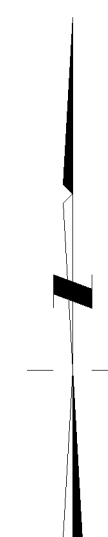
GRID BEARINGS ARE DERIVED FROM OBSERVATIONS BETWEEN GEODETIC CONTROL MONUMENTS 86H1849 AND 86H1838.

THE UTM COORDINATES AND ESTIMATED HORIZONTAL POSITIONAL ACCURACY ACHIEVED HAVE BEEN DERIVED FROM MASCOT PUBLISHED COORDINATES AND STANDARD DEVIATIONS FOR GEODETIC CONTROL MONUMENTS 86H1849 AND 86H1838.

THIS PLAN SHOWS HORIZONTAL GROUND-LEVEL DISTANCES UNLESS OTHERWISE SPECIFIED. TO COMPUTE GRID DISTANCES, MULTIPLY GROUND-LEVEL DISTANCES BY THE AVERAGE COMBINED FACTOR OF 0.999511 WHICH HAS BEEN DERIVED FROM CONTROL MONUMENT 86H1849.

LEGEND:

SYMBOLS		DESCRIPTION
FOUND	PLACED	
		CONTROL MONUMENT
		ESTIMATED HORIZONTAL POSITIONAL ACCURACY
		COMBINED FACTOR
		RE-ESTABLISHED



UTM ZONE 10 COORDINATES NAD83(CSRS), 4.0.0.BC.1				
STATION (GCM)	NORTHING	EASTING	CF	EHPA
86H1849	5970946.59	514002.68	0.999511	0.10
86H1838	5970692.93	514126.08	0.999511	0.10

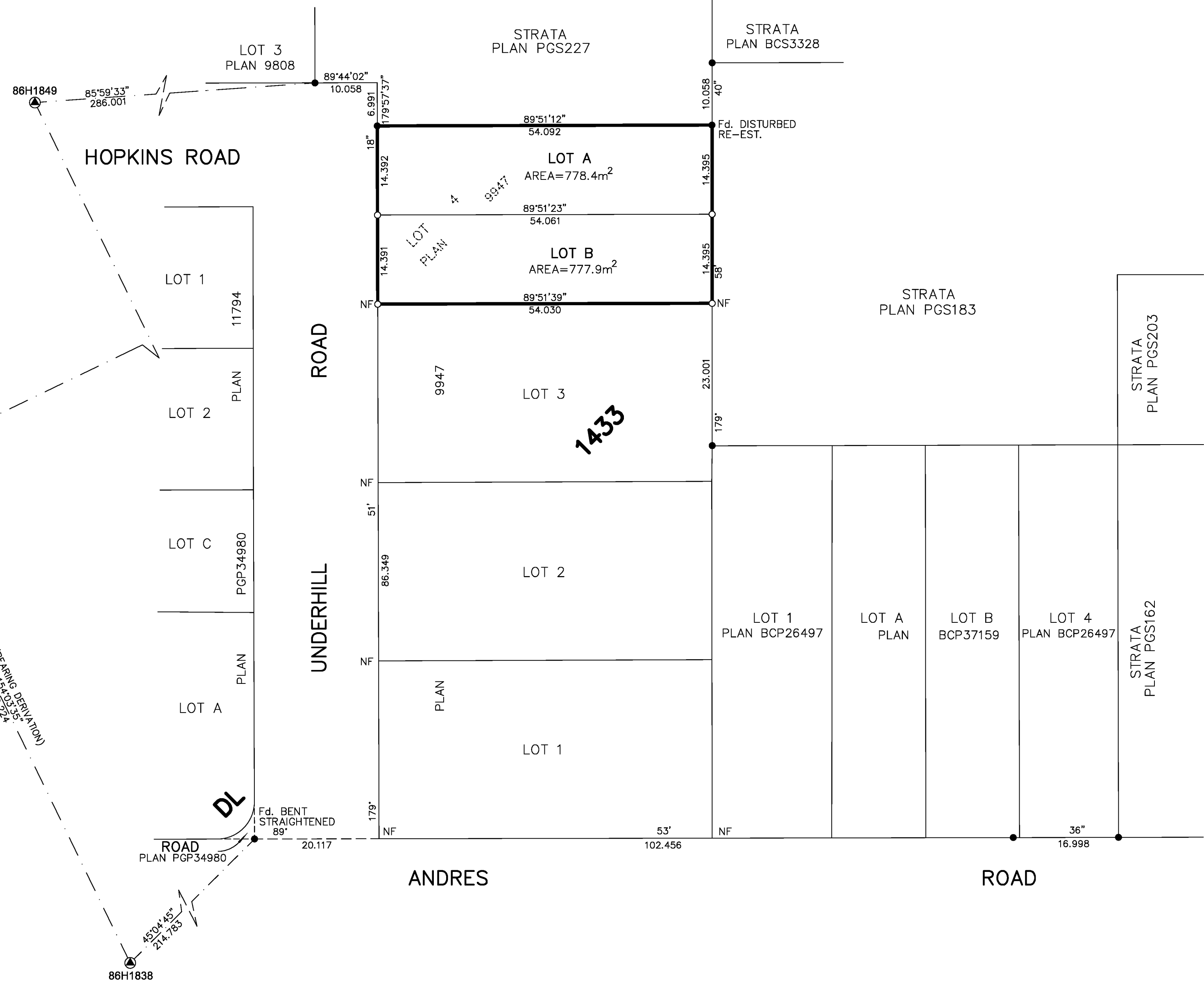
THIS PLAN LIES WITHIN THE JURISDICTION OF THE APPROVING OFFICER FOR THE CITY OF PRINCE GEORGE.
CPG FILE No: SD100540

THE FIELD SURVEY REPRESENTED BY THIS PLAN WAS COMPLETED ON THE 11th DAY OF OCTOBER, 2018
DARREN KENT, BCLS 904

HBH FILE No. PAD1801-S



PRINCE GEORGE, BC
PHONE: (250) 640-2287
SMITHERS, BC
PHONE: (250) 847-3808
BCLS@HBHLandSurveying.ca



THIS PLAN LIES WITHIN THE REGIONAL DISTRICT OF FRASER-FORT GEORGE