

REFERENCE PLAN OF CONSOLIDATION OF LOTS 17 THROUGH 20, INCLUSIVE, BLOCK 164, PLAN 1268; PARCEL A (W20318), BLOCK 164, PLAN 1268; LOT A, PLAN EPP43366; AND CLOSED ROAD, AS SHOWN ON PLAN EPP82198; ALL IN DISTRICT LOT 343, CARIBOO DISTRICT.

PURSUANT TO SECTION 100(1)(b) OF THE LAND TITLE ACT.

INTEGRATED SURVEY AREA No. 39 PRINCE GEORGE, BC, NAD83 (CSRS) 4.0.0.BC.1

BCGS 93G.097



THE INTENDED PLOT SIZE OF THIS PLAN IS 560mm IN WIDTH BY 432mm IN HEIGHT (C SIZE) WHEN PLOTTED AT A SCALE OF 1:750.

GRID BEARINGS ARE DERIVED FROM OBSERVATIONS BETWEEN GEODETIC CONTROL MONUMENTS 85H1090 AND 85H1341.

THE UTM COORDINATES AND ESTIMATED HORIZONTAL POSITIONAL ACCURACY ACHIEVED HAVE BEEN DERIVED FROM MASCOT PUBLISHED COORDINATES AND STANDARD DEVIATIONS FOR GEODETIC CONTROL MONUMENTS 85H1090 AND 85H1341.

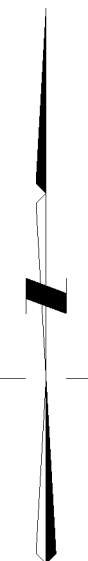
THIS PLAN SHOWS HORIZONTAL GROUND-LEVEL DISTANCES UNLESS OTHERWISE SPECIFIED. TO COMPUTE GRID DISTANCES, MULTIPLY GROUND-LEVEL DISTANCES BY THE AVERAGE COMBINED FACTOR OF 0.9995163 WHICH HAS BEEN DERIVED FROM CONTROL MONUMENT 85H1090.

LEGEND:

SYMBOLS	DESCRIPTION
FOUND	PLACED
▲	CONTROL MONUMENT
■	LEAD PLUG
●	STANDARD IRON POST
○	NON-STANDARD ALUMINUM BOLT
PCL	PARCEL
CF	COMBINED FACTOR
EHPA	ESTIMATED HORIZONTAL POSITIONAL ACCURACY

NOTE: SOME POSTS AND LINES ARE EXAGGERATED FOR CLARITY.

NOTE: THIS PLAN SHOWS ONE OR MORE WITNESS POSTS WHICH ARE NOT SET ON THE TRUE CORNER(S).



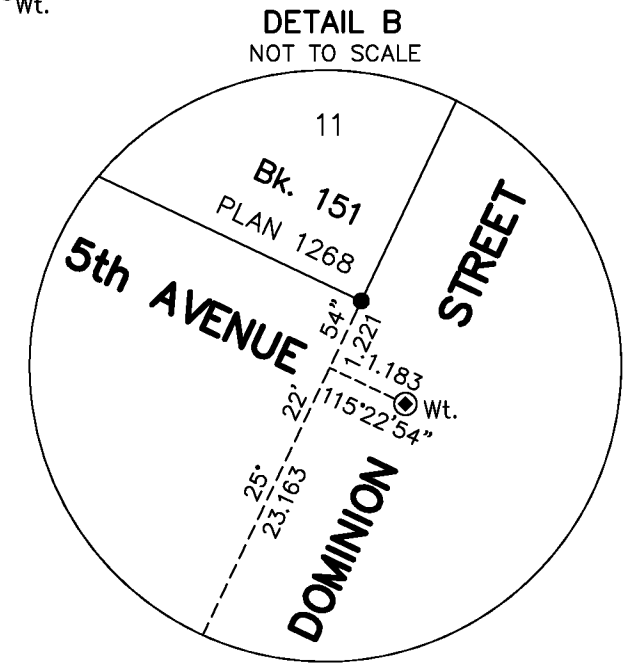
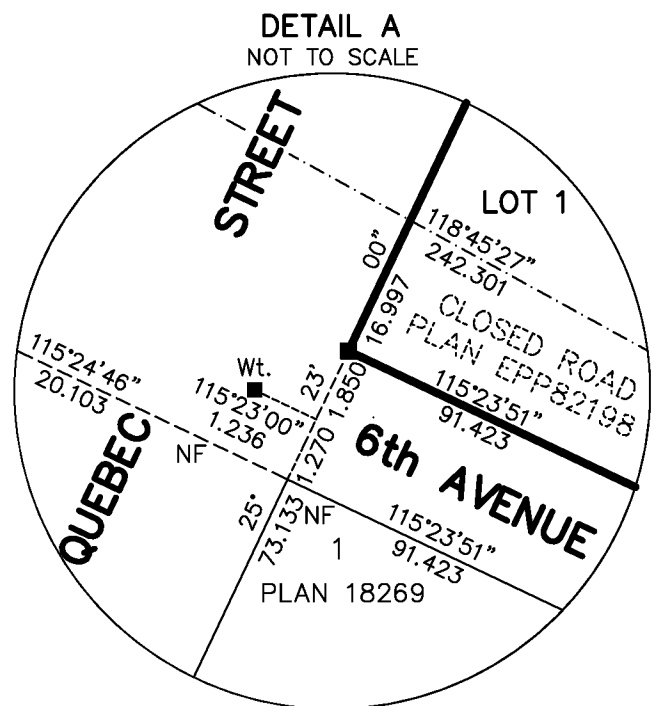
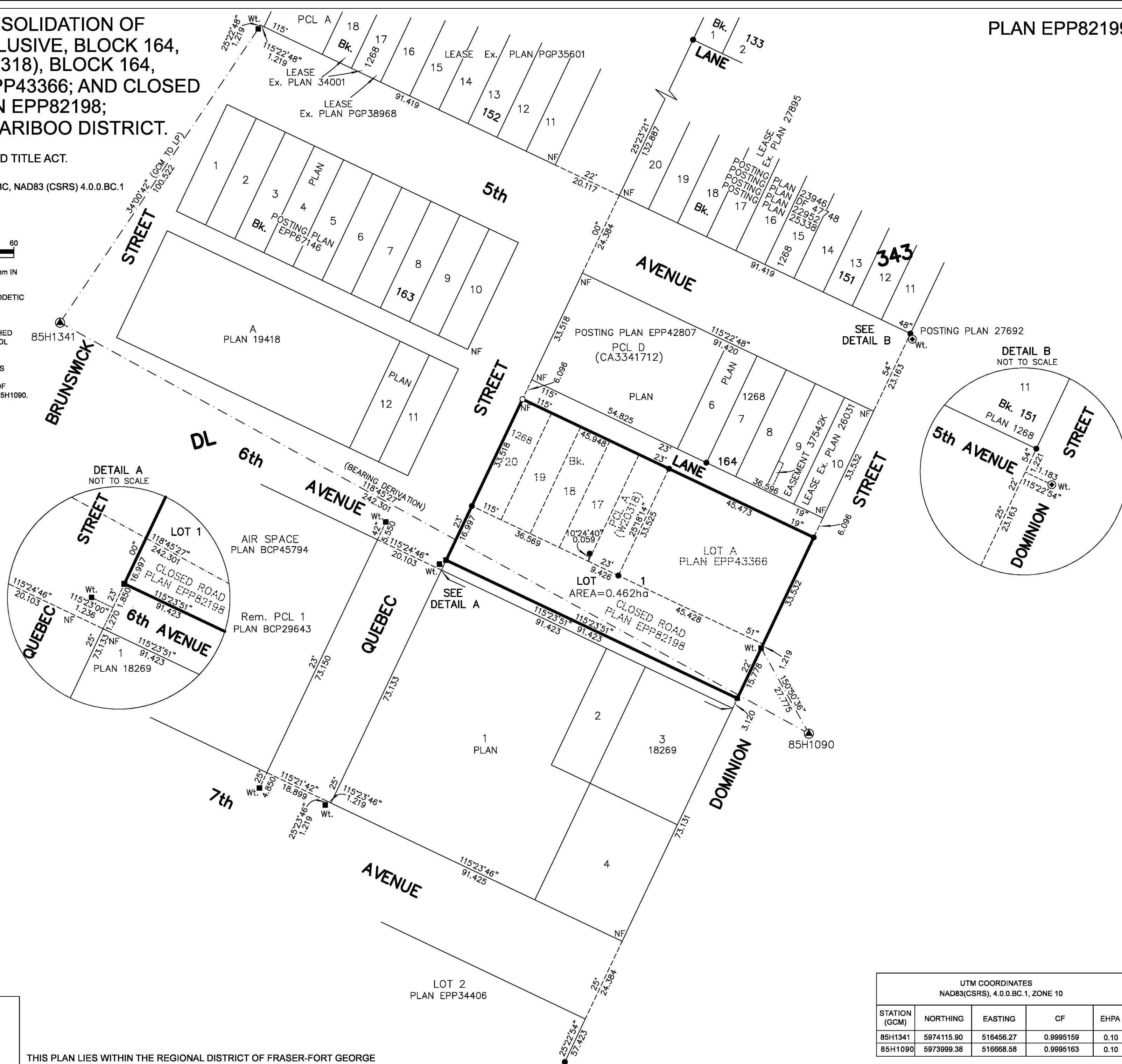
THE FIELD SURVEY REPRESENTED BY THIS PLAN WAS COMPLETED ON THE 3rd DAY OF SEPTEMBER, 2018
DARREN KENT, BCLS 904

HBH FILE No. CPG1801-C



PRINCE GEORGE, BC
PHONE: (250) 640-2287
SMITHERS, BC
PHONE: (250) 847-3808
BCLS@HBHLandSurveying.ca

THIS PLAN LIES WITHIN THE REGIONAL DISTRICT OF FRASER-FORT GEORGE



UTM COORDINATES NAD83(CSRS), 4.0.0.BC.1, ZONE 10				
STATION (GCM)	NORTHING	EASTING	CF	EHPA
85H1341	5974115.90	516456.27	0.9995159	0.10
85H1090	5973999.38	516668.58	0.9995163	0.10