

SUBDIVISION PLAN OF LOT A, PLAN 16658 AND LOT 1, PLAN PGP44935, BOTH IN DISTRICT LOT 954, CARIBOO DISTRICT.

PLAN EPP82193

PURSUANT TO SECTION 67 OF THE LAND TITLE ACT

INTEGRATED SURVEY AREA No. 39 PRINCE GEORGE, BC, NAD83 (CSRS) 4.0.0.BC.1

BCGS 93G.097



THE INTENDED PLOT SIZE OF THIS PLAN IS 560 mm IN WIDTH BY 432 mm IN HEIGHT (C SIZE) WHEN PLOTTED AT A SCALE OF 1:1000.

ALL DISTANCES ARE IN METRES AND DECIMALS THEREOF.

GRID BEARINGS ARE DERIVED FROM DIFFERENTIAL DUAL FREQUENCY GNSS OBSERVATIONS AND ARE REFERRED TO THE CENTRAL MERIDIAN OF UTM ZONE 10.

THE UTM COORDINATES AND ESTIMATED HORIZONTAL POSITIONAL ACCURACY ACHIEVED HAVE BEEN DERIVED FROM MASCOT PUBLISHED COORDINATES AND STANDARD DEVIATIONS FOR GEODETIC CONTROL MONUMENT 85H1280.

THIS PLAN SHOWS HORIZONTAL GROUND-LEVEL DISTANCES UNLESS OTHERWISE SPECIFIED. TO COMPUTE GRID DISTANCES, MULTIPLY GROUND-LEVEL DISTANCES BY THE AVERAGE COMBINED FACTOR OF 0.9995021. THE AVERAGE COMBINED FACTOR HAS BEEN DETERMINED BASED ON AN ELLIPSOIDAL ELEVATION OF 665 METRES.

LEGEND:

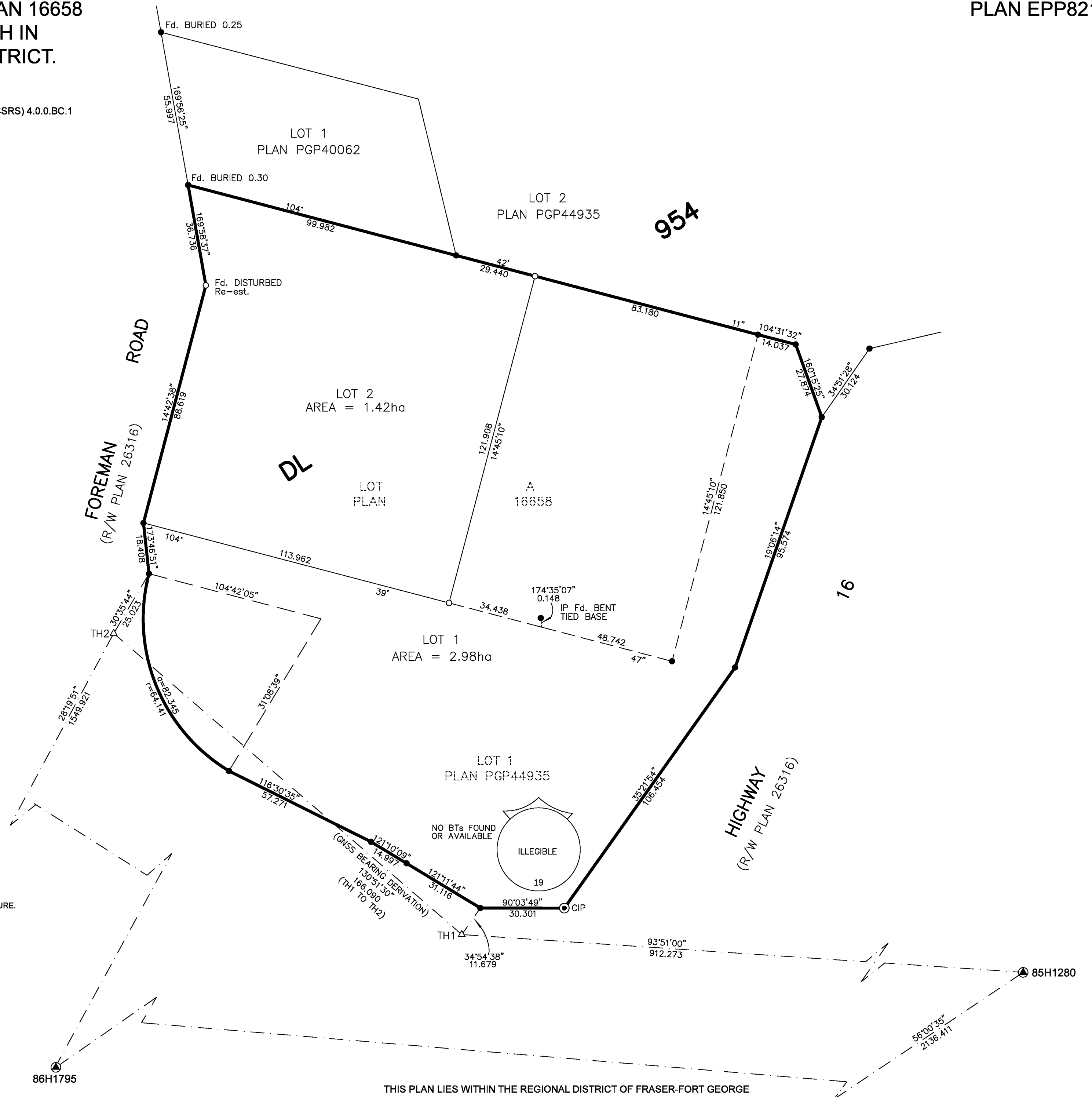
SYMBOLS DESCRIPTION

FOUND PLACED

- CONTROL MONUMENT
- STANDARD CONCRETE POST
- STANDARD IRON POST
- TRAVERSE HUB

NOTE: SOME POSTS AND LINES ARE EXAGGERATED FOR CLARITY.

UTM COORDINATES NAD83(CSRS), 4.0.0.BC.1, ZONE 10				
STATION	NORTHING	EASTING	CSF	EHPA
85H1280	5974693.20	523994.15	0.9995039	0.12
TH1	5974754.43	523084.39	0.9995021	0.12



THIS PLAN LIES WITHIN THE JURISDICTION OF THE APPROVING OFFICER FOR THE MINISTRY OF TRANSPORTATION AND INFRASTRUCTURE.

THIS PLAN LIES WITHIN THE JURISDICTION OF THE APPROVING OFFICER FOR THE CITY OF PRINCE GEORGE.
CPG FILE No: SD100555

THE FIELD SURVEY REPRESENTED BY THIS PLAN WAS COMPLETED ON THE 29th DAY OF MAY, 2018
DARREN KENT, BCLS 904

HBH FILE No. KID1801



PRINCE GEORGE, BC
PHONE: (250) 640-2287
SMITHERS, BC
PHONE: (250) 847-3808
BCLS@HBHLandSurveying.ca

THIS PLAN LIES WITHIN THE REGIONAL DISTRICT OF FRASER-FORT GEORGE