

**SUBDIVISION PLAN OF LOT 1, DISTRICT LOT 1544, PLAN BCP6048, AND PART OF DISTRICT LOT 1544, EXCEPT: FIRSTLY; PART SUBDIVIDED BY PLAN 8840, SECONDLY; PART SUBDIVIDED BY PLAN 9868, THIRDLY; PART SUBDIVIDED BY PLAN 14163, FOURTHLY; PART SUBDIVIDED BY PLAN 15115, FIFTHLY; PART SUBDIVIDED BY PLAN 16904, SIXTHLY; PART SUBDIVIDED BY PLAN BCP6048, ALL IN CARIBOO DISTRICT.**

PURSUANT TO SECTION 67 OF THE LAND TITLE ACT

INTEGRATED SURVEY AREA No. 39 PRINCE GEORGE, BC, NAD83 (CSRS) 4.0.0.BC.1

BCGS 93G.087



THE INTENDED PLOT SIZE OF THIS PLAN IS 864mm IN WIDTH BY 560mm IN HEIGHT (D SIZE) WHEN PLOTTED AT A SCALE OF 1:2000.

ALL DISTANCES ARE IN METRES AND DECIMALS THEREOF.

GRID BEARINGS ARE DERIVED FROM OBSERVATIONS BETWEEN GEODETIC CONTROL MONUMENTS 85H1279 AND 86H1834.

THE UTM COORDINATES AND ESTIMATED HORIZONTAL POSITIONAL ACCURACY ACHIEVED HAVE BEEN DERIVED FROM MASCOT PUBLISHED COORDINATES AND STANDARD DEVIATIONS FOR GEODETIC CONTROL MONUMENT 85H1279.

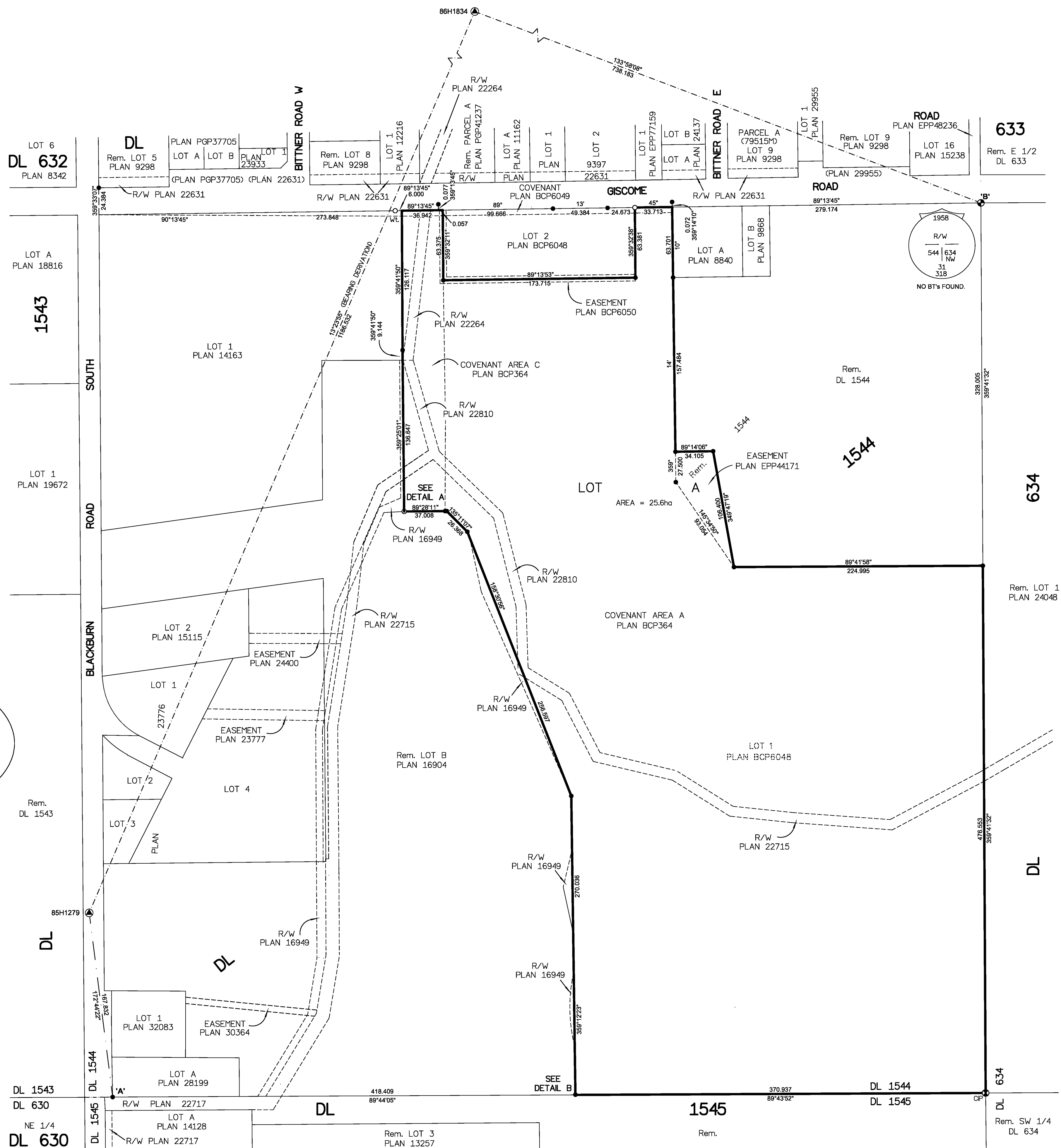
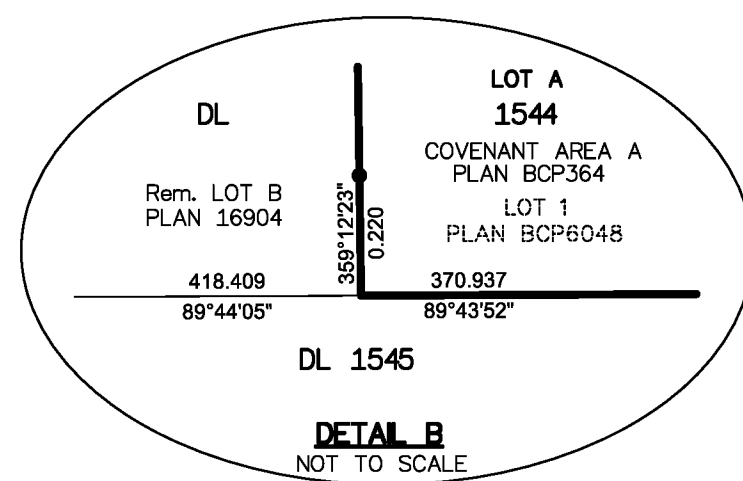
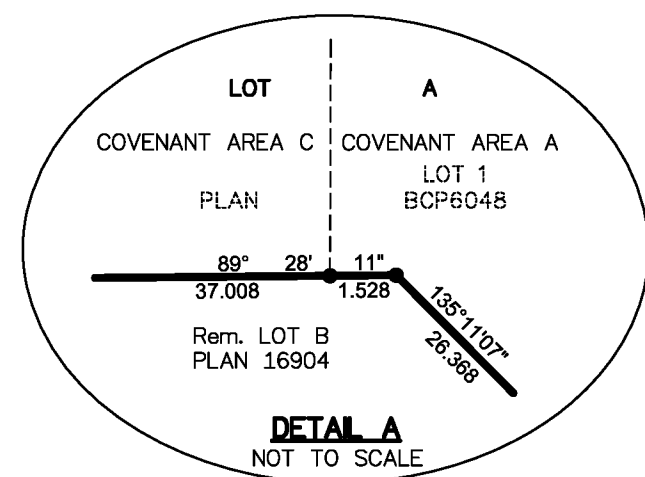
THIS PLAN SHOWS HORIZONTAL GROUND-LEVEL DISTANCES UNLESS OTHERWISE SPECIFIED. TO COMPUTE GRID DISTANCES, MULTIPLY GROUND-LEVEL DISTANCES BY THE AVERAGE COMBINED FACTOR OF 0.9995027 WHICH HAS BEEN DERIVED FROM GEODETIC CONTROL MONUMENT 85H1279.

NOTE: THIS PLAN SHOWS ONE OR MORE WITNESS POSTS WHICH ARE NOT SET ON THE TRUE CORNER(S). SOME POSTS AND LINES ARE EXAGGERATED FOR CLARITY.

**LEGEND**

SYMBOLS	DESCRIPTION
FOUND	PLACED
⊙	CONTROL MONUMENT
⊕	STANDARD CAPPED POST
○	STANDARD IRON POST
CSF	COMBINED SCALE FACTOR
EHPA	ESTIMATED HORIZONTAL POSITIONAL ACCURACY

GEOREFERENCING POSITIONS				
UTM COORDINATES, ZONE 10, NAD 83 (CSRS), 4.0.0.BC.1				
STATION	NORTHING	EASTING	EHPA	CSF
Fd. IP 'A'	5971463.42	523611.28	0.10	0.9995027
Fd. CP 'B'	5972271.25	524395.81	0.10	0.9995027



THIS PLAN LIES WITHIN THE JURISDICTION OF THE APPROVING OFFICER FOR THE CITY OF PRINCE GEORGE  
CPG FILE NO. SD100563

THE FIELD SURVEY REPRESENTED BY THIS PLAN WAS COMPLETED ON THE 18th DAY OF APRIL, 2018  
SHAUNA C. GOERTZEN, BCLS 798

THIS PLAN LIES WITHIN THE REGIONAL DISTRICT OF FRASER-FORT GEORGE.

Filed PG EPP82168 EPP82168 152-477-9245 RC/V/D:2019-01-11 RQST:2019-01-23 03:02 Prince George, City of