

REFERENCE PLAN OF CONSOLIDATION OF
 LOTS 1 THROUGH 4, INCLUSIVE, BLOCK 169, PLAN 1268;
 LOTS 9 THROUGH 14, INCLUSIVE, BLOCK 166, PLAN 1268;
 PARCEL 1 (PK7819), BLOCK 169, PLAN 1268;
 LOT A, PLAN 9117; AND CLOSED ROAD AND LANE,
 AS SHOWN ON PLAN EPP81919;
 ALL IN DISTRICT LOT 343, CARIBOO DISTRICT.

PURSUANT TO SECTION 100(1)(b) OF THE LAND TITLE ACT.

INTEGRATED SURVEY AREA No. 39 PRINCE GEORGE, BC, NAD83 (CSRS) 4.0.0.BC.1

BCGS 93G.097



THE INTENDED PLOT SIZE OF THIS PLAN IS 854mm IN WIDTH BY 560mm IN HEIGHT (D SIZE) WHEN PLOTTED AT A SCALE OF 1:1000.

ALL DISTANCES ARE IN METRES AND DECIMALS THEREOF.

GRID BEARINGS ARE DERIVED FROM OBSERVATIONS BETWEEN GEODETIC CONTROL MONUMENTS 85H1090 AND 85H1341.

THE UTM COORDINATES AND ESTIMATED HORIZONTAL POSITIONAL ACCURACY ACHIEVED HAVE BEEN DERIVED FROM MASCOT PUBLISHED COORDINATES AND STANDARD DEVIATIONS FOR GEODETIC CONTROL MONUMENT 85H1090.

THIS PLAN SHOWS HORIZONTAL GROUND-LEVEL DISTANCES UNLESS OTHERWISE SPECIFIED. TO COMPUTE GRID DISTANCES, MULTIPLY GROUND-LEVEL DISTANCES BY THE AVERAGE COMBINED FACTOR OF 0.9995163 WHICH HAS BEEN DERIVED FROM GEODETIC CONTROL MONUMENT 85H1090.

NOTE:
 THIS PLAN SHOWS ONE OR MORE WITNESS POSTS WHICH ARE NOT SET ON THE TRUE CORNER(S).
 SOME POSTS AND LINES ARE EXAGGERATED FOR CLARITY.

LEGEND

SYMBOLS	DESCRIPTION
FOUND	PLACED
●	○
■	□
AB	ALUMINUM BOLT
AMD	AMENDED
UTP	UNSUITABLE TO POST DUE TO CONSTRUCTION
CSF	COMBINED SCALE FACTOR
EHPA	ESTIMATED HORIZONTAL POSITIONAL ACCURACY

GEOREFERENCING POSITIONS				
UTM COORDINATES, ZONE 10, NAD 83 (CSRS), 4.0.0.BC.1				
STATION	NORTHING	EASTING	EHPA	CSF
Fd. IP 'A'	5973737.12	516476.85	0.10	0.9995163
Fd. IP 'B'	5973983.20	516696.56	0.10	0.9995163

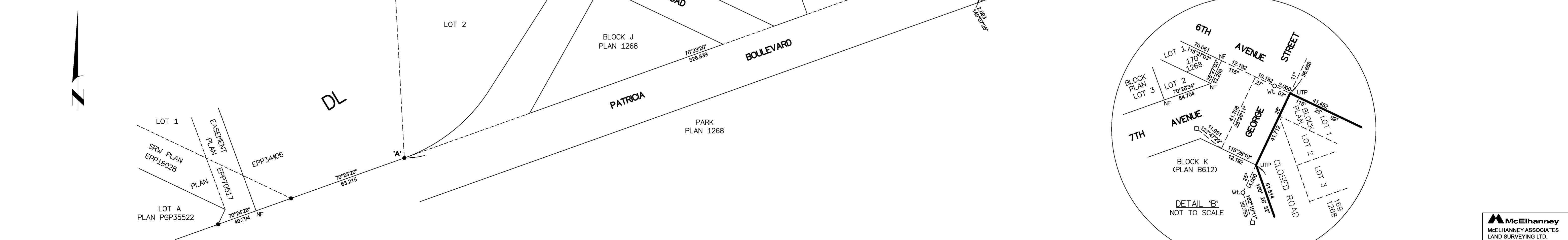
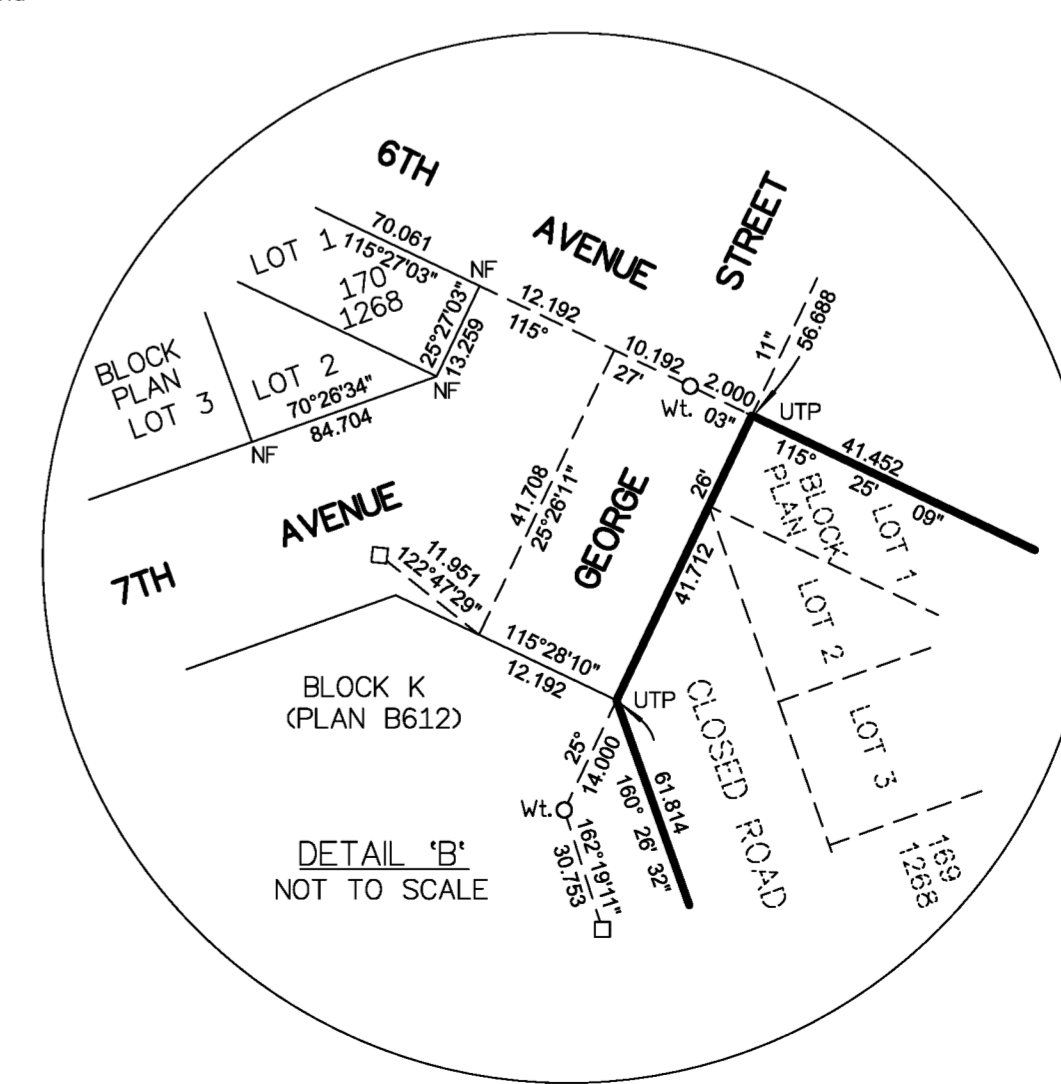
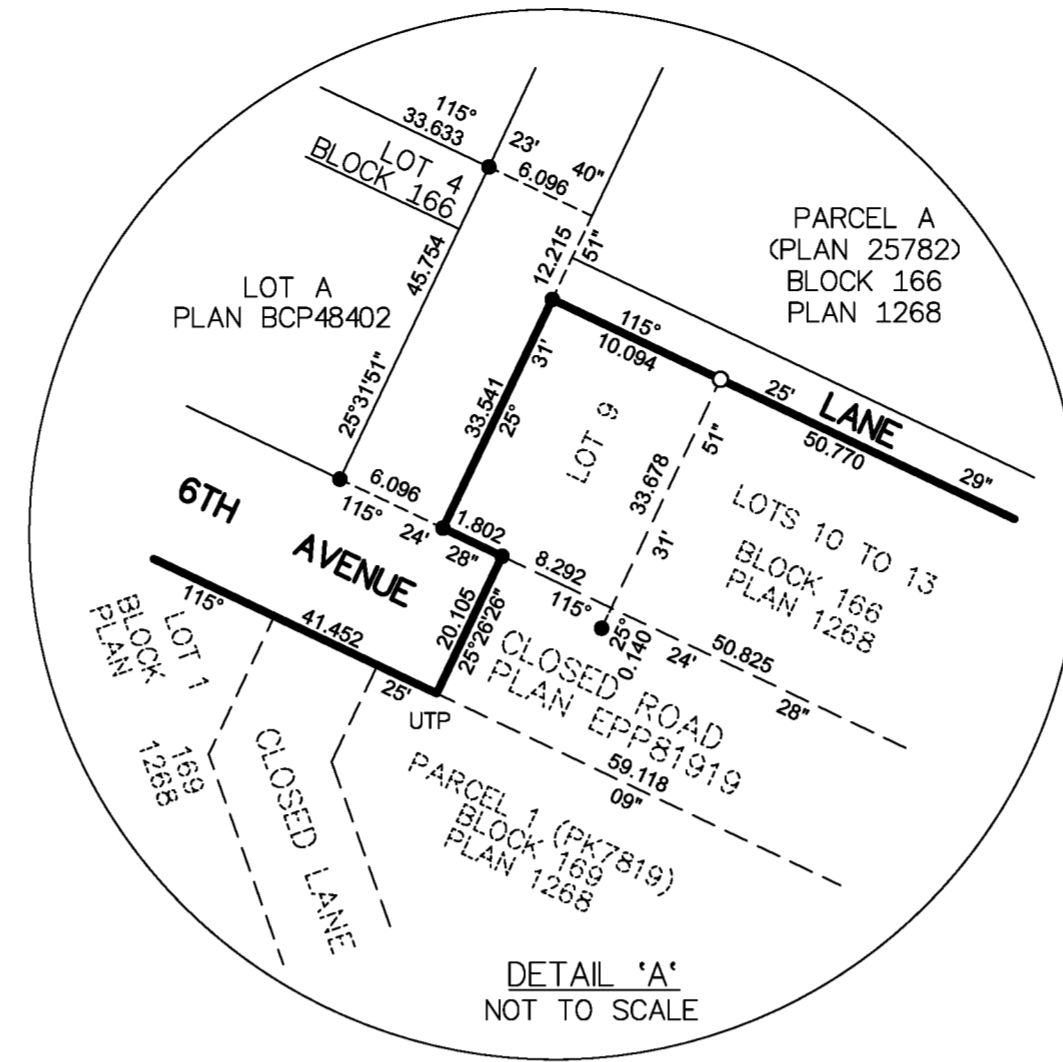
85H1341

85H1090

DL

'A'

'B'



THE FIELD SURVEY REPRESENTED BY THIS PLAN WAS COMPLETED ON THE 2nd DAY OF AUGUST, 2019
 SHAUNA C. GOERTZ, BCLS 798

THIS PLAN LIES WITHIN THE REGIONAL DISTRICT OF FRASER-FORT GEORGE.

McElhanney
 McELHANNEY ASSOCIATES
 LAND SURVEYING LTD.
 Suite 12
 556 North Nechako Road
 Prince George BC
 Canada V2K 1A1
 Tel 250 561 2229
 File No. 2341-8845-CON