

REFERENCE PLAN TO ACCOMPANY BY-LAW No. 8938, 2018, (PRINCE GEORGE)  
 CLOSING PORTIONS OF ROAD AND LANE SHOWN DEDICATED ON  
 PLAN 1268, DISTRICT LOT 343, CARIBOO DISTRICT.

PLAN EPP81919

PURSUANT TO SECTION 120 OF THE LAND TITLE ACT AND  
 SECTION 40 OF THE COMMUNITY CHARTER.  
 INTEGRATED SURVEY AREA No. 39 PRINCE GEORGE, BC, NAD83 (CSRS) 4.0.0.BC.1  
 BCGS 93G.097



THE INTENDED PLOT SIZE OF THIS PLAN IS 864mm IN WIDTH BY 560mm IN  
 HEIGHT (D SIZE) WHEN PLOTTED AT A SCALE OF 1:1000.

ALL DISTANCES ARE IN METRES AND DECIMALS THEREOF.

GRID BEARINGS ARE DERIVED FROM OBSERVATIONS BETWEEN GEODETIC  
 CONTROL MONUMENTS 85H1090 AND 85H1341.

THE UTM COORDINATES AND ESTIMATED HORIZONTAL POSITIONAL  
 ACCURACY ACHIEVED HAVE BEEN DERIVED FROM MASCOT PUBLISHED  
 COORDINATES AND STANDARD DEVIATIONS FOR GEODETIC CONTROL  
 MONUMENT 85H1090.

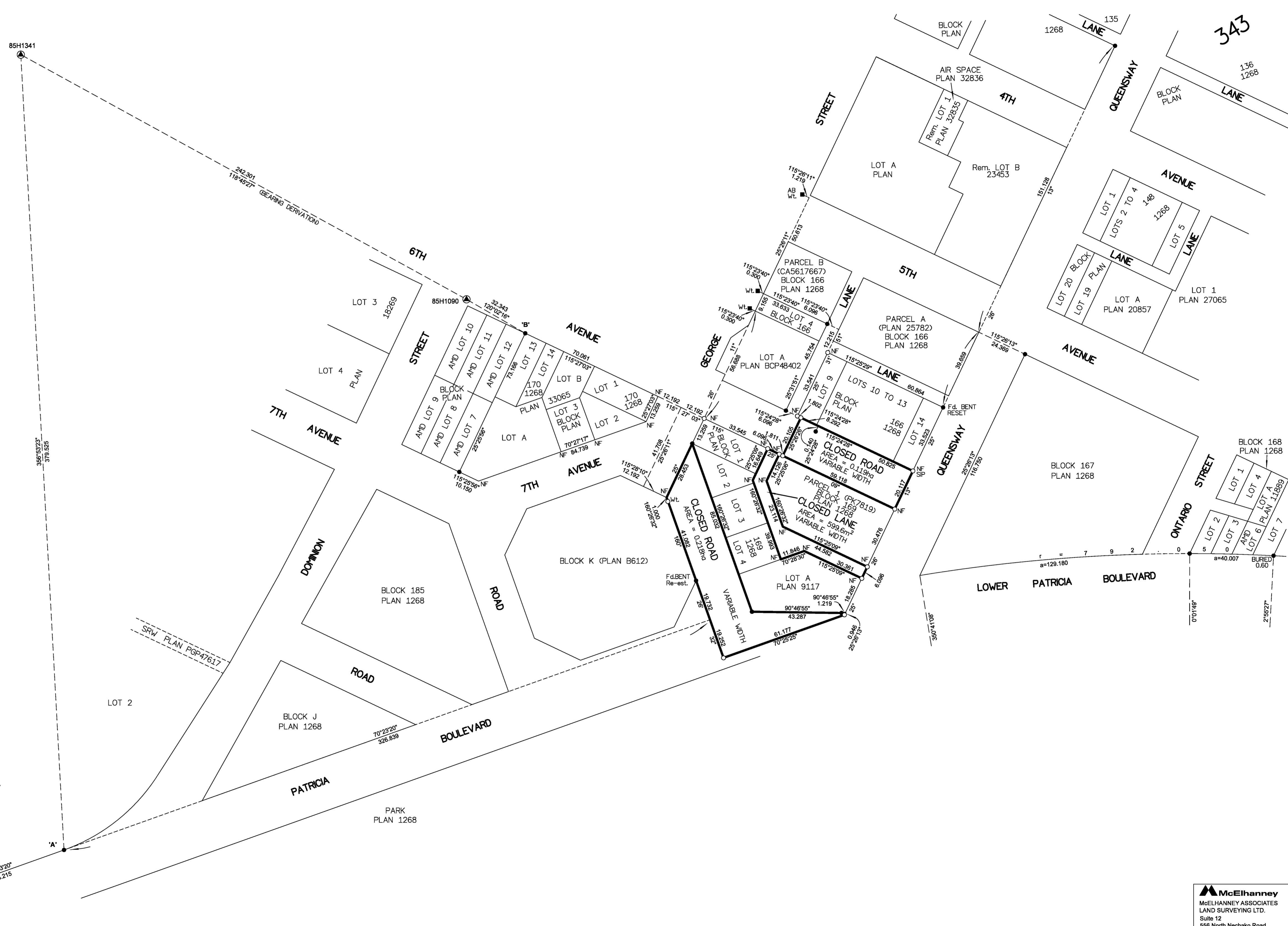
THIS PLAN SHOWS HORIZONTAL GROUND-LEVEL DISTANCES UNLESS  
 OTHERWISE SPECIFIED. TO COMPUTE GRID DISTANCES, MULTIPLY  
 GROUND-LEVEL DISTANCES BY THE AVERAGE COMBINED FACTOR OF  
 0.9995183 WHICH HAS BEEN DERIVED FROM GEODETIC CONTROL MONUMENT  
 85H1090.

NOTE:  
 THIS PLAN SHOWS ONE OR MORE WITNESS POSTS  
 WHICH ARE NOT SET ON THE TRUE CORNER(S).  
 SOME POSTS AND LINES ARE EXAGGERATED FOR CLARITY.

LEGEND

SYMBOLS	DESCRIPTION
●	CONTROL MONUMENT
○	STANDARD IRON POST
■	LEAD PLUG
AB	ALUMINUM BOLT
SIP	SHORT IRON POST
AMD	AMENDED
CSF	COMBINED SCALE FACTOR
EHPA	ESTIMATED HORIZONTAL POSITIONAL ACCURACY

GEOREFERENCING POSITIONS				
UTM COORDINATES, ZONE 10, NAD 83 (CSRS), 4.0.0.BC.1				
STATION	NORTHING	EASTING	EHPA	CSF
Fd. IP 'A'	5973737.12	516476.85	0.10	0.9995183
Fd. IP 'B'	5973883.20	516696.56	0.10	0.9995183



THE FIELD SURVEY REPRESENTED BY THIS PLAN WAS COMPLETED  
 ON THE 30th DAY OF APRIL, 2018  
 SHAUNA C. GOERTZEN, BCLS 798

THIS PLAN LIES WITHIN THE REGIONAL DISTRICT OF FRASER-FORT GEORGE.

**McElhanney**  
 McELHANNEY ASSOCIATES  
 LAND SURVEYING LTD.  
 Suite 12  
 656 North Nechako Road  
 Prince George BC  
 Canada V2K 1A1  
 Tel 250 561 2229  
 File No. 2341-6845-RC

Filed PG EPP81919 EPP81919-152-531-9224 RCVD:2018-08-17 ROST:2018-08-30 03:05 Prince George, City of