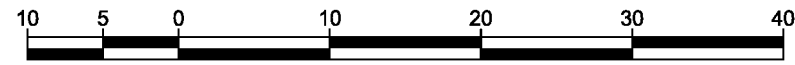


**REFERENCE PLAN OF PART OF LOT 1 AND LOT 20,  
BLOCK 146, DISTRICT LOT 343, CARIBOO  
DISTRICT, PLAN 1268**

PURSUANT TO SECTION 107 OF THE LAND TITLE ACT.  
FOR ROAD DEDICATION

INTEGRATED SURVEY AREA No. 39 PRINCE GEORGE, BC, NAD83 (CSRS) 4.0.0.BC.1  
BCGS 93G.097



THE INTENDED PLOT SIZE OF THIS PLAN IS 560mm IN WIDTH BY 432mm IN HEIGHT (C SIZE) WHEN PLOTTED AT A SCALE OF 1:500.

ALL DISTANCES ARE IN METRES AND DECIMALS THEREOF.

GRID BEARINGS ARE DERIVED FROM OBSERVATIONS BETWEEN GEODETIC CONTROL MONUMENTS 85H1289 AND 85H12520.

THE UTM COORDINATES AND ESTIMATED HORIZONTAL POSITIONAL ACCURACY ACHIEVED HAVE BEEN DERIVED FROM MASCOT PUBLISHED COORDINATES AND STANDARD DEVIATIONS FOR GEODETIC CONTROL MONUMENTS 85H1289 AND 85H12520.

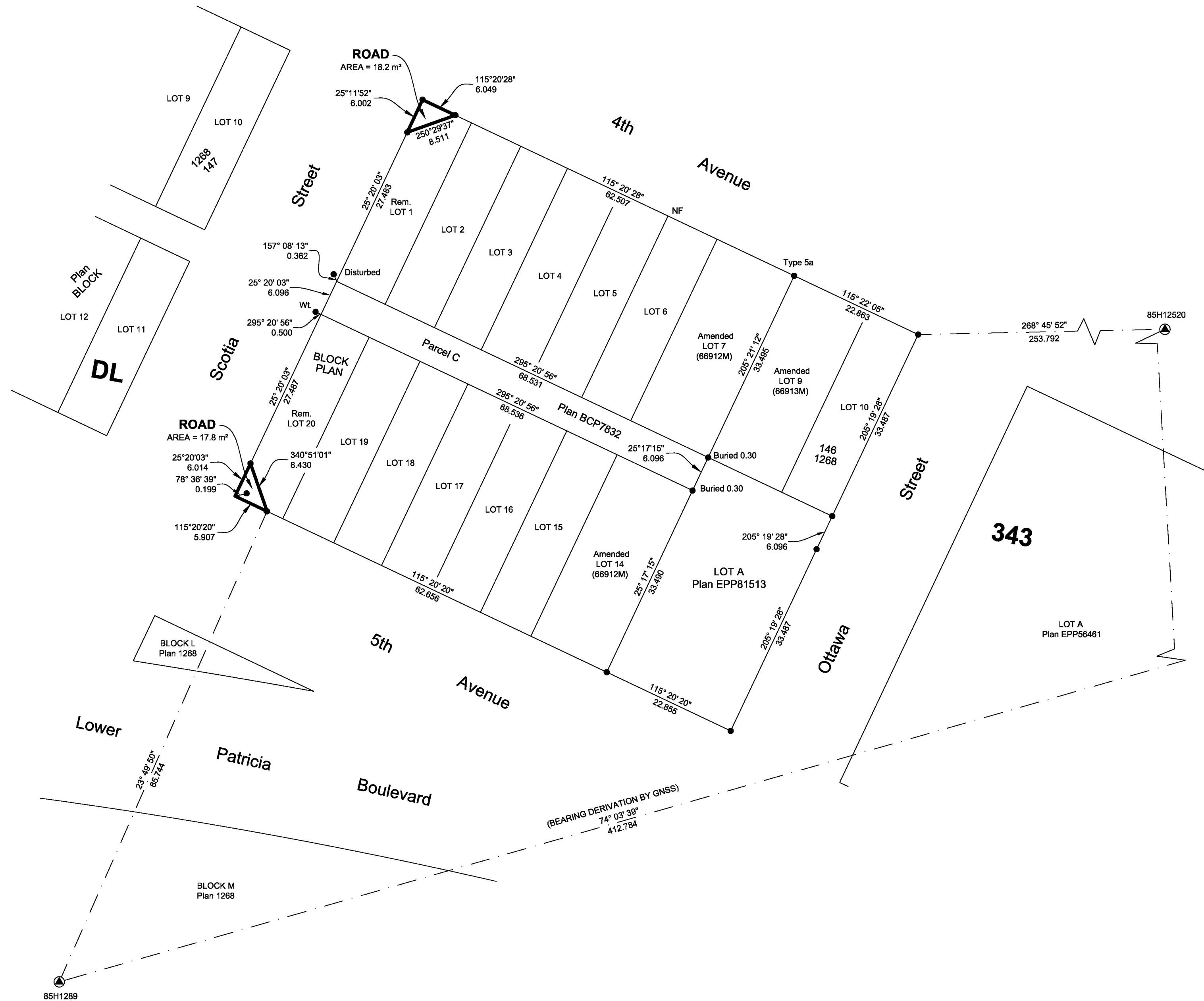
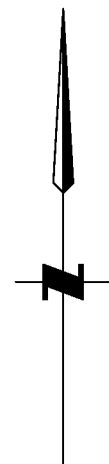
THIS PLAN SHOWS HORIZONTAL GROUND-LEVEL DISTANCES UNLESS OTHERWISE SPECIFIED. TO COMPUTE GRID DISTANCES, MULTIPLY GROUND-LEVEL DISTANCES BY THE AVERAGE COMBINED FACTOR OF 0.9995152 WHICH HAS BEEN DERIVED FROM CONTROL MONUMENT 85H1289.

NOTE:  
THIS PLAN SHOWS ONE OR MORE WITNESS POSTS WHICH ARE NOT SET ON THE TRUE CORNER(S).  
SOME POSTS ARE EXAGGERATED FOR CLARITY.

**LEGEND**

SYMBOLS	DESCRIPTION
FOUND PLACED	
	CONTROL MONUMENT
	STANDARD IRON POST
	COMBINED SCALE FACTOR
	ESTIMATED HORIZONTAL POSITIONAL ACCURACY

GEOREFERENCING POSITIONS UTM COORDINATES, ZONE 10, NAD 83 (CSRS), 4.0.0.BC.1				
STATION	NORTHING	EASTING	EHPA	CSF
85H1289	5973818.78	517117.25	0.10	0.9995152
85H12520	5973932.09	517513.97	0.10	0.9995169



CPG FILE NO.: RES1372

THE FIELD SURVEY REPRESENTED BY THIS PLAN WAS COMPLETED ON THE 9TH DAY OF MARCH, 2018

ALBERT KOEHLER, BCLS 974

THIS PLAN LIES WITHIN THE REGIONAL DISTRICT OF FRASER-FORT GEORGE.

FILE: 18012-REF  
**KOEHLER LAND SURVEYING INC.**  
1898 LYON STREET SOUTH  
PRINCE GEORGE, BC V2N 1T3  
TEL: (250) 614-9703