

EXPLANATORY PLAN OF EASEMENT OVER PART OF LOT A, DISTRICT LOTS 8171 AND 8172, CARIBOO DISTRICT, PLAN EPP66819.

PLAN EPP81592

PURSUANT TO SECTION 99(1)(e) OF THE LAND TITLE ACT.
FOR EASEMENT PURPOSES

INTEGRATED SURVEY AREA No. 39 PRINCE GEORGE, BC, NAD83 (CSRS) 4.0.0.BC.1

BCGS 93G.087



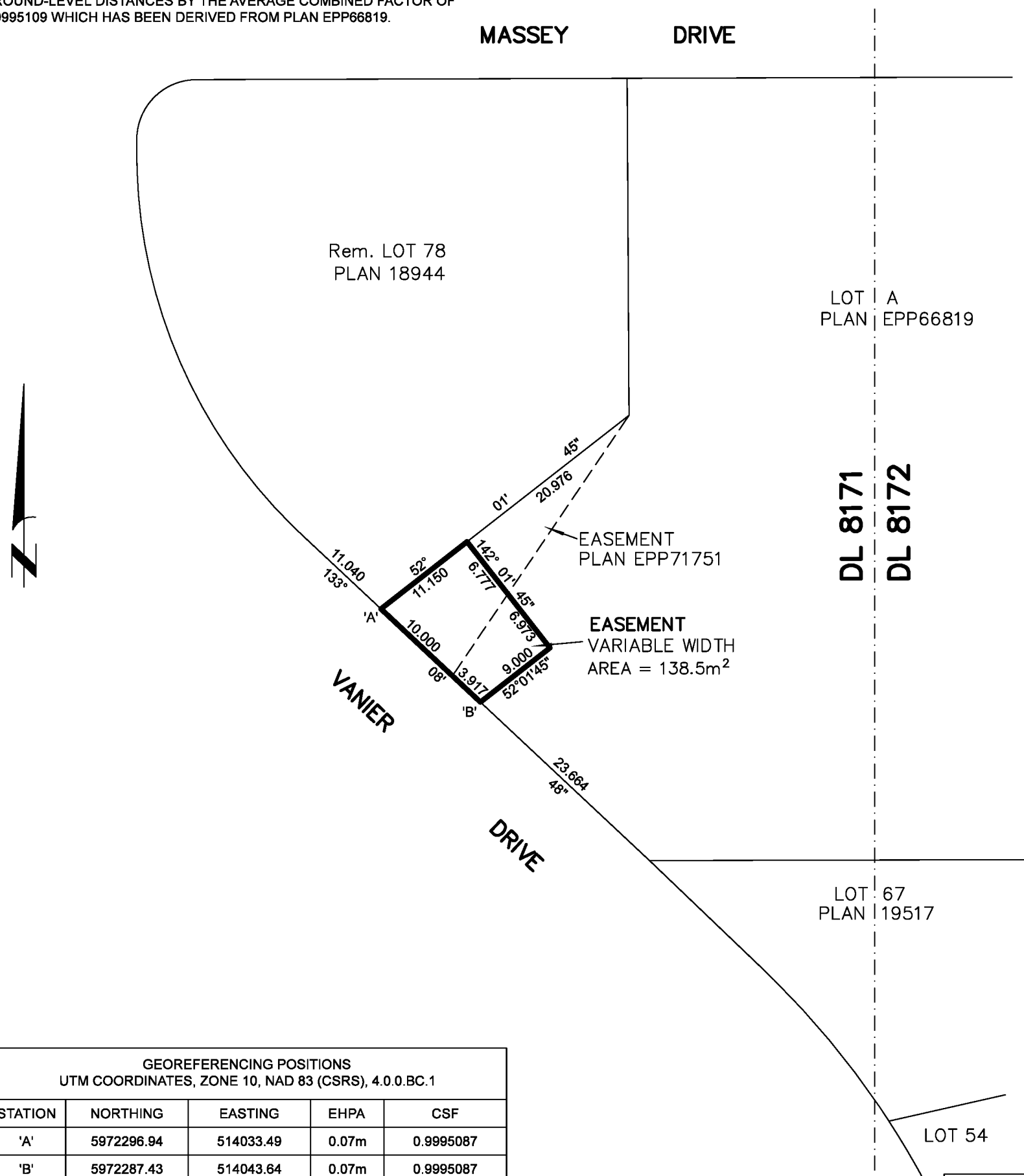
THE INTENDED PLOT SIZE OF THIS PLAN IS 280mm IN WIDTH BY 432mm IN HEIGHT (B SIZE) WHEN PLOTTED AT A SCALE OF 1:500.

ALL DISTANCES ARE IN METRES AND DECIMALS THEREOF.

GRID BEARINGS ARE DERIVED FROM PLAN EPP66819.

THE UTM COORDINATES AND ESTIMATED HORIZONTAL POSITIONAL ACCURACY ACHIEVED HAVE BEEN DERIVED FROM PLAN EPP66819.

THIS PLAN SHOWS HORIZONTAL GROUND-LEVEL DISTANCES UNLESS OTHERWISE SPECIFIED. TO COMPUTE GRID DISTANCES, MULTIPLY GROUND-LEVEL DISTANCES BY THE AVERAGE COMBINED FACTOR OF 0.9995109 WHICH HAS BEEN DERIVED FROM PLAN EPP66819.



GEOREFERENCING POSITIONS UTM COORDINATES, ZONE 10, NAD 83 (CSRS), 4.0.0.BC.1				
STATION	NORTHING	EASTING	EHPA	CSF
'A'	5972296.94	514033.49	0.07m	0.9995087
'B'	5972287.43	514043.64	0.07m	0.9995087

THIS PLAN IS BASED ON THE FOLLOWING
LAND TITLE AND SURVEY AUTHORITY OF BC RECORDS:
EPP66819.

SHAUNA C. GOERTZEN, BCLS 798
ON THE 9th DAY OF APRIL, 2018.

THIS PLAN LIES WITHIN THE REGIONAL DISTRICT OF FRASER-FORT GEORGE.

McElhanney
McELHANNEY ASSOCIATES
LAND SURVEYING LTD.
Suite 12
556 North Nechako Road
Prince George BC
Canada V2K 1A1
Tel 250 561 2229

File No. 2341-6494-E2