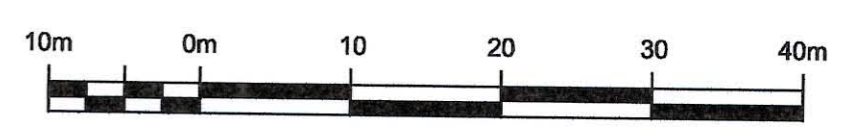


PLAN EPP8126

SUBDIVISION PLAN OF LOTS 20, 21 AND 22, BLOCK 5, DISTRICT LOT 937, CARIBOO DISTRICT, PLAN 752

BCGS 93G.097



All distances are in metres

The intended plot size of this plan is 560mm in width by 432 mm in height when plotted at scale 1:500 (use C size sheet)

LEGEND

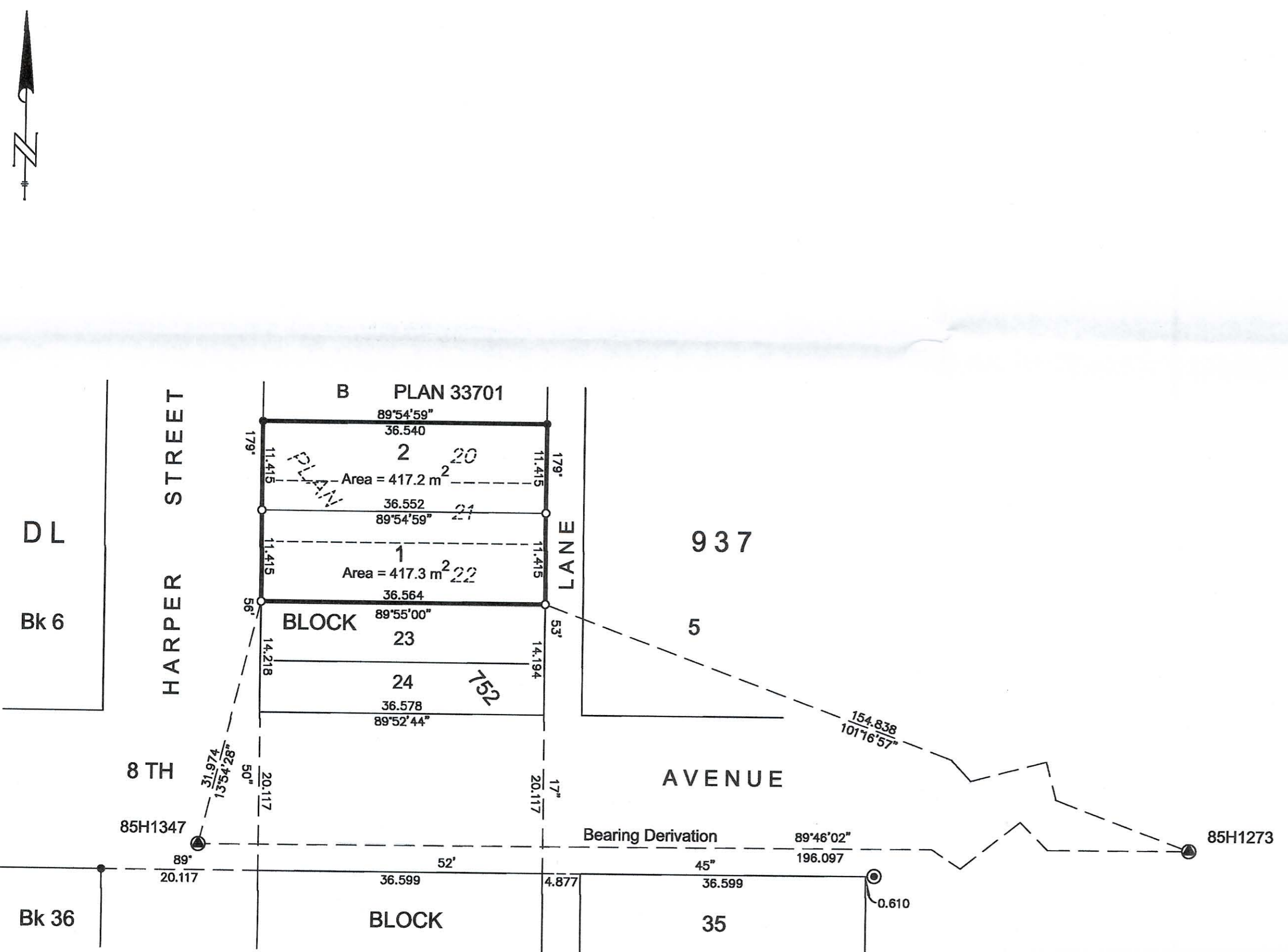
Grid bearings are derived from observations between control monuments 85H1347 and 85H1273 Integrated Survey Area Number 39, City of Prince George, NAD 83(CSRS)

This plan shows ground-level measured distances Prior to computation of UTM coordinates multiply by combined factor of 0.9995115

- Standard Iron Post Placed
- Standard Iron Post Found
- ⊙ Standard Concrete Post Found
- ⊗ Control Monument

This plan lies within the Regional District of Fraser - Fort George

The field survey represented by this plan was completed by Richard E. Gook, BCLS on the 10th day of June, 2010



This plan lies within the jurisdiction of the Approving Officer for the City of Prince George
File No. SD100320

R.E. GOOK & ASSOCIATES
B.C. & CANADA LANDS SURVEYORS
886 VANCOUVER STREET
PRINCE GEORGE, BC, V2L 2P5
PHONE: 250-564-4242
FAX: 250-564-5343
FILE:10-0634PG
regook@northernsurveys.com